



BEAULIEU RIVER

BUCKLER'S HARD YACHT HARBOUR

The natural haven where the New Forest meets the Solent



WINNER 2018/19
Coastal

2020 TIDE TIMES & INFORMATION



JEREMY ROGERS

Boat Builders & Composite Specialists



The craftsmanship's ours. The adventure's all yours.

We are well known as the home of Contessa yachts, but whatever kind of boat you have, our yard in the Lymington Yacht Haven is the perfect place for refurbishment. We carry out all shipwright work.

Complete interior refits • Engines • Electronics • Bespoke composite projects

Come and talk to our friendly and expert team about your next project.

jeremyrogers.co.uk +44(0)1590 646780 mail@jeremyrogers.co.uk

WELCOME TO THE BEAULIEU RIVER & BUCKLER'S HARD YACHT HARBOUR



Welcome to the Beaulieu River, which forms the south eastern edge of the Beaulieu Estate and is one of the few privately-owned estuaries in the world.

The river has been in the custodianship of my family since 1538, when Henry VIII closed Beaulieu Abbey and sold its lands to my ancestor Thomas Wriothesley. The monks had settled at Beaulieu partly because the river ensured easy transit between the Abbey and points further afield, and so it remains today.

The estuary is an ideal place from which to sail in the Solent or visit for a short stay and, if you seek the pleasures of the countryside, the Beaulieu Estate and New Forest National Park are on your doorstep.

The next two years will be significant in the development of the yacht harbour as we are investing in a major reconfiguration of the marina. By 2021, we will have a greater number of walk-ashore moorings, more spaces for larger vessels and other improved facilities.

Mindful that the natural beauty of the river is one of the reasons people choose to bring their boat to Beaulieu, we will be taking great care to ensure that the look and feel of the yacht harbour remain the same and that the surrounding environment and its wildlife remain protected.

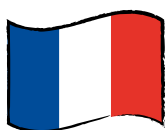
Finally, my thanks to those who voted us the Yacht Harbour Association's Coastal Marina of the Year 2019 (for under 250 berths). It is really encouraging for the river staff to know they're doing a good job; the award gives them quite an incentive to go on achieving the same high standards in the year ahead.



Montagu of Beaulieu



BIENVENUE / WELKOM / WILLKOMMEN



**Bienvenue au port de
plaisance de Buckler's
Hard, à Beaulieu River.**

N'hésitez pas à nous contacter si vous avez besoin d'aide. Des informations plus détaillées en français vous attendent sur notre site Internet. Nous vous souhaitons un agréable séjour.



**Welkom bij de
jachthaven Buckler's
Hard in Beaulieu River.**

Neem contact met ons op als u hulp nodig hebt. Er is meer informatie in het Nederlands beschikbaar op onze website. We hopen dat u van uw verblijf bij ons geniet.



**Willkommen zu Buckler's
Hard Yacht Harbour am
Beaulieu River.**

Wenn Sie unsere Unterstützung benötigen, helfen wir Ihnen gerne weiter. Weitere Informationen auf Deutsch finden Sie auf unserer Website. Wir hoffen, dass Sie Ihren Aufenthalt bei uns genießen.

MEET THE TEAM



We pride ourselves on providing a professional and friendly service to all visitors, with a personal touch that is sometimes missing from larger marinas. Whether you're here for a few hours, a day or longer, please let us know if we can help with anything.

Wendy Stowe
Harbour Master



Buckler's Hard Yacht Harbour | Beaulieu | Hampshire | SO42 7XB

01590 616200 | harbour.office@beaulieu.co.uk | beaulieuriver.co.uk

VHF Channel 68 "Beaulieu River Radio"



YACHT HARBOUR REDEVELOPMENT

We are undertaking a major redevelopment to reconfigure and extend the marina while preserving its unique character.

Since it opened in 1971, the Buckler's Hard Yacht Harbour has remained largely unaltered. With the changing nature of boating, we are now investing in a major remodelling of the marina to better meet customer needs, improve facilities for visiting vessels and offer a greater number of walk-ashore berths.

The £2m project is being carried out in two off-season phases, with the first tranche of new marina berths being available from March 2020. Work on the second phase will begin in October 2020, with the extended marina providing an extra 66 berths and additional large moorings by March 2021.

The Beaulieu Estate is working with agencies including Natural England and the Environment Agency to continue to protect the river habitat and its species. Specialist marina consultancy Marina Projects, based in Gosport, has been appointed to manage the project and the work is being carried out by Fareham-based Walcon Marine. The plans have been approved by the Marine Management Organisation and New Forest National Park Authority.





New Berth and Mooring Configuration

Berth location/type	Existing	Planned
Marina	123	182
Walk Ashore Visitor	8	46
River Pontoons (Residents)	18	18
River Pontoons (Visitors)	20	0
Fore & Aft Moorings	15	15
Trot Moorings	10	0
Swinging Moorings	4	3
Total	198	264

Join us

We're looking forward to welcoming new and existing visitors in 2020 and are already taking rally bookings for our improved capacity.

If you're considering joining us permanently, a small deposit will secure you a berth or mooring for 2020 or 2021.

To find out more, chat to our team, see beaulieuriver.co.uk, email harbour.office@beaulieu.co.uk or call 01590 616200.

Follow the redevelopment

Sign up to our newsletter at beaulieuriver.co.uk or follow us on social media for the latest news and updates.





Sole appointed Yacht Brokers to the Beaulieu River

Thinking of selling your boat? Please pop in to the BH Boat Sales cabin to discuss. A friendly and professional service awaits.

Buckler's Hard Yacht Harbour, Beaulieu, Hampshire SO42 7XB

01590 616316 sales@bhboatsales.com

MY MARINE FINISHER

MAINTAIN & RESTORE
WOODEN & GRP BOATS
HIGH QUALITY FINISH



PAINTING
VALETING
ANTIFOUL

MONTHLY CARE PACKAGE
PRE SALES SCRUB
FRIENDLY SERVICE

VARNISHING
POLISHING
GRP REPAIR



mymarinefinisher@outlook.com

Matthew Young 07766-704659 also available on whatsapp



BY BOAT

The Beaulieu River is centrally located on the Solent. When approaching from the east, keep the lit south cardinal to starboard off Stone Point and steer to the vicinity of a lit, yellow special buoy close to the bearing to run in on. The bearing to run in on is 324° guided by the transit marks, the front mark is port post No. 2 and the back mark is Lepe House.

The Buckler's Hard Yacht Harbour is a pleasant 3.5 nautical mile cruise upstream. Please report to the Harbour Master's Office on arrival using VHF channel 68 and call sign **Beaulieu River Radio**.

BY CAR

We are 14 miles from the M27 with easy access to the main south coast cities, the M3 and London. There is ample parking for customers. Find us via satnav using SO42 7XB and enjoy your journey through the New Forest.

BY TRAIN

The closest main line railway station is eight miles away in Brockenhurst, with a regular service running between London Waterloo and Weymouth. A taxi from Brockenhurst to Buckler's Hard Yacht Harbour will take approximately 20 minutes.




SAILING DISTANCES:

Cowes.....	2.6 Nm
Lymington.....	6 Nm
Hamble.....	5.5 Nm
Portsmouth.....	10 Nm
Chichester	18 Nm
Poole.....	25 Nm
Weymouth.....	45 Nm

LOCAL TAXI SERVICES

Lyndhurst Taxis.....	07708 866844
Marchwood Motorways..	02380 842929
Harvey's Taxi.....	07770 722522
Mike's Taxis.....	07525 864588



-  Portable Ladder
-  Fixed Ladder
-  Emergency Point
(Fire Extinguisher & First Aid Kit)

MARINA LAYOUT & FACILITIES

Buckler's Hard Yacht Harbour holds The Yacht Harbour Association's five Gold Anchor award for its facilities and customer service.

Harbour Master's Office

Please pop in or contact us and we will be happy to help. Open from 8am, 7 days a week.

01590 616200 | harbour.office@beaulieu.co.uk

A Lavatories, Showers and Launderette

Recently refurbished. Open at all times for use by berth holders & visitors. Includes a fully equipped coin operated launderette. Facilities for disabled visitors are also available.

B Chandlery & Groceries

Open every day, stocking a good range of chandlery items and bottled gas. The chandlery also stocks a small selection of grocery items including fresh milk, bread, newspapers (weekends only), confectionery and ice.

01590 616200 | chandlery@beaulieu.co.uk

C Rubbish Disposal

Skips and recycling bins are located within the main refuse compound in the boatyard.

D BH Boat Sales

Sole appointed yacht brokers for the Beaulieu River. 01590 616316 | sales@bhboatsales.com

E Fuel and Water

Fuel and fresh water are available from the fuel pontoon, which is open until 6pm (4pm winter). Fresh water is also available in the marina.

F RNLI Lifejacket Lockers

A safe place for river users to temporarily store lifejackets when coming ashore. Each locker can hold up to four lifejackets.

G Buckler's Hard Water Taxi

Pick up/drop off point. Contact via VHF channel 68 *Beaulieu River Radio*.

H The Master Builder's House Hotel

Enjoy a meal at the Riverside Restaurant or the Yachtsman's Bar. The hotel offers 25 guest rooms, some with river views.

01590 616253 | themasterbuilders.co.uk

I Maritime Museum and The Buckler's Hard Story

Learn about the 18th century village where ships for Nelson's Navy were built. Open daily from 10am.

J BHG Service

Inboard and outboard engine sales, spares, repairs and accessories, servicing, winterising, inflatables, RIBs and all tenders.

01590 616479 | info@bhgservice.co.uk

K Captain's Cabin Tea Rooms and Gift Shop

Hot and cold snacks, cakes and cream teas. Open from 10am, 7 days a week.

01590 616293

L Engineering Workshop

On-site marine engineer Alex Cobb offers inboard and outboard engine service and repair.

07717 155871 | marinemaintenancegroup ltd@gmail.com

Bike Hire

Available from the Chandlery.

Fishing

Fishing from vessels moored in the river and from Buckler's Hard, Keeping Trees, Bailey's Hard and Park Shore is by permit only. Day and annual permits are obtainable from the Harbour Master's Office at a small charge.

Visitors with Disabilities

If you need assistance, please do not hesitate to contact one of the river staff. Please note: ramp access to the marina is steep at low tide.

COOKS MARITIME CRAFTSMEN

Boat Builder / Shipwright

Fully Insured and Qualified

Providing High Quality Craftsmanship

A wide range of repairs and re-fits carried out and craft maintained, from internal joinery, GRP, and timber repairs to boat washing, antifouling and painting

Local workshop at Lymington Yacht Haven

07952 955906 / 01590 675521
cooksmcraftsmen@gmail.com
www.cooksmaritime.co.uk



S.D. ELECTRONICS

MR STEPHEN EASTAUGH – MARINE ELECTRONICS ENGINEER

07551 949083 • eastaugh.pipistrelle@talktalk.net
7 Park Lane, Alderholt, Fordingbridge, Dorset, SP6 3AJ

INSTALLATION • REPAIR AND SERVICING OF ELECTRICAL SYSTEMS • WINTER REFURBISHMENTS
CHECKING AND CONNECTING ELECTRONICS ON LAUNCH • CHECKING BATTERIES
REPAIR OF ELECTRIC WINCHES AND BOW THRUSTER • SERVICING MASTHEAD UNITS
ALTERNATOR CHECKS AND STARTER MOTOR REPAIRS



WASTE & RECYCLING

The Beaulieu River is a beautiful place. Please help us keep it this way by following our waste and recycling guidelines.

Waste and recycling facilities can be found adjacent to the chandlery. Please make sure you use the correct bin. Contamination reduces the number of items we can recycle and may cause health and safety problems. If you are in doubt or need assistance please do not hesitate to ask one of the harbour staff.

Recycling

Bright blue or light grey bins with mixed recycling labels should be used for cans, aerosols, plastic bottles, paper and card.

Green bins should be used for glass bottles.

General waste

Non-recyclable waste should go into the bins labelled up general refuse. All waste must be compactable and must not be hazardous.

Pump-out service

There is a free pump-out facility near the fuel berth. Please ask at the harbour office for details before operating.

Oil, paint cans, fuel & oil filters, engine batteries & anti-freeze

Please ask harbour staff for details of how to deal with these.

Flares

Please contact the local Maritime Rescue Coordination Centre on 02392 552100.

Hazardous waste

We are unable to accept hazardous waste including, though not limited to, fuel, liquid chemicals, fuel tanks, any absorbent material used to clear oil, fuel or paint spillages, compressed gasses or their containers, clinical waste, mattresses, tyres.

The nearest hazardous waste disposal service is in Marchwood.



Photos by Brian Cartwright (above) and Vanessa Cook (right) shortlisted for winning the 2019 photographic competition.

GREENHAM REGIS

marine electronics

A Wärtsilä company

The Complete Marine Electronics Solution



ADVICE

SALES

INSTALLATION

SERVICE

Lymington • +44(0) 1590 671144 • lymington@greenham-regis.com

Southampton • +44(0) 2380 636555 • sales@greenham-regis.com

Chichester • +44(0) 1243 511070 • sales@greenham-regis.com

Raymarine **GARMIN** **FURUNO** **ICOM** **B&G** **SIMRAD**

www.greenham-regis.com



CHANDLERY

The on-site chandlery has recently been refurbished and now stocks an expanded range of goods.

Our product lines include rope, anti-fouling products, stainless steel hardware, Calor and camping gas. Groceries include fresh milk, bread, orange juice, confectionery, basic food and drinks and toiletries. Croissants, baguettes and newspapers are available at weekends and can be enjoyed at the seating area with a hot drink or ice cream. Your four-legged friends will also be wagging their tails with delight at the dog ice cream and other tasty treats, canine life jackets and eco-friendly toys!

If you'd like to order an item we don't stock, please speak to one of our team.

Open 7 days a week

chandlery@beaulieu.co.uk 01590 616200



MEET KELLY BOARDMAN

Kelly's love for boats began when her father purchased a 6-metre family boat. She instantly knew she wanted to work in the marine industry and we were fortunate to welcome her to the Beaulieu River in 2019 as the new Chandlery Supervisor.



Photo by Gordon Garrett, shortlisted for winning the 2019 photographic competition.

MARINE MAINTENANCE GROUP LTD

Providing Quality Marine
Engineering Services to
The South Coast

Inboard and Outboard
Engine Service and Repair

Website: marinemaintenancegroup.co.uk
Email: marinemaintenancegroup ltd@gmail.com

Tel: 07717155871
Bucklers Hard Yacht Harbour, Beaulieu

Specialising in:





BUCKLER'S HARD WATER TAXI

Beaulieu River customers can use the Buckler's Hard water taxi to travel between their boats on the river and the marina.

The taxi can be contacted via the Harbour Master's Office on 01590 616200 or VHF channel 68 **Beaulieu River Radio**, and starts from Visitor Pontoon South in the marina.

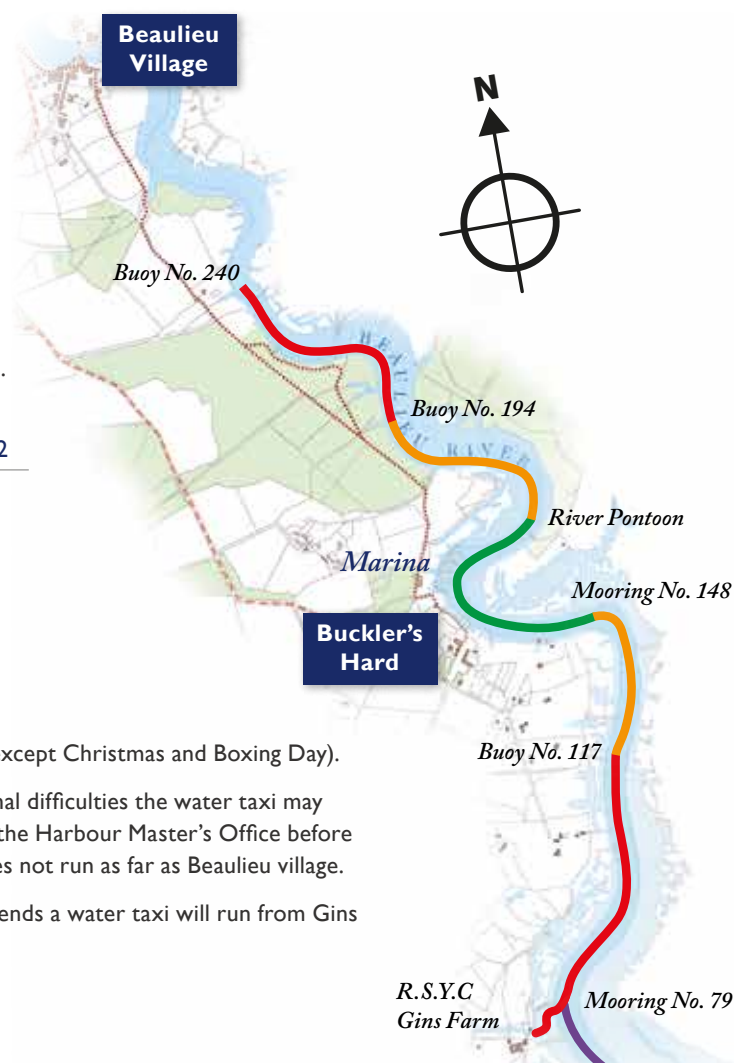
Single Trip	Adult	Child Under 12
	£1.50	£1.00
	£3.50	£2.50
	£6.00	£4.00
 Past Mooring No.79	£10.00	£8.00

Operating Times

Seven days a week throughout the year (except Christmas and Boxing Day).

Please note: Due to weather or operational difficulties the water taxi may not always be running. Please check with the Harbour Master's Office before planning your journey. The water taxi does not run as far as Beaulieu village.

From May through to September at weekends a water taxi will run from Gins Farm to serve moorings in this location.



R.S.Y.C
Gins Farm

Mooring No. 79



JOIN US

Experience the beauty and tranquillity of the Beaulieu River and visit us either for a day, overnight or perhaps even longer.

With a five Gold Anchors accreditation, award winning Buckler's Hard Yacht Harbour offers a sheltered setting for a range of fully serviced marina berths, while the scenic reaches of the Beaulieu River provide a peaceful setting for river moorings.

Yachts up to 20m can be comfortably accommodated and the on-site boatyard facilitates repair services, as well as lift-out, washdown and storage services all year round.

As well as a friendly service from experienced staff, **permanent berth and mooring holders** can enjoy benefits including:

- 🚢 30 days free storage and 10% off lift and launch throughout the year.
- 🚢 Reciprocal berthing arrangements with other marinas via membership of TransEurope.
- 🚢 Free WiFi throughout the marina.
- 🚢 Ample parking on-site.
- 🚢 CCTV and out of hours on-site security
- 🚢 Conveniently located boatyard services.
- 🚢 Special seasonal offers on boatyard services.
- 🚢 Buckler's Hard Water Taxi.
- 🚢 Recently refurbished lavatories, showers and a launderette.
- 🚢 Fuel jetty.
- 🚢 On-site chandlery/grocery shop open seven days a week.
- 🚢 Professional on-site yacht broker.
- 🚢 Social events for mooring holders.
- 🚢 Pop-up restaurant events on selected dates throughout the year.
- 🚢 Free entry to Buckler's Hard Maritime Museum for mooring holders.
- 🚢 Two tickets to the Beaulieu visitor attraction.
- 🚢 10% discount on food and drink available at The Master Builder's hotel and restaurant with the Beaulieu River Privilege Card.
- 🚢 Newsletter six times a year to keep you updated.



VISITING

From April 2020, we will have a dedicated visitor section in the marina with walk ashore access. Please report to the Harbour Master's Office upon arrival. The Harbour Master's Office can be contacted via VHF channel 68 **Beaulieu River Radio** or via telephone 01590 616200.

Rates from 1st April to the end of September 2020 for visiting yachts, per vessel, per night. Subject to availability. Visitor walk ashore berths can be booked in advance by contacting the Harbour Office.

	Overnight Cost per metre	Short Stay* Cost per metre
Walk Ashore	£4.00	£1.75
River (upstream of Needs Ore)	£2.25†	£1.00
Visitor Buoys VI-V8 (vessels up to 40ft)	£10.00 per night‡	£8.00

**Short stays are a maximum of 4 hours with the overnight fee applying after 3:30pm. Overnight visitors should vacate their mooring/berth by midday.*

† Yellow buoys with yellow V plate.

‡ White buoys with green V plate. Does not include use of the marina facilities.

OTHER SERVICES

Slipway: launch & recovery	£2 per metre
Canoe/kayak launch	£5 per vessel
Car parking	£5 per day

20% DISCOUNT

**on admission to
Beaulieu & Buckler's
Hard visitor attractions
for overnight visitors***

**Applies to on-the-day admission prices to Beaulieu and Buckler's Hard on presentation of a Beaulieu River mooring receipt.*





TransEurope Marinas offer reciprocal berthing arrangements for Beaulieu River mooring holders.

For details, please see transeuropemarinas.com



UK

1. Bangor Marina
2. Rhu Marina
3. Troon Yacht Haven
4. Royal Quays Marina
5. Whitehaven Marina
6. Fleetwood Haven Marina
7. Liverpool Marina
8. Conwy Quays Marina
9. Neyland Yacht Haven
10. Penarth Quays Marina
11. Upton Marina
12. Portishead Quays Marina
13. Mylor Yacht Harbour
14. Mayflower Marina
15. Dart Marina
16. Poole Quay Boat Haven
17. Buckler's Hard Yacht Harbour
18. Town Quay Marina
19. Universal Marina
20. Cowes Yacht Haven
21. Royal Clarence Marina
22. Emsworth Yacht Harbour
23. Birdham Pool Marina
24. Dover Marina
25. Gillingham Marina
26. Farnbridge Yacht Haven
27. Tollesbury Marina
28. Fox's Marina
29. Brundall Bay Marina
30. Hull Marina
31. Beaucette Marina

Republic of Ireland

1. Greystones Harbour Marina
2. Malahide Marina

France

1. Dunkerque
2. Saint-Valéry sur Somme
3. Saint-Valéry en Caux
4. Fécamp
5. Le Havre Plaisance
6. Port-Deauville
7. Dives-Cabourg-Houlgate
8. Ouistreham/Caen
9. Granville
10. Saint-Quay Port d'Armor
11. Perros-Guirec
12. Roscoff
13. Marinas de Brest
14. Douarnenez-Tréboul
15. Locudy
16. Port la Forêt
17. Concarneau
18. Ports de Nantes
19. La Rochelle

Germany

20. Sonwik Marina
21. Ancora Marina
22. Marina Boltenhagen
23. Marina Wiek auf Rügen
24. Baltic Sea Resort
25. Naturhafen Krummin
26. Lagunenstadt Ueckermünde

Netherlands

27. Marina Den Oever
28. Jachthaven Waterland
29. Jachthaven Wetterwille
30. Marina Port Zélande
31. Jachthaven Biesbosch
32. Delta Marina Kortgene

Belgium

1. VNZ Blankenberge
2. VY Nieuwpoort

Spain

1. Puerto Deportivo Gijón
2. Marina Muros
3. Marina Combarro
4. Nauta Sanxenxo
5. Marina Davila Sport
6. Marina La Palma
7. Puerto Calero
8. Alcaidesa Marina
9. Pobra Marina
10. Port Ginesta

Portugal

1. Douro Marina
2. Marina de Portimão
3. Quinta do Lorde Marina

Italy

1. Porto Romano
2. Venezia Certosa Marina
3. Marina del Cavallino

Croatia

1. Marina Punat

Greece

1. Linariá Marnia
2. Kos Marina

Morocco

1. Marina de Saïdia

STAYING SAFE ON THE RIVER

The Beaulieu River team work hard to ensure all visitors and vessels remain safe when using the river. Please help us to achieve this by observing the following safety rules.

Obligations

- ⚓ wear lifejackets.
- ⚓ keep your speed below the maximum of 5 knots to ensure minimum wash throughout the river.
- ⚓ keep to the starboard side of fairway.
- ⚓ wear kill cords where fitted.
- ⚓ ensure dogs are kept on leads at all times

Not permitted

- ⚓ swimming, jet-skiing, water-skiing or board sailing.
- ⚓ securing dogs or children to canoes or kayaks.
- ⚓ mooring onto navigation buoys, beacons or marks.
- ⚓ underwater diving activities without permission from the Harbour Master.
- ⚓ operating your vessel whilst intoxicated.
- ⚓ the flying of drones.

When arriving

- ⚓ from outside the UK with animals on board, you must have the correct paperwork from an authorised port of entry before using the river.
- ⚓ all commercial vessels, vessels over 20m, and, vessels not under command, restricted in ability to manoeuvre, or towing another vessel or structure are requested to give notice of their movements by calling Beaulieu River Radio on VHF channel 68.

Man overboard

- ⚓ in a 'man overboard' situation, call for help and then try to assist but without putting yourself in danger. There are emergency ladders on all marina and river pontoons. Call channel 68.

Slipway

- ⚓ check weather and tidal conditions. We advise against launching and recovering in the hours of darkness unless you are familiar with the slipway.
- ⚓ the slipway should not be used 2 hours either side of low water due to steep drop off.
- ⚓ do not block access; rig your boat away from the slipway.
- ⚓ be aware of pedestrians and other users of the slipway.
- ⚓ attach a safety line to your trailer.
- ⚓ never stand behind a boat whilst it is being launched or recovered.
- ⚓ if you are going to leave your car attached to the trailer whilst launching, switch off the engine, leave in gear, and make sure the handbrake is fully applied.
- ⚓ when parking a boat and trailer in the dinghy park, check that both are secure.

Pontoon

- ⚓ take care on the pontoons when wet, frosty or icy.

The marina is manned from 08:00–20:30 in summer and 08:00–16:30 in winter with security outside of these hours.

Please report any incidents or concerns to the Harbour Master's Office via VHF channel 68 *Beaulieu River Radio* or by calling 01590 616200. Out of hours call 999



OUR BOATYARD

Buckler's Hard Yacht Harbour is pleased to offer a competitive range of boatyard services all year round.

The boatyard operates a 35 tonne hoist which can lift vessels up to 18m in length. The boatyard team can lift, pressure wash and block ashore vessels in the boatyard, and we also offer mast removal and storage. On-site facilities include electricity and a chandlery.

Competitively priced under cover storage is available for when a more specialised service is required.

A list of approved suppliers can be instructed to work in the boatyard (see opposite page), or alternatively an open yard policy allows customers to bring in their own contractors for a small charge.

DID YOU KNOW....

Resident berth and mooring holders benefit from 10% off all boat lifts and launches as well as 30 days free storage any time of year*

*Excludes under cover storage

BOAT SERVICES

Cost (per metre)

Lift out, scrub off, block off/ load onto transport	£30.00
Launch from hard standing or road transport	£20.00
Lift, hold and re-launch	£25.00

Cost (per week)

Boat Storage	£6.00
Undercover Storage (per bay)	£120.00

For further details, prices and special offers, see beaulieu-river.co.uk/boatyard



BOAT REPAIR & MAINTENANCE SERVICES

The Buckler's Hard boatyard is operated on an open policy basis.

Boat owners, for a small charge, are welcome to use suppliers of their choice, provided they comply with our guidelines and register with the Harbour Master's Office. Alternatively, we have selected a number of approved suppliers who are known for their high standard of service and who are pre-registered to deliver services at Beaulieu River and the boatyard. If you don't find the service you are looking for here we will be happy to help you find the right specialist for your needs, please ask.



Boat Builders & Boat Maintenance

Cooks Maritime Craftsmen

Fully qualified and insured. A wide range of repairs and re-fits carried out and craft maintained, from internal joinery, GRP, and timber repairs to boat washing, antifouling and painting.

07952 955906 / 01590 675521

www.cooksmaritime.co.uk

cooksmcraftsmen@gmail.com

Jeremy Rogers Ltd

Quality repair and refurbishment of all boats. Home of the Contessa.

01590 646780 | www.jeremyrogers.co.uk

mail@jeremyrogers.co.uk

My Marine Finisher

Polishing, antifoul, monthly clean, varnishing, GRP repair. Matthew Young

07766 704659 | Mymarinefinisher@outlook.com

Brokerage & Yacht Sales

BH Boat Sales

Sole appointed yacht brokers for Beaulieu River.

01590 616316 | sales@bhboatsales.com

www.bhyachtbrokers.com

Marine Electronics

Greenham Regis

Sales, service and installation of all aspects in marine electronics.

01590 671144 | Lymington@greenham-regis.com

www.greenham-regis.com

S.D. Electronics

Marine electronics and electrical engineer. System install, repair electrical and electronic systems. Mast wiring, connections and servicing masthead units, checking batteries, repair of electric winches and bow thruster. Alternator and starter motor repairs.

07551 949083 | Eastaugh.pipistrelle@talktalk.net

Marine Engineers

BHG Service Ltd

Inboard and outboard engine sales, spares, repairs and accessories, servicing, winterising, inflatables, RIBs and all tenders.

01590 616479 | info@bhgservice.co.uk

www.bhgservice.co.uk

Marine Maintenance Group Ltd

Inboard and outboard engine service and repair.

07717 155871

marinemaintenancegrouppltd@gmail.com

www.marinemaintenancegroup.co.uk



MY FAVOURITE PLACE ON EARTH IS RIGHT HERE ON THE BEAUTIFUL BEAULIEU RIVER

It was, and continues to be, an immense privilege to have been brought up by my father Edward, Lord Montagu with our own playground of a river, the New Forest and a large garage of amazing cars. The cars were fun, especially when you had a Jaguar D-type go-cart, but it was the boats and all things wet and muddy that took my interest. At age 4, I wanted to be a pirate, then a deep sea diver, inspired by Jacques Cousteau and his underwater world films, and then sailor.

I asked to have my bedroom decorated in Palace House with a shipwreck scene and for my 5th birthday, I was given my own rowing boat to mess about in on the river. Muddy heaven.

My holidays were spent trying to catch eels or fish (I love fishing too), rowing, canoeing,

windsurfing and then sailing. My favourite place was on the Solent shore where my father had a wonderful modern beach house where we used to get away from the crowds who visited Beaulieu in their masses. We would catch prawns with a broom-like net at low water, then rush to boil them, watch them turn pink and eat them. Sadly they have now all nearly gone; climate change, overfishing or invasive species have in only 40 years destroyed the Solent prawn population.

I learnt to sail in a Mirror dinghy, firstly on the Lymington River and then went on to sailing camps around the Solent and later on the Sail Training Association schooner *Malcolm Miller* at 16. I just loved being at sea and all it could throw at me. Learning knots, climbing the rigging, night watches, galley duties and navigation and just being at sea. My father had a Nelson motor boat, *Cygnets of Beaulieu*, which we used to go out in for all the big Solent occasions, watching racing, Spithead reviews, Cowes fireworks and many large picnic lunches off Osborne Bay.

I bought a Laser, then a foiling Trimaran, then a RIB, then a Hobiecat, then a Scow, then a Cornish Coble then a Cornish Crabber Yawl. Oh dear, there are far too many boats and a mass of windsurfers in my garage. We live overlooking the Solent shore, near the entrance of the Beaulieu River and keep a constant watch on every thing that passes by.



I took over being Commodore of the Beaulieu River Sailing Club from my father in 2014 and I hardly ever miss a dinghy race on the river. My grandmother Pearl founded the club in 1932 and it continues to be a very family friendly club for locals, based at Needs Ore in summer and at the top of the river in spring and autumn. It is an absolute joy to dinghy sail on such an unspoilt river with its estuary creeks and wooded banks.

A love of maritime history is also a big part of my life. I consider myself a bit of an expert in the history of the river and of Buckler's Hard and its historic shipbuilding.

How lucky I am to be able to live my dream life, with the sea as my garden (and sometimes in it when it floods) and the river my playground.

Hon. Mrs Mary Montagu-Scott DL

Director of the Buckler's Hard Maritime Museum





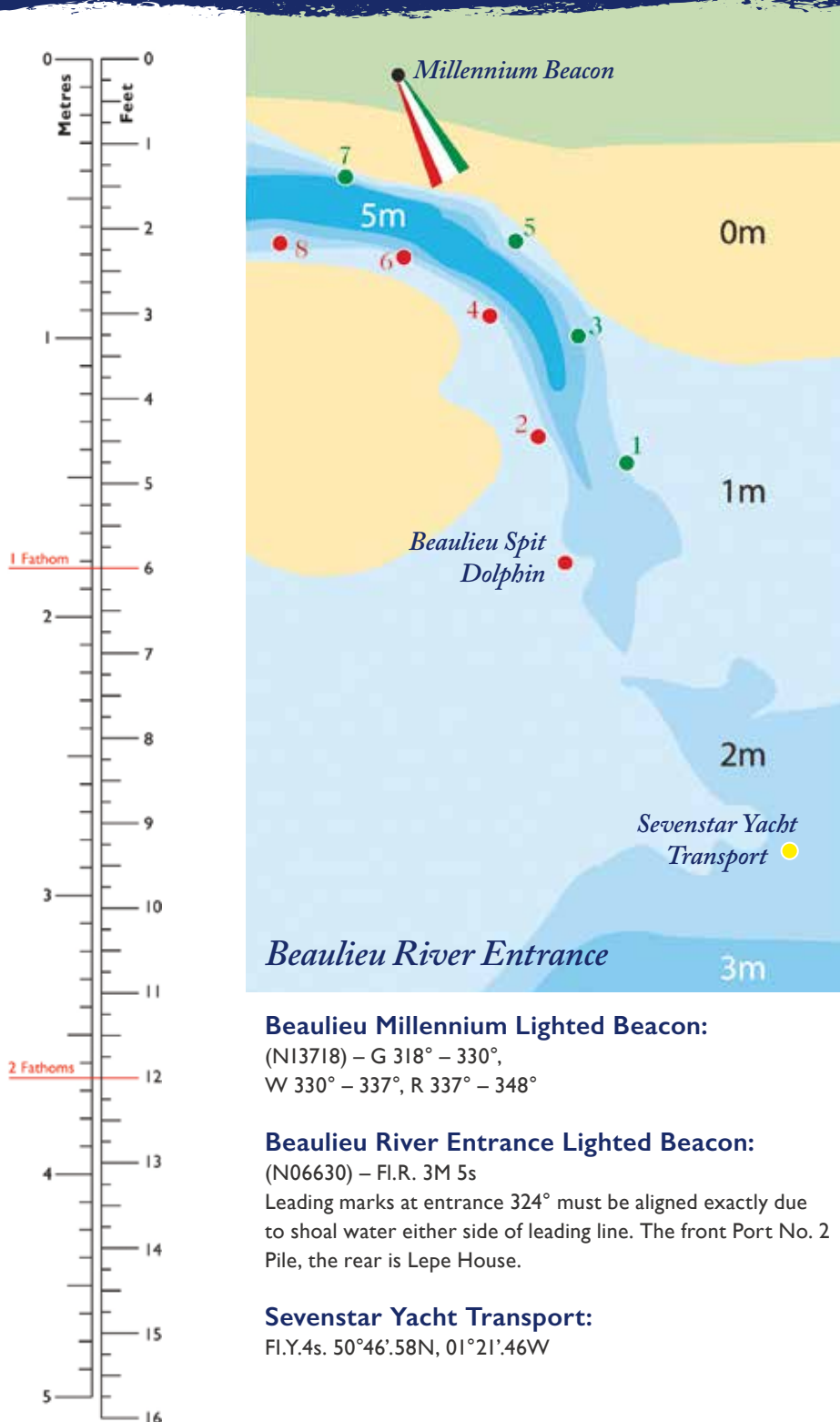
USEFUL CONTACT NUMBERS

Harbour Office.....	01590 616200 / harbour.office@beaulieu.co.uk
Buckler's Hard Village Manager & Maritime Museum.....	01590 616203
Car Hire – SHB Hire Ltd (Romsey)	01794 511458
Casualty – Lymington Hospital.....	01590 663000
Customs – National Yacht Line.....	0300 123 2012
RS Divers.....	023 9319 0409
Doctors – Waterfront & Solent Surgery.....	023 8084 1841
Trafalgar Dental Practice	023 8089 1936
National Motor Museum visitor enquiries.....	01590 612345
Cycle Hire - Harbour Office.....	01590 616200
Police (non-emergency).....	101
Royal Southampton Yacht Club, Gins Farm.....	02380 223352 (option 1)
Seadown Veterinary Group (Hythe branch).....	02380 842237
Tourist Information	thenewforest.co.uk

SOLENT HARBOUR OFFICES

Lymington.....	01590 672014
Cowes	01983 293952
Hamble.....	01489 576387
Yarmouth.....	01983 760321

NAVIGATION & TIDE TIMES 2020



JANUARY

FEBRUARY

MARCH

APRIL

Time	m	Time	m	Time	m	Time	m	Time	m	Time	m	Time	m	Time	m
1 0252 3.4 W 0819 1.5 1452 3.2 2034 1.4		16 0306 3.6 0828 0.9 TH 1517 3.5 2052 0.8		1 0332 3.3 0853 1.4 SA 1543 3.1 2112 1.4		16 0439 3.5 0954 1.3 SU 1706 3.2 2228 1.3		1 0247 3.3 0815 1.1 SU 1501 3.2 2033 1.1		16 0403 3.4 0923 1.2 M 1640 3.2 2201 1.5		1 0348 3.1 0916 1.4 W 1630 3.0 2146 1.7		16 0547 2.9 1133 1.7 TH 1839 3.0	
2 0337 3.3 0859 1.7 TH 1540 3.1 2117 1.5		17 0409 3.5 0922 1.2 F 1626 3.4 2151 1.1		2 0420 3.2 0939 1.6 SU 1639 3.0 2202 1.6		17 0541 3.3 1112 1.5 M 1813 3.1 2351 1.5		2 0331 3.2 0856 1.3 M 1553 3.1 2118 1.4		17 0507 3.2 1042 1.5 TU 1753 3.1 2327 1.7		2 0503 2.9 1027 1.6 TH 1759 2.9 2334 1.8		17 0013 1.8 0700 2.8 F 1245 1.7 1954 3.1	
3 0424 3.2 0949 1.8 F 1634 3.0 2211 1.7		18 0511 3.5 1029 1.4 SA 1735 3.2 2304 1.3		3 0519 3.1 1040 1.7 M 1746 2.9 2313 1.7		18 0644 3.2 1234 1.5 TU 1919 3.1		3 0428 3.1 0948 1.5 TU 1659 2.9 2217 1.7		18 0618 3.0 1207 1.6 W 1902 3.0		3 0636 2.9 1238 1.6 F 1931 3.1		18 0123 1.7 0807 3.0 SA 1347 1.5 2108 3.2	
4 0521 3.2 1101 1.9 SA 1740 2.9 2324 1.7		19 0612 3.4 1147 1.4 SU 1836 3.2		4 0623 3.0 1206 1.7 TU 1859 2.9		19 0106 1.6 0746 3.2 W 1344 1.4 2025 3.1		4 0539 2.9 1105 1.7 W 1820 2.8 2357 1.8		19 0045 1.7 0727 2.9 TH 1320 1.6 2015 3.1		4 0119 1.6 0754 3.1 SA 1348 1.2 2028 3.3		19 0220 1.5 0853 3.1 SU 1438 1.2 2124 3.4	
5 0625 3.1 1212 1.8 SU 1853 2.9		20 0019 1.4 0709 3.4 M 1259 1.4 1934 3.2		5 0041 1.7 0742 3.1 W 1324 1.5 2026 3.0		20 0214 1.5 0843 3.2 TH 1443 1.2 2125 3.2		5 0701 2.9 1258 1.6 TH 1956 3.0		20 0155 1.6 0829 3.1 F 1421 1.4 2138 3.2		5 0220 1.2 0842 3.3 SU 1443 0.7 2110 3.5		20 0306 1.2 0959 3.4 M 1522 0.9 2150 3.5	
6 0031 1.7 0737 3.2 M 1311 1.6 2006 3.0		21 0125 1.4 0805 3.4 TU 1401 1.3 2033 3.2		6 0152 1.5 0846 3.2 TH 1426 1.3 2115 3.2		21 0309 1.3 0928 3.3 F 1534 0.9 2205 3.4		6 0135 1.6 0821 3.1 F 1409 1.3 2052 3.2		21 0249 1.4 0914 3.2 SA 1510 1.1 2152 3.4		6 0310 0.7 0922 3.5 M 1533 0.4 2148 3.7		21 0348 0.9 0959 3.4 TU 1603 0.8 2222 3.5	
7 0129 1.6 0831 3.2 TU 1402 1.4 2056 3.2		22 0225 1.3 0856 3.4 W 1457 1.1 2128 3.3		7 0251 1.3 0928 3.4 F 1522 0.8 2154 3.5		22 0357 1.1 1006 3.4 SA 1620 0.7 2237 3.5		7 0238 1.3 0906 3.3 SA 1505 0.8 2134 3.5		22 0336 1.1 0948 3.3 SU 1555 0.8 2216 3.5		7 0357 0.4 1001 3.7 TU 1620 0.1 2228 3.9		22 0426 0.7 1034 3.5 W 1640 0.7 2254 3.5	
8 0220 1.4 0913 3.4 W 1451 1.2 2136 3.3		23 0320 1.2 0941 3.5 TH 1548 0.8 2214 3.5		8 0346 0.9 1006 3.5 SA 1613 0.5 2231 3.6		23 0442 0.8 1041 3.5 SU 1702 0.5 2311 3.5		8 0331 0.8 0946 3.5 SU 1556 0.4 2211 3.7		23 0419 0.8 1022 3.4 M 1636 0.6 2248 3.5		8 0443 0.1 1040 3.9 W 1704 -0.2 2306 3.9		23 0501 0.6 1108 3.5 TH 1713 0.7 2327 3.5	
9 0310 1.2 0949 3.5 TH 1540 0.8 2211 3.5		24 0411 0.9 1020 3.5 F 1635 0.7 2253 3.5		9 0435 0.6 1042 3.7 SU 1702 0.2 2310 3.7		24 0521 0.6 1117 3.5 M 1738 0.5 2350 3.5		9 0420 0.4 1023 3.7 M 1643 0.1 2250 3.8		24 0457 0.6 1057 3.5 TU 1713 0.5 2321 3.5		9 0525 -0.1 1120 3.9 TH 1744 -0.2 2353 3.9		24 0529 0.6 1143 3.5 F 1741 0.7	
10 0401 0.9 1023 3.6 F 1628 0.6 2247 3.6		25 0457 0.8 1058 3.5 SA 1719 0.6 2332 3.5		10 0521 0.4 1120 3.8 M 1743 0.1 2355 3.8		25 0556 0.6 1159 3.5 TU 1810 0.5		10 0506 0.2 1101 3.8 TU 1726 -0.2 2331 3.9		25 0531 0.6 1133 3.5 W 1743 0.5		10 0604 -0.1 1212 3.9 F 1823 0.1		25 0000 3.5 0556 0.6 SA 1215 3.5 1809 0.7	
11 0449 0.7 1059 3.7 SA 1715 0.4 2325 3.7		26 0538 0.7 1138 3.5 SU 1757 0.5		11 0602 0.2 1207 3.8 TU 1823 -0.1		26 0032 3.5 0625 0.7 W 1238 3.6 1837 0.6		11 0545 -0.1 1145 3.9 W 1805 -0.3		26 0000 3.5 0558 0.6 TH 1211 3.5 1810 0.6		11 0042 3.9 0642 0.2 SA 1306 3.8 1902 0.3		26 0030 3.5 0623 0.6 SU 1248 3.5 1837 0.8	
12 0533 0.6 1138 3.7 SU 1756 0.3		27 0016 3.5 0614 0.8 M 1222 3.5 1831 0.6		12 0046 3.9 0642 0.2 W 1256 3.8 1903 0.1		27 0108 3.5 0650 0.7 TH 1312 3.5 1901 0.7		12 0021 3.9 0625 -0.1 TH 1235 3.9 1843 -0.2		27 0034 3.5 0623 0.6 F 1242 3.5 1834 0.6		12 0135 3.8 0723 0.4 SU 1408 3.6 1944 0.7		27 0101 3.5 0652 0.7 M 1325 3.5 1909 0.8	
13 0013 3.8 0614 0.5 M 1225 3.7 1836 0.3		28 0100 3.5 0647 0.8 TU 1303 3.5 1901 0.7		13 0141 3.8 0723 0.3 TH 1352 3.7 1944 0.3		28 0140 3.5 0713 0.8 F 1343 3.4 1927 0.7		13 0113 3.9 0703 0.1 F 1329 3.8 1923 0.2		28 0103 3.5 0646 0.7 SA 1313 3.5 1859 0.7		13 0231 3.5 0806 0.8 M 1513 3.5 2031 1.2		28 0138 3.4 0726 0.8 TU 1409 3.4 1946 1.1	
14 0105 3.8 0656 0.6 TU 1315 3.7 1918 0.4		29 0141 3.5 0716 0.9 W 1341 3.4 1929 0.8		14 0240 3.7 0807 0.6 F 1453 3.5 2028 0.5		29 0210 3.4 0742 0.8 SA 1418 3.3 1957 0.8		14 0209 3.8 0744 0.4 SA 1430 3.6 2005 0.5		29 0132 3.5 0713 0.7 SU 1346 3.4 1930 0.8		14 0326 3.4 0859 1.2 TU 1616 3.2 2138 1.6		29 0224 3.3 0807 1.1 W 1506 3.2 2032 1.4	
15 0204 3.7 0739 0.7 W 1412 3.6 2003 0.5		30 0217 3.5 0744 1.1 TH 1417 3.3 1958 0.9		15 0340 3.6 0855 0.8 SA 1558 3.4 2120 0.9				15 0306 3.6 0828 0.7 SU 1534 3.5 2053 0.9		30 0207 3.4 0746 0.8 M 1429 3.3 2005 1.1		15 0428 3.1 1015 1.6 W 1727 3.1 2258 1.8		30 0325 3.2 0859 1.3 TH 1618 3.2 2132 1.6	
		31 0251 3.4 0815 1.3 F 1457 3.2 2031 1.2								31 0250 3.2 0826 1.1 TU 1522 3.2 2048 1.3					

In the approaches to and within the Western Solent double high waters occur at or near springs; on other occasions there is a stand which lasts about 2 hours. The predictions refer to the first high water when there are two and are approximate.

For Summer Time add one hour in yellow areas. Tide differences: Portsmouth +27 mins (approx.) Dover +4 mins (approx.)

MAY

JUNE

JULY

AUGUST

Time 1 0444 3.0 F 1745 3.1 2320 1.7	m	Time 16 0618 2.8 SA 1909 3.1	m	Time 1 0011 1.4 M 0652 3.2 1242 1.2 1928 3.5	m	Time 16 0045 1.7 TU 0733 3.0 1303 1.6 2002 3.2	m	Time 1 0041 1.3 W 0721 3.3 1310 1.1 1951 3.5	m	Time 16 0041 1.7 TH 0745 3.0 1304 1.6 2011 3.2	m	Time 1 0227 1.2 SA 0903 3.3 1455 1.2 2118 3.5	m	Time 16 0206 1.5 SU 0909 3.2 1434 1.5 2117 3.3	m
2 0613 3.0 1209 1.5 SA 1901 3.2	m	17 0038 1.8 SU 0724 2.9 1301 1.6 2004 3.2	m	2 0117 1.2 TU 0745 3.4 1341 0.9 2016 3.6	m	17 0138 1.5 W 0824 3.1 1408 1.1 2047 3.3	m	2 0144 1.1 TH 0814 3.4 1408 1.1 2040 3.5	m	17 0138 1.5 F 0844 3.1 1400 1.5 2100 3.3	m	2 0323 0.9 SU 0955 3.5 1528 3.1 2200 3.5	m	17 0302 1.1 M 0946 3.4 1528 1.2 2153 3.5	m
3 0052 1.5 0723 3.2 SU 1319 1.2 1959 3.4	m	18 0138 1.6 M 0816 3.1 1355 1.4 2044 3.3	m	3 0213 0.8 W 0832 3.5 1435 0.7 2100 3.7	m	18 0223 1.4 TH 0908 3.2 1439 1.3 2126 3.4	m	3 0241 0.9 F 0905 3.5 1504 0.9 2127 3.6	m	18 0230 1.3 SA 0929 3.2 1454 1.4 2139 3.4	m	3 0414 0.7 M 1037 3.8 1639 0.5 2240 3.5	m	18 0353 0.7 TU 1020 3.5 1618 0.8 2227 3.6	m
4 0152 1.2 0814 3.4 M 1504 0.8 2043 3.6	m	19 0227 1.4 TU 0856 3.2 1441 1.2 2120 3.5	m	4 0303 0.6 TH 0917 3.6 1525 0.5 2142 3.8	m	19 0306 1.2 F 0948 3.3 1523 1.2 2202 3.5	m	4 0335 0.7 SA 0955 3.5 1558 0.8 2211 3.6	m	19 0321 1.1 SU 1007 3.4 1545 1.2 2214 3.5	m	4 0502 0.6 TU 1115 3.5 1722 0.7 2318 3.5	m	19 0441 0.4 W 1054 3.7 1705 0.5 ● 2303 3.7	m
5 0243 0.7 0857 3.5 TU 1504 0.5 2124 3.8	m	20 0308 1.2 W 0934 3.3 1522 1.1 2154 3.5	m	5 0353 0.5 F 1002 3.7 1614 0.5 O 2224 3.8	m	20 0349 0.9 SA 1025 3.4 1608 1.1 2235 3.5	m	5 0426 0.6 SU 1042 3.5 1649 0.7 O 2252 3.6	m	20 0411 0.8 M 1041 3.5 1633 0.9 ● 2247 3.6	m	5 0541 0.5 W 1200 3.6 1801 0.7	m	20 0524 0.2 TH 1134 3.8 1744 0.4 2343 3.8	m
6 0331 0.4 0937 3.7 W 1552 0.3 2204 3.9	m	21 0348 0.9 TH 1010 3.4 1602 0.9 2228 3.5	m	6 0441 0.4 SA 1048 3.7 1703 0.5 2306 3.8	m	21 0431 0.8 SU 1058 3.5 1651 0.9 ● 2306 3.5	m	6 0514 0.5 M 1130 3.6 1735 0.7 2336 3.6	m	21 0457 0.6 TU 1115 3.6 1719 0.7 2322 3.6	m	6 0002 0.5 TH 0618 1.5 1246 3.5 1837 0.8	m	21 0603 0.1 F 1222 3.9 1823 0.3	m
7 0418 0.2 1019 3.8 TH 1639 0.2 O 2243 3.9	m	22 0424 0.8 F 1045 3.5 1639 0.8 ● 2259 3.5	m	7 0526 0.4 SU 1138 3.7 1746 0.6 2354 3.7	m	22 0513 0.7 M 1133 3.5 1732 0.8 2342 3.6	m	7 0556 0.5 TU 1224 3.6 1815 0.8	m	22 0539 0.4 W 1158 3.7 1759 0.6	m	7 0047 3.5 F 0652 0.7 1330 3.5 1910 0.9	m	22 0029 3.8 SA 0642 0.1 1312 3.9 1902 0.4	m
8 0503 0.1 1102 3.8 F 1722 0.2 2325 3.9	m	23 0500 0.7 SA 1116 3.5 1715 0.8 2330 3.5	m	8 0608 0.5 M 1238 3.6 1828 0.7	m	23 0551 0.6 TU 1216 3.5 1810 0.8	m	8 0024 3.5 W 0635 0.6 1315 3.5 1856 0.9	m	23 0006 3.6 TH 0619 0.4 1246 3.7 1839 0.6	m	8 0130 3.4 SA 0722 0.8 1410 3.5 1939 1.1	m	23 0120 3.7 SU 0721 0.3 1408 3.8 1943 0.5	m
9 0543 0.2 1151 3.8 SA 1802 0.3	m	24 0532 0.7 SU 1153 3.5 1747 0.8	m	9 0045 3.6 TU 0649 0.6 1339 3.6 1911 0.9	m	24 0023 3.5 W 0629 0.6 1303 3.6 1849 0.8	m	9 0112 3.5 TH 0713 0.7 1404 3.5 1935 1.1	m	24 0051 3.6 F 0658 0.4 1338 3.7 1920 0.6	m	9 0208 3.3 SU 0750 1.1 1446 3.4 2009 1.3	m	24 0218 3.6 M 0803 0.5 1506 3.7 2028 0.8	m
10 0015 3.8 0623 0.3 SU 1249 3.7 1842 0.5	m	25 0003 3.5 M 0604 0.7 1229 3.5 1821 0.8	m	10 0135 3.5 W 0731 0.8 1433 3.5 1956 1.2	m	25 0108 3.6 TH 0709 0.6 1355 3.5 1931 0.9	m	10 0159 3.4 F 0751 0.9 1449 3.5 2014 1.3	m	25 0143 3.6 SA 0740 0.5 1435 3.7 2004 0.7	m	10 0246 3.2 M 0821 1.2 1521 3.3 2042 1.4	m	25 0323 3.5 TU 0851 0.9 1605 3.5 2121 1.2	m
11 0106 3.7 0704 0.5 M 1353 3.6 1926 0.8	m	26 0039 3.5 TU 0638 0.7 1313 3.5 1856 0.9	m	11 0226 3.4 TH 0817 1.1 1523 3.4 2046 1.4	m	26 0200 3.5 F 0753 0.7 1455 3.5 2019 1.1	m	11 0246 3.3 SA 0828 1.2 1531 3.4 2053 1.4	m	26 0243 3.5 SU 0826 0.6 1535 3.6 2052 0.9	m	11 0328 3.2 M 0859 1.4 1603 3.2 2124 1.6	m	26 0431 3.3 W 0952 1.3 1707 3.4 2233 1.5	m
12 0159 3.5 0748 0.8 TU 1456 3.5 2013 1.2	m	27 0120 3.5 W 0715 0.8 1403 3.5 1937 1.1	m	12 0319 3.2 TH 0908 1.4 1614 3.3 2142 1.6	m	27 0302 3.4 SA 0843 0.9 1557 3.5 2113 1.2	m	12 0332 3.2 SU 0909 1.4 1614 3.2 2138 1.6	m	27 0348 3.5 M 0917 0.9 1634 3.5 2148 1.2	m	12 0419 3.1 W 0946 1.6 1654 3.1 2220 1.7	m	27 0544 3.2 TH 1115 1.6 1813 3.2 2355 1.6	m
13 0255 3.3 0839 1.2 W 1552 3.3 2114 1.6	m	28 0211 3.4 TH 0759 0.9 1503 3.4 2026 1.3	m	13 0417 3.1 SA 1005 1.5 1711 3.2 2240 1.7	m	28 0411 3.3 SU 0941 1.1 1701 3.5 2217 1.3	m	13 0421 3.1 M 0956 1.6 1701 3.2 2232 1.7	m	28 0455 3.3 TU 1019 1.2 1736 3.5 2256 1.3	m	13 0521 2.9 TH 1050 1.8 1756 3.0 2338 1.8	m	28 0651 3.2 F 1235 1.7 1919 3.2	m
14 0352 3.2 0944 1.5 TH 1653 3.2 2223 1.8	m	29 0314 3.2 F 0852 1.2 1611 3.3 2127 1.5	m	14 0523 2.9 SU 1106 1.6 1814 3.2 2345 1.8	m	29 0522 3.2 M 1050 1.2 1804 3.5 2330 1.3	m	14 0519 2.9 TU 1055 1.7 1758 3.1 2337 1.7	m	29 0602 3.2 W 1133 1.3 1834 3.4	m	14 0634 2.8 F 1219 1.9 1914 3.0	m	29 0112 1.5 SA 0802 3.2 1345 1.6 2020 3.2	m
15 0501 2.9 1051 1.6 F 1804 3.1 2331 1.8	m	30 0430 3.2 SA 1002 1.3 1725 3.3 2248 1.6	m	15 0633 2.9 M 1207 1.6 1912 3.2	m	30 0625 3.2 TU 1204 1.2 1900 3.5	m	15 0627 2.9 W 1203 1.7 1904 3.1	m	30 0013 1.4 TH 0703 3.2 1247 1.4 1933 3.4	m	15 0100 1.7 SA 0819 3.0 1333 1.7 2035 3.2	m	30 0216 1.4 SU 0910 3.3 1445 1.4 2110 3.3	m
		31 0550 3.2 1129 1.3 SU 1832 3.4	m							31 0124 1.3 0805 3.2 F 1354 1.4 2029 3.4	m			31 0310 1.1 M 1000 3.5 1536 1.2 2148 3.5	m

In the approaches to and within the Western Solent double high waters occur at or near springs; on other occasions there is a stand which lasts about 2 hours. The predictions refer to the first high water when there are two and are approximate.

For Summer Time add one hour in yellow areas. Tide differences: Portsmouth +27 mins (approx.) Dover +4 mins (approx.)

SEPTEMBER				OCTOBER				NOVEMBER				DECEMBER			
Time	m	Time	m	Time	m	Time	m	Time	m	Time	m	Time	m	Time	m
1 0358 TU 1026 1622 2224	0.8 3.5 0.9 3.5	16 0333 W 0957 1557 2204	0.6 3.7 0.7 3.7	1 0416 TH 1035 1639 O 2239	0.7 3.6 0.7 3.5	16 0352 F 1007 1618 ● 2217	0.3 3.9 0.3 3.9	1 0457 SU 1112 1717 2324	0.8 3.7 0.8 3.6	16 0456 M 1100 1720 2319	0.3 4.0 0.3 3.9	1 0500 TU 1118 1719 2340	1.1 3.6 0.8 3.5	16 0524 W 1128 1748	0.6 3.9 0.4
2 0443 W 1057 1705 O 2300	0.6 3.6 3.7 3.5	17 0420 TH 1031 1643 ● 2240	0.3 3.9 0.4 3.9	2 0455 F 1106 1716 2314	0.6 3.7 0.7 3.5	17 0437 SA 1043 1702 2255	0.1 4.0 0.2 3.9	2 0527 M 1145 1743 2359	0.9 3.6 0.8 3.6	17 0538 TU 1145 1801	0.4 3.9 0.4	2 0533 W 1150 1750	1.1 3.6 0.8	17 0007 TH 0607 1830	3.8 0.7 3.8 0.5
3 0522 TH 1133 1741 2338	0.5 3.6 0.6 3.5	18 0504 F 1109 1725 2317	0.1 3.9 0.2 3.9	3 0529 SA 1142 1747 2351	0.6 3.7 0.7 3.5	18 0519 SU 1122 1721 2338	0.1 4.0 0.2 3.9	3 0555 TU 1215 1809	0.9 3.6 0.9	18 0014 W 0620 1237 1842	3.9 0.6 3.9 0.6	3 0014 TH 0604 1223 1822	3.5 1.1 3.5 0.9	18 0107 F 0651 1311 1912	3.7 0.9 3.6 0.7
4 0556 F 1214 1814	0.5 3.6 0.7	19 0543 SA 1153 1803	-0.1 3.9 0.2	4 0557 SU 1219 1812	0.7 3.6 0.8	19 0558 M 1211 1820	0.2 4.0 0.3	4 0029 W 0621 1245 1836	3.5 1.1 3.5 0.9	19 0115 TH 0703 1332 1927	3.7 0.9 3.7 0.8	4 0051 F 0638 1300 1856	3.5 1.2 3.5 0.9	19 0209 SA 0735 1405 1958	3.6 1.2 3.5 1.1
5 0020 SA 0626 1254 1842	3.5 3.6 3.6 0.8	20 0003 SU 0621 1241 1842	3.9 0.1 3.9 0.2	5 0026 M 0622 1249 1835	3.5 3.6 3.6 0.9	20 0030 TU 0638 1302 1859	3.9 0.4 3.9 0.5	5 0103 TH 0650 1317 1906	3.5 1.2 3.5 1.1	20 0225 F 0751 1431 2018	3.6 1.3 3.5 1.3	5 0135 SA 0714 1343 1934	3.5 1.3 3.4 1.1	20 0304 SU 0825 1501 2047	3.5 1.4 3.3 1.3
6 0058 SU 0652 1329 1906	3.5 3.8 3.5 0.9	21 0054 M 0659 1334 1921	3.9 0.3 3.9 0.5	6 0055 TU 0645 1317 1859	3.5 0.9 3.5 0.9	21 0129 W 0719 1358 1943	3.8 0.7 3.7 0.8	6 0144 F 0724 1358 1943	3.5 1.3 3.4 1.3	21 0332 SA 0852 1532 2123	3.5 1.6 3.3 1.5	6 0229 SU 0757 1436 2022	3.4 1.4 3.3 1.3	21 0357 M 0920 1558 2144	3.4 1.6 3.2 1.5
7 0130 M 0715 1359 1931	3.4 0.9 3.5 1.1	22 0152 TU 0740 1433 2005	3.7 0.6 3.7 0.8	7 0127 W 0712 1348 1928	3.5 1.1 3.5 1.1	22 0238 TH 0807 1500 2036	3.6 1.3 3.5 1.3	7 0237 SA 0805 1453 2029	3.3 1.6 3.2 1.5	22 0435 SU 1004 1642 2232	3.3 1.8 3.1 1.7	7 0334 M 0850 1545 2120	3.3 1.6 3.2 1.4	22 0453 TU 1022 1702 2245	3.2 1.8 3.0 1.7
8 0203 TU 0652 1432 2001	3.4 1.1 3.4 1.2	23 0258 W 0827 1532 2057	3.5 1.1 3.5 1.3	8 0207 TH 0744 1430 2004	3.4 1.3 3.3 1.3	23 0352 F 0914 1606 2154	3.4 1.7 3.2 1.6	8 0345 SU 0900 1606 2136	3.2 1.8 3.1 1.7	23 0545 M 1111 1758 2338	3.2 1.9 3.0 1.7	8 0445 TU 1002 1706 2240	3.3 1.7 3.2 1.5	23 0554 W 1128 1810 2349	3.2 1.8 2.9 1.7
9 0244 M 0816 1513 2038	3.2 1.3 3.2 1.4	24 0410 TH 0932 1637 2215	3.4 1.5 3.3 1.6	9 0258 F 0824 1523 2049	3.2 1.6 3.2 1.6	24 0505 SA 1039 1722 2310	3.2 1.9 3.1 1.8	9 0508 M 1041 1735 2341	3.2 2.0 3.0 1.7	24 0653 TU 1218 1906	3.2 1.9 3.0	9 0558 W 1134 1818	3.3 1.6 3.2	24 0650 TH 1231 1912	3.2 1.8 3.0
10 0334 TH 0858 1605 2127	3.2 1.6 3.2 1.7	25 0525 F 1102 1753 2338	3.2 1.8 3.2 1.7	10 0403 SA 0918 1632 2159	3.1 1.9 3.0 1.9	25 0620 SU 1150 1839	3.2 1.9 3.0	10 0632 TU 1227 1855	3.2 1.8 3.2	25 0040 W 0802 1318 2004	1.7 3.3 1.7 3.1	10 0006 TH 1246 1916	1.4 3.5 3.3	25 0047 F 0745 1327 2007	1.7 3.2 1.6 3.1
11 0435 F 0954 1710 2240	3.0 1.9 3.0 1.9	26 0639 SA 1219 1904	3.1 1.9 3.1	11 0528 SU 1132 1802	3.0 2.1 2.9	26 0020 M 0805 1258 2040	1.8 3.2 1.8 3.1	11 0051 W 0737 1325 1951	1.5 3.4 1.5 3.4	26 0136 TH 0840 1408 2044	1.5 3.4 1.5 3.2	11 0110 F 0750 1343 2007	1.2 3.5 1.2 3.5	26 0140 SA 0832 1415 2055	1.6 3.3 3.2 1.5
12 0555 SA 1145 1829	2.9 2.0 2.9	27 0052 SU 0805 1327 2017	1.7 3.2 1.8 3.2	12 0019 M 0712 1301 1934	1.8 3.1 1.9 3.1	27 0122 TU 0907 1356 2129	1.6 3.4 1.6 3.2	12 0145 TH 0823 1416 2034	1.1 3.6 1.1 3.5	27 0223 F 0910 1453 2121	1.4 3.5 1.3 3.4	12 0204 SA 0836 1435 2053	0.9 3.7 0.8 3.6	27 0226 SU 0915 1458 2139	1.5 3.4 1.3 3.3
13 0037 SU 0750 1318 2007	1.8 3.0 3.1 3.1	28 0155 M 0930 1425 2144	1.5 3.4 1.5 3.3	13 0125 TU 0814 1357 2024	1.5 3.3 1.5 3.3	28 0216 W 0946 1444 2121	1.4 3.5 1.4 3.4	13 0236 F 0902 1503 2114	0.7 3.8 0.7 3.8	28 0305 SA 0942 1533 2157	1.2 3.5 1.1 3.5	13 0256 SU 0919 1525 2138	0.7 3.8 0.6 3.7	28 0312 M 0954 1539 2219	1.3 3.5 1.2 3.4
14 0148 M 0844 1419 2052	1.5 3.2 1.5 3.3	29 0247 TU 1013 1514 2135	1.2 3.5 1.2 3.4	14 0218 W 0854 1446 2102	1.1 3.5 1.1 3.5	29 0301 TH 0950 1528 2145	1.2 3.6 1.1 3.5	14 0323 SA 0941 1550 2155	0.5 3.9 0.4 3.9	29 0346 SU 1016 1610 2233	1.1 3.6 0.9 3.5	14 0347 M 1002 1615 ● 2224	0.6 3.9 0.5 3.8	29 0355 TU 1029 1621 2252	1.2 3.5 0.9 3.5
15 0243 TU 0922 1510 2129	1.1 3.5 1.1 3.5	30 0334 W 1016 1557 2206	0.9 3.6 0.9 3.5	15 0306 TH 0930 1532 2139	0.6 3.8 0.6 3.8	30 0344 F 1009 1608 2218	0.9 3.6 0.9 3.5	15 0410 SU 1019 1636 ● 2236	0.3 4.0 0.3 3.9	30 0424 M 1048 1646 O 2306	1.1 3.6 0.9 3.5	15 0436 TU 1704 2311	0.6 3.9 0.4	30 0437 W 1701 O 2324	1.1 3.5 0.8 3.5
				31 0422 SA 1040 1645 O 2252	0.8 3.7 0.8 3.5									31 0517 TH 1132 1738	0.9 3.6 0.7

In the approaches to and within the Western Solent double high waters occur at or near springs; on other occasions there is a stand which lasts about 2 hours. The predictions refer to the first high water when there are two and are approximate.

For Summer Time add one hour in yellow areas. Tide differences: Portsmouth +27 mins (approx.) Dover +4 mins (approx.)

COMMON BURGEES ON THE SOLENT

Design our 50th anniversary burgee

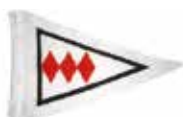
In 2021 we'll be giving all mooring holders a special burgee to mark the 50th anniversary of the opening of Buckler's Hard Yacht Harbour – and we'd like you to help us design it.

Send your designs to competitions@beaulieu.co.uk by 30th September 2020.

Visit beaulieuriver.co.uk/anniversary-burgee for more information.



Beaulieu River and
Buckler's Hard
Yacht Harbour



Beaulieu River
Sailing Club



Bembridge
Sailing Club



Eling Sailing Club



Emsworth Slipper
Sailing Club



Hornet
Sailing Club



Hythe Sailing Club



Island Sailing Club



Keyhaven
Yacht Club



Little Ship Club



Lymington Town
Sailing Club



Nelson
Owners Club



Nimbus
Owners Club



Ocean
Cruising Club



Old Carthusian
Yacht Club



Royal Air Force
Yacht Club



Royal Albert
Yacht Club



Royal Artillery
Yacht Club



Royal Channel
Islands Yacht Club



Royal Dorset
Yacht Club



Royal London
Yacht Club



Royal Lymington
Yacht Club



Royal Motor
Yacht Club



Royal Naval
Sailing Association



Royal Solent
Yacht Club



Royal
Southampton
Yacht Club



Royal Southern
Yacht Club



Royal Victoria
Yacht Club

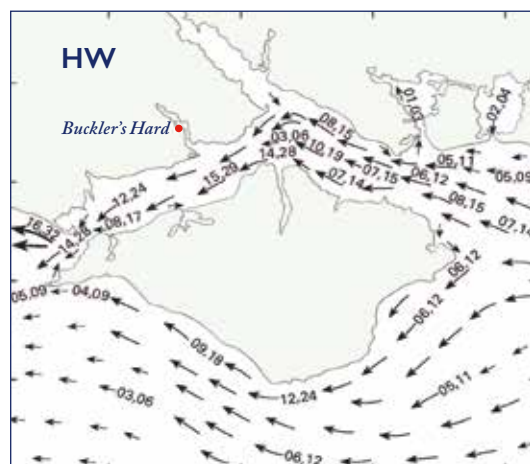
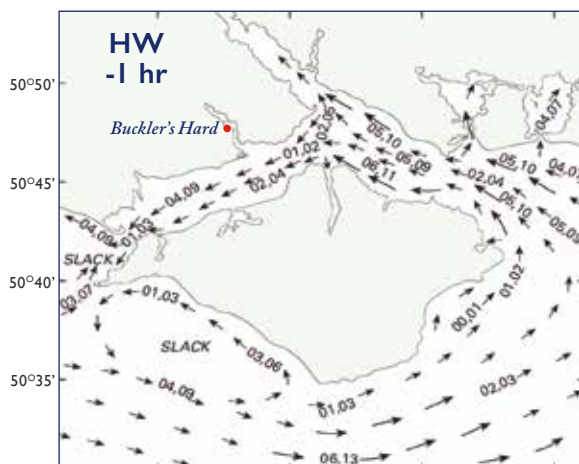
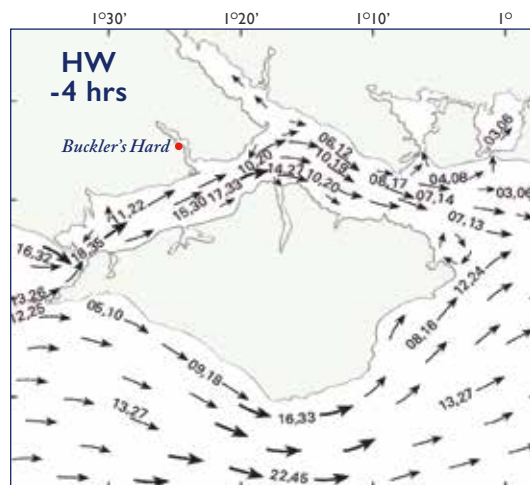
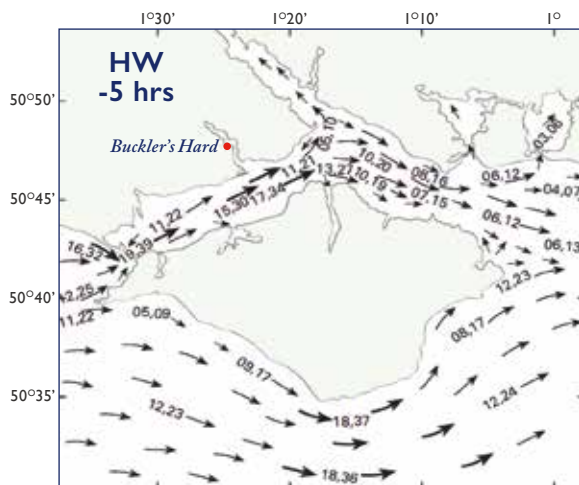


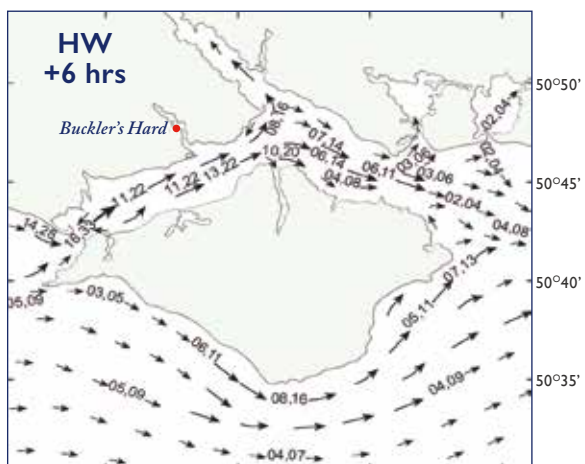
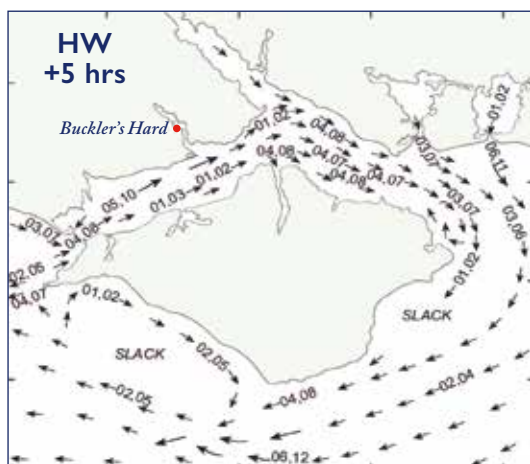
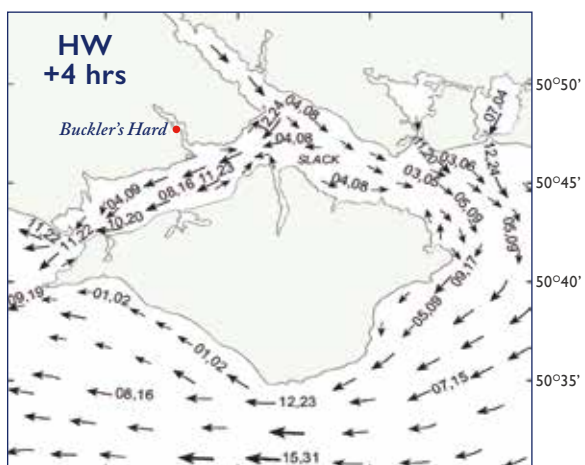
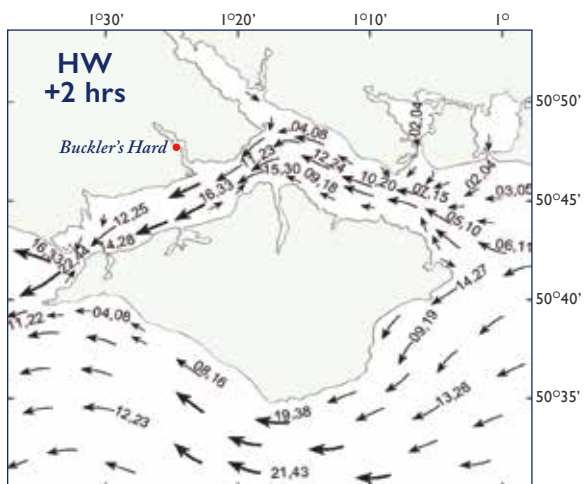
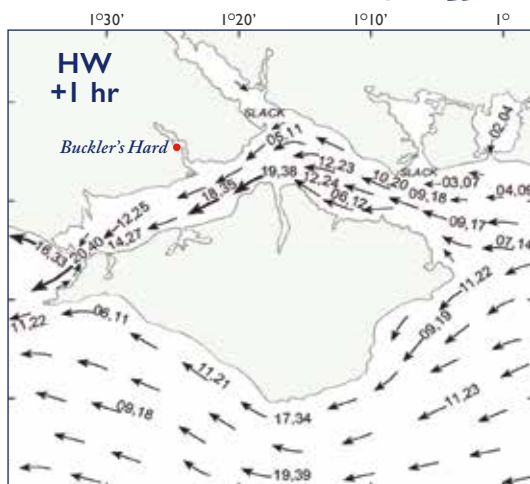
Royal Yacht
Squadron



Warsash
Sailing Club

SOLENT & ISLE OF WIGHT TIDAL STREAMS





High Water (HW) times refer to Portsmouth.



THINGS TO DO ASHORE

Staying on the Beaulieu River provides the perfect opportunity to hop ashore and explore the New Forest. Here are some suggestions of how you could spend a couple of hours or days.

PLACES TO VISIT

Explore the historic village of **Buckler's Hard**, just a short stroll from the marina. The Maritime Museum and historic cottages tell the story of the village and its important role in 18th century shipbuilding.

Just over two miles up-river is the village of **Beaulieu**, and home of the Beaulieu visitor attraction featuring the National Motor Museum, Palace House, Beaulieu Abbey and World of Top Gear. Beaulieu River visitors receive 20% off admission to both attractions—see over for further details.

Within a short sail you'll find the market town of Lymington. Take a dip in the open air sea water baths, browse the boutique shops or explore the popular street market held every Saturday.

The New Forest villages of Brockenhurst, Lyndhurst and Burley are within a 30 minute drive of Buckler's Hard, providing the opportunity to explore shops, cafes and restaurants.

WALKING

The New Forest is popular with walkers and has a variety of footpaths and routes to suit all abilities. For further information visit thenewforest.co.uk

CYCLING

Bicycles can be hired from the Harbour Office. Off-road cycling in the New Forest is permitted on a waymarked network of Forestry Commission tracks. A map of authorised routes can be downloaded from newforestnpa.gov.uk

BEACH DAYS

Lepe Country Park and Calshot are good spots to sit on the beach and watch the busy Solent, or within 45 minutes by car you can be sitting on the sandy beach at Mudeford.

EAT & DRINK

The Captain's Cabin Tea Rooms at the top of Buckler's Hard High Street serves hot and cold refreshments, including afternoon tea. The Master Builder's House Hotel offers casual and fine dining options and is situated within a five minute walk of the marina. Alternatively a leisurely 2¼ mile stroll into Beaulieu will provide further places to eat including cosy cafes, a pub and an award winning restaurant.



Fireworks, food festivals, sailing events and live entertainment, there is quite a variety of events to enjoy in the area between May and October.

Round the Island Race

30th May 2020

Swashbuckler Triathlon

31st May 2020

Poole Harbour Boat Show

12th–14th June 2020

Buckler's Hard Triathlon*

28th June 2020

New Forest Show

28th–30th July 2020

Art by the River*

1st–2nd August 2020

Wooden Boat Rally*

1st–2nd August 2020

Cowes Week

8th–15th August 2020

Lymington Seafood Festival

8th–9th August 2020

Soldiers & Skirmishes: 18th Century Weekend*

22nd–23rd August 2020

Southampton Boat Show

11th–20th September 2020

Southampton Sailing Week Regatta

14th–16th September 2020

Beaulieu Fireworks Spooktacular

31st October 2020

For more local events information, visit
thenewforest.co.uk



* at Buckler's Hard



BUCKLER'S HARD VILLAGE

At the heart of the Beaulieu River is Buckler's Hard, an 18th century village where ships were once built for Nelson's Navy.

Originally named 'Montagu Town' by John, 2nd Duke of Montagu, Buckler's Hard developed into a hive of shipbuilding activity in the late 1700s. With New Forest oak on the doorstep, it was ideally situated for such a task. The cottages that line the unusually wide street – where logs and planks were once piled – housed tradesmen and labourers.

Shipbuilding here went into decline shortly after the Napoleonic wars, but the village has remained unspoilt by the passage of time. In the Maritime Museum you will discover the fascinating story of the village, its residents and the ships they built, including Nelson's favourite warship HMS Agamemnon. Listen in to conversations between villagers of the past in the 18th century New Inn and follow the stories of the 19th and 20th century residents in an exhibition about village life.

Step through the doors of a worker's cottage as you go back in time to the 18th century to find out about the home life of the villagers and their families in historic cottage displays. One building, once the village school, is now a chapel which still holds regular services. Recent excavations of its cellar have suggested that the building may have been used by smugglers.

01590 616203
bucklershard.co.uk
Open daily from 10am



Treat yourself to a cream tea or tuck into a light lunch at the Captain's Cabin Tea Rooms. Also serving all-day snacks and hot drinks, the tea rooms open daily from 10am.

Pick up a loyalty card—buy six hot drinks and receive the next one free!





VISIT BEAULIEU

Just two miles upstream from the yacht harbour is Beaulieu, the ancestral seat of the Montagu family and home of the world-famous National Motor Museum.

The museum tells the story of motoring in Britain through its collection of over 280 vehicles from the earliest motor carriages through wartime vehicles to the cars you remember your parents driving. Nostalgic sights and sounds come alive in the 1930s country garage, while legendary Land Speed Record breakers and Formula One racers take you to the heart of an adrenaline-fuelled world.

A stroll through the picturesque grounds will lead you to Lord Montagu's home, Palace House, where costumed guides will welcome you. Upstairs, an exhibition of the needlework of Belinda, Lady Montagu will be evolving into a larger display of costumes worn by the family through the decades. Not far from Palace House are the remains of Beaulieu Abbey. Founded by King John in 1204, the conserved ruins of this once vast medieval abbey are an excellent place to wander.

From spring, there will be big fun for younger visitors with the opening of the Little Beaulieu adventure play area. Let your children's imaginations run wild as they storm up the bridge of the magical wooden palace, discover a trick bookcase, crawl through a secret tunnel, ride a zip wire and get a bird's-eye view from the treetop boardwalk as the monorail glides past.

Also new for 2020 is the Motoring in Miniature – the Toys of Your Childhood exhibition, which opens from Easter. See the shiny toys we gazed at in the toy shop window before spending hours 'driving' them across the living room carpet.

A ticket to Beaulieu includes the *World of Top Gear*, with exhibits from the BBC television series, and On Screen Cars with TV and film favourites including Del Boy's Reliant Regal, and the flying Ford Anglia from Harry Potter. Finally, don't miss the Secret Army exhibition which reveals the story behind Beaulieu's covert wartime role as a 'finishing school' for secret agents.

01590 612345 | beaulieu.co.uk | Open daily from 10am



**20% off
admission
to Beaulieu &
Buckler's
Hard***

*20% off applies to on-the-day admission prices to Beaulieu and Buckler's Hard on presentation of a Beaulieu River mooring receipt. The mooring receipt must be presented within 1 month of issue date.

WALKING FROM BUCKLER'S HARD TO BEAULIEU

Beaulieu village contains a variety of shops, including a grocery store, newsagent, art gallery, gift shops, tea rooms, coffee shops, chocolate studio, garden centre, florist and hairdresser.

The 2¼ mile footpath between Buckler's Hard and Beaulieu passes through the heart of the Beaulieu Estate and forms part of the Solent Way.

The gradual transition from woodland through tidal river-edge grassland into saltmarsh is rare in England and supports a wide range of plant and bird species, particularly wintering waders and wildfowl.

Please be aware that extreme tides and heavy rainfall may flood the footpath. Equinox tides are expected on 10-13 March, 8-10 April, 7-8 May, 21-22 August and 19 September.

1 Duke's Bath House

This small thatched cottage was built by George, Duke of Montagu, c1760 for his son who suffered from arthritis. Salt water was considered beneficial for sufferers of arthritis so a pond in the garden was filled with river water in which people could bathe.

2 Beaulieu River Boatyard

Hub of boating activity on the river of today.



3 Keeping Marsh

An open expanse of various salt tolerant plants. This mud bank is the holding area for dredgings from the river but is quickly being colonised by indigenous plant and animal life, notably shelduck, Canada geese, mallard, oystercatchers, redshank and curlew. A public bird hide is also located here, accessible from the footpath and suitable for wheelchair users. Please take care on the path between Keeping Marsh and Beaulieu River Marina as vehicular access is allowed.

4 Burnt Oak Copse

The trees here are predominantly oak dating from the early 19th century. Later these were supplemented by wild service, hazel, scots pine and beech with common privet, butcher's broom, holly and hawthorn providing shelter and food for game birds. Note the stunted tree growth at the river's edge, caused by poor drainage and the salt water from the river.

5 Riverside Walk

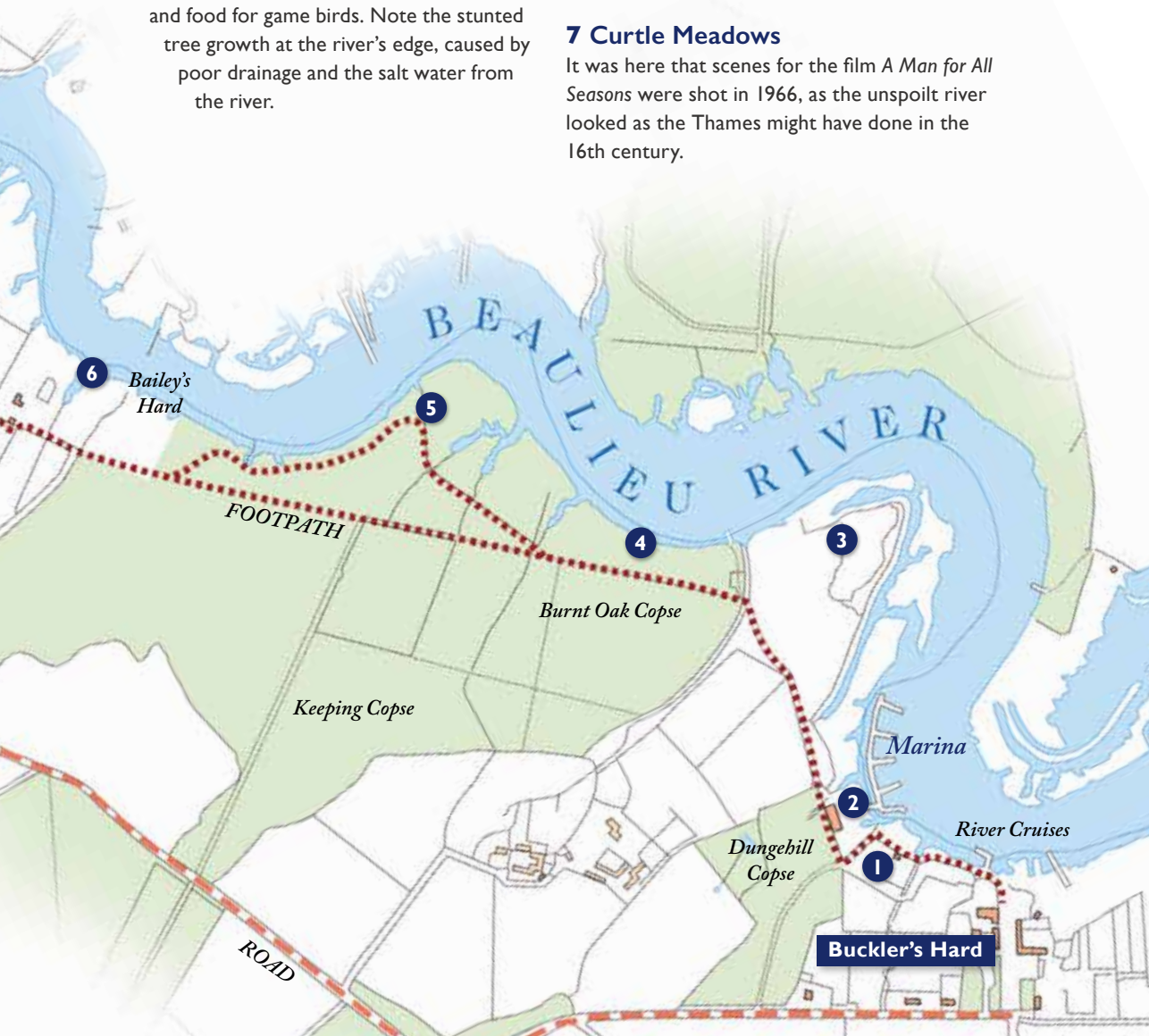
This alternative route gives closer views over the river, all of which is a designated National Nature Reserve. The flat area you see is known as a 'salting'. Grass species such as spartina have helped to stabilise the mud banks over time. The path passes some small creeks notable for plumed reeds, especially the yellow flag iris in summer. Also look for sea lavender, cord grass and sea purslane.

6 Bailey's Hard

The tall red brick chimney is that of the old estate brickworks which drew on the local deposits of clay. Built in 1790, it last produced bricks in 1935 and is now a private residence. It was here that *Salisbury*, the first naval vessel to be built on the river, was completed in 1698.

7 Curtle Meadows

It was here that scenes for the film *A Man for All Seasons* were shot in 1966, as the unspoilt river looked as the Thames might have done in the 16th century.



BUCKLER'S HARD TO LEPE FROM THE WATER

The lower reaches of the Beaulieu River are best seen from the water as they are not served by a footpath.

1 Gilbury Pier connecting to the Exbury Estate.

2 Mulberry Dock

This is the site of the old oyster beds created in the 1870s. During the Second World War, an experimental floating dock was built here, together with components for the Mulberry Harbour, used in the D-Day landings. Today, oysters are again being bred on the river, where the water is pure enough for a licence to be granted.

3 Fiddler's Reach

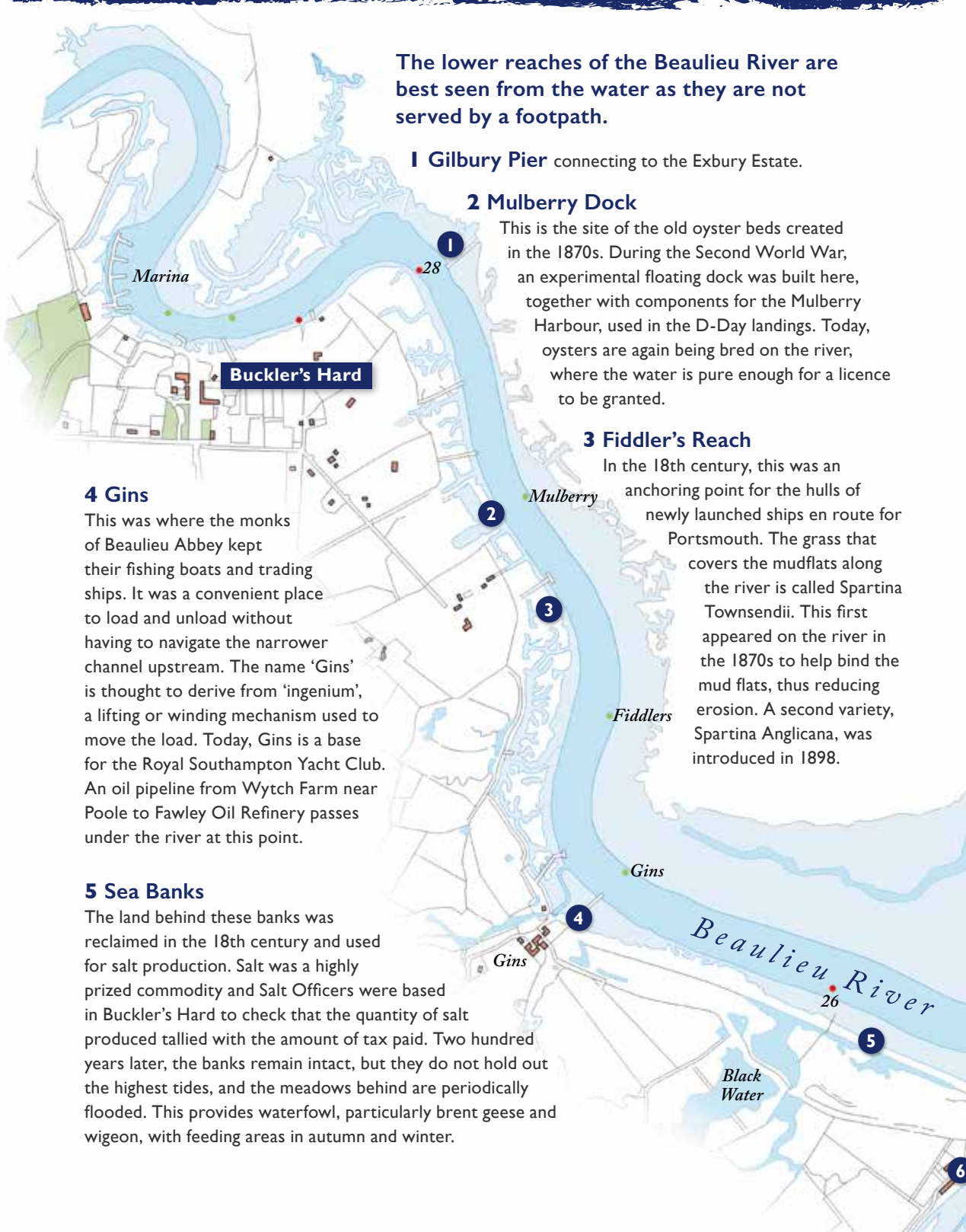
In the 18th century, this was an anchoring point for the hulls of newly launched ships en route for Portsmouth. The grass that covers the mudflats along the river is called *Spartina Townsendii*. This first appeared on the river in the 1870s to help bind the mud flats, thus reducing erosion. A second variety, *Spartina Anglica*, was introduced in 1898.

4 Gins

This was where the monks of Beaulieu Abbey kept their fishing boats and trading ships. It was a convenient place to load and unload without having to navigate the narrower channel upstream. The name 'Gins' is thought to derive from 'ingenium', a lifting or winding mechanism used to move the load. Today, Gins is a base for the Royal Southampton Yacht Club. An oil pipeline from Wytch Farm near Poole to Fawley Oil Refinery passes under the river at this point.

5 Sea Banks

The land behind these banks was reclaimed in the 18th century and used for salt production. Salt was a highly prized commodity and Salt Officers were based in Buckler's Hard to check that the quantity of salt produced tallied with the amount of tax paid. Two hundred years later, the banks remain intact, but they do not hold out the highest tides, and the meadows behind are periodically flooded. This provides waterfowl, particularly brent geese and wigeon, with feeding areas in autumn and winter.



6 Needs Ore Coastguard Cottages

Built in the 1860s for the Coastguard, who were at the forefront of the fight against smuggling, as well as defence and rescue. Officers were moved around from station to station to prevent them becoming established in the local community and susceptible to bribery and collusion. The Needs Ore Station closed in 1922 but the cottages continue to be occupied by tenants of the estate.

7 Needs Ore Point

This was where Charles Bull created his 'Bull's Run' in 1726–27 as a shortcut into the river from the Solent. It was closed by a Special Act of Parliament in 1986 to protect Gull Island from erosion. Needs Ore is the base of the Beaulieu River Sailing Club whose dinghy races take place in this part of the river.

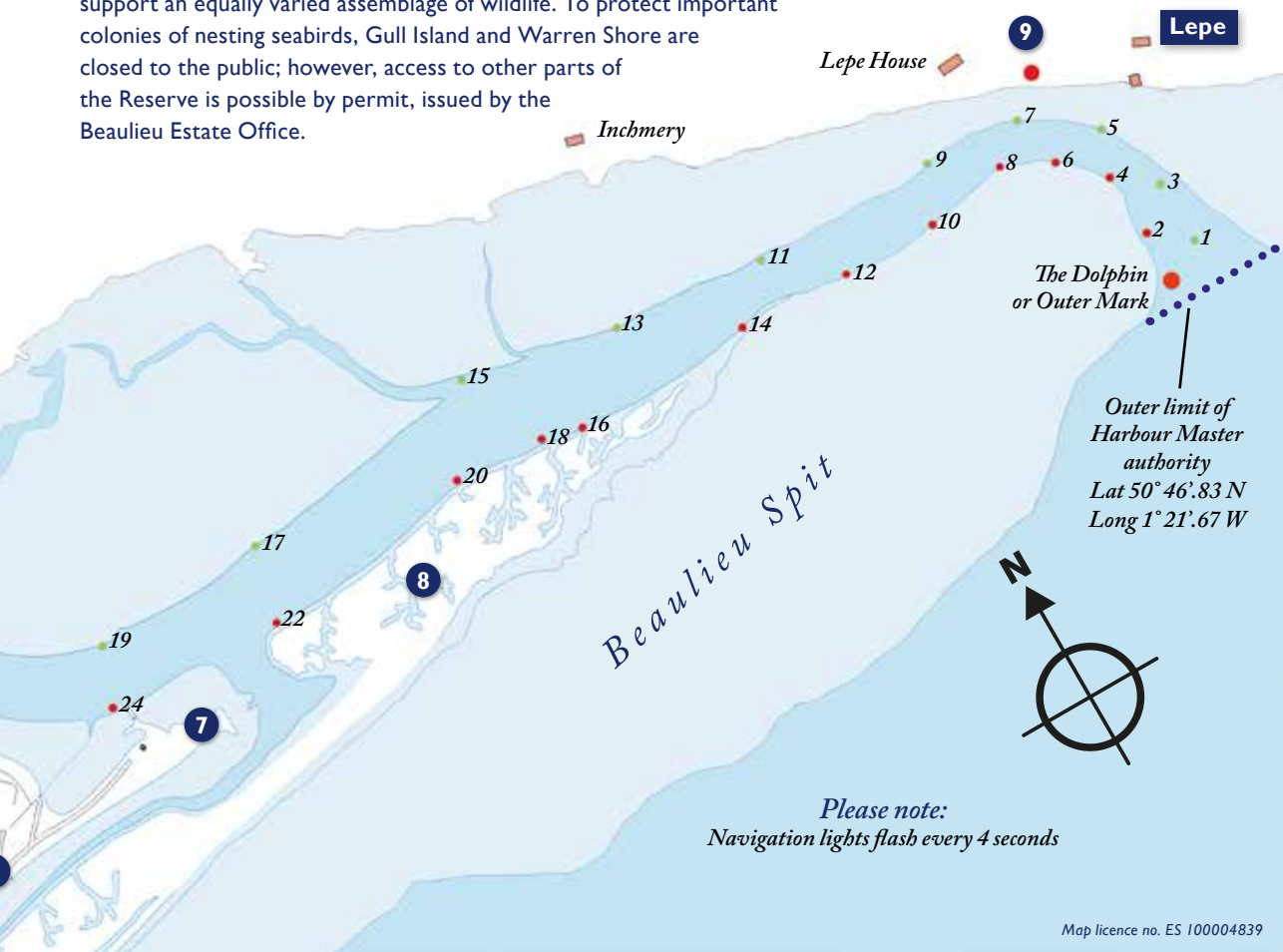
8 Gull Island

This is actually a spit and owes its name to the black-headed gulls which used to nest here in abundance, and after a period of time away are now nesting again. This forms part of the Special Protection Area (SPA) and is out of bounds to public.

9 Millennium Beacon

This miniature lighthouse serves as a day mark and contains a sectored light for guiding boats into the river at night. Its construction was kindly funded by many of the yachtsmen who use these waters.

The lands bordering the river contain an exceptional variety of habitats, which support an equally varied assemblage of wildlife. To protect important colonies of nesting seabirds, Gull Island and Warren Shore are closed to the public; however, access to other parts of the Reserve is possible by permit, issued by the Beaulieu Estate Office.



WOODEN BOATS AND THE BEAULIEU RIVER

The unparalleled atmosphere and beauty of Buckler's Hard could be said to have been born of wooden shipbuilding.

Its cottages (and of course chapel and pub) were laid alongside ships' keels as huge numbers of local trees were felled and painstakingly transported to be skilfully sculpted into great naval and other ships by local craftsmen. When completed these ships would be floated down river with the tide for final fitting out in Portsmouth.

Looking back, the lives of those who occupied the surviving cottages and their families seem to merge with the craftsmanship involved in creating wooden ships. Their stories, and the history of local shipbuilding, are vividly illustrated and brought to life by the Maritime Museum at Buckler's Hard. It is well worth a visit for some wonderful examples of the art of wooden boat model making.

The buildings of Buckler's Hard are now complemented by the Shipwrights' Workshop, a traditionally built replica of an 18th century wood building using local timber. A variety of projects and activities throughout the year seek to keep alive woodworking skills.

Happily the tides have not swept wooden boats completely away. The river and Buckler's Hard remain a natural home for beautiful wooden boats of all types: sail and motor yachts, dinghies and tenders, rowing boats and kayaks. Locally built Palace Quay wooden scows race regularly along with newer arrivals such as a gleaming cold-moulded scow built by a





Photographs by Peter Hetherington

student at the Lyme Regis Boat Building Academy. They are joined by traditionally built dinghies and dayboats, including matching Axe One Designs based at Gins Farm, and enduring classics such as Folkboats. Larger yachts regularly on the river include *Saunterer*, built in Cowes in 1900 to embark on a rich history including ownership by Captain 'Titus' Oates of Antarctic fame, and *Tomahawk*, an outstandingly beautiful Sparkman and Stephens yawl built in 1938. Motor yachts are well represented by Silver Sula (a Silvers yacht built in 1965), an echo of the days when Babycham creators, the Showering family, kept more than one Silver yacht on the river. Each year the river welcomes an increasing number of visiting wooden boats.

The Beaulieu River Wooden Boat Association (BRWBA) is made up of owners of these and other wooden boats of all kinds moored or kept on the river. It aims to encourage and support the ownership, mooring and good maintenance of wooden boats, the local provision of services and facilities for wooden boats, and social and educative events for members of the association and any others interested. BRWBA is involved in organising a gathering of wooden boats at Buckler's Hard on 1-2 August 2020, in conjunction with the Local Art Scene's event 'Art by the River'. This will be a significant showcase for local artists and arts and crafts, all with a marine theme.

Anyone interested in contacting the association can do so via the Harbour Office at Buckler's Hard.

James Evans

Owner of SY *Mirelle*



2019 PHOTO COMPETITION





Winner: James Williamson

Outdoor Adventures

FOR ALL



Canoeing & Kayaking
Archery
Battlefield LIVE
Group Activities
Cycle Hire and more!

BOOK
ONLINE



Battlefield LIVE

FIND US IN BEAULIEU | 01590 612377
NEWFORESTACTIVITIES.CO.UK



The Royal Southampton Yacht Club welcomes visitors.
Our Gins Clubhouse is the perfect place to unwind with a delicious meal or
refreshing drink, and the most amazing views on the Beaulieu River.
For reservations and pontoon moorings call 023 8022 3352



Eat
Drink
Relax

Ch 77 Sea Echo
www.rsyc.org.uk
@rsycgins

A vibrant photograph of a forest clearing. In the foreground, there are large, green, heart-shaped leaves of plants. A path of grass and small stones leads from the center of the frame towards a bright, open area in the distance where a river or lake is visible. The trees are tall and have dense green foliage, with sunlight filtering through the canopy.

2020 PHOTO COMPETITION

We would like to thank everyone who entered the 2019 photographic competition and to congratulate the winner, James Williamson.

We now invite entries for the 2020 competition. This year, we'd like entrants to capture what makes the Beaulieu River special to you. The winning photographer will win a cash prize of £200.

For more information, visit beaulieuriver.co.uk/photo-competition

Picture by Richard Holgate, shortlisted for winning the 2019 competition.



Exbury
GARDENS
& Steam Railway

Spectacular 200-acre woodland garden and narrow-gauge steam railway located on the edge of the Beaulieu River.

£12.50 for adults, £4.50 for children

023 8089 1203 | www.exbury.co.uk
New Forest, SO45 1AZ

Enjoy award winning eats with undisturbed views of the Beaulieu River.

Book our Riverview restaurant for a fine dining experience, or walk into our Yachtsman's Bar & Garden for impromptu food - open every day from 12 noon – 9 pm

View our menus online at themasterbuilders.co.uk
follow @themasterbuildersuk on Instagram



THE MASTER BUILDER'S
at Buckler's Hard

Buckler's Hard, Beaulieu, SO42 7XB

Tel: 01590 616 253



PROTECTION OF WILDLIFE

The Beaulieu River is a Site of Special Scientific Interest and forms part of the North Solent National Nature Reserve. The river and shoreline form an internationally protected habitat for birds throughout the year. Disturbance in any form has a detrimental impact on their survival.

Dogs are not permitted access to these areas under any circumstances. Landing is only permitted at designated points upstream of the RSYC at Gins.

Your co-operation would be much appreciated.



SEALS OF THE BEAULIEU RIVER

Charming, playful and occasionally cheeky, the seals on the Beaulieu River made a splash on social media in 2019 when a seal pup was spotted hitching a lift on a visiting yacht.

If you spot one of the seals on the river, we'd love to see your photos and videos. Drop us an email or get in touch via any of our social media channels:



@beaulieuriver



@BeaulieuRiver



@beaulieuriver

A brief guide to seal spotting

The Solent is home to two species of seal which can be difficult to tell apart from a distance.

The common seal (also known as the harbour seal) is the smaller species. It has a round head, a more concave forehead and a short muzzle (similar to that of a dog) and its nostrils are V-shaped.

The grey seal (pictured above) is larger and has a 'Roman nose' profile and an elongated muzzle without a distinct forehead. It has parallel nostrils.

Please remember that seals are wild animals and their wellbeing is paramount. Keep your distance and if a seal approaches you, let it decide how close to get. Please don't touch it. If you are concerned about the welfare of a marine mammal, contact British Divers Marine Life Rescue at:

01825 765546

Right: Picture of a Grey Seal by Richard Holgate, shortlisted for winning the 2019 photographic competition.





Help create a Wilder Solent

Our waters are home to amazing species like cuttlefish and seahorses, but are under pressure from human activity. We need people like you to help us care for our marine wildlife; even small actions can make a big difference.

www.hiwwt.org.uk/WilderSolent



**Hampshire &
Isle of Wight**
Wildlife Trust



MOBILE MARINE ENGINEER

**Whether you own a 6ft tender or a 60ft luxury craft, Power or sail,
we can cover most of your mechanical needs.**

All makes and models of inboard
and outboard engines

Stern drives

Basic Marine Plumbing

Basic servicing to full rebuilds

Stern gear; propellers, prop
shafts, cutlass bearings.

Replacing skin fittings and
seacocks

Re-powering and maintenance
packages

Installations and Servicing of
marine generators.

Installation of holding tanks and
toilet systems.

**If you would just like to discuss the options that are available to you,
Please do not hesitate to contact us.**

Call Colin Diffey on **07738 915012**
info@riverbankmarineservices.co.uk
www.riverbankmarineservices.co.uk



Riverbank
Marine Services



LYMINGTON HARBOUR



"Lymington River and its approaches offer a safe haven for yachtsmen. We have a beautiful river and harbour area and we pride ourselves on offering a friendly and professional service to all."

Ryan Willegers, Harbour Master

ONLY A STEP AWAY...

Charming Harbour &
Beautiful Georgian Town

New Walk Ashore &
Finger Berths at Town Quay

New Forest Walks &
Cycling

Fantastic Dining
Experiences

LET'S GET SOCIAL



Find out more:
WWW.LYMINGTONHARBOUR.CO.UK
INFO@LYMINGTONHARBOUR.CO.UK
01590 672014



SERVICE & REPAIRS

Inboard engine servicing,
repairs and replacement

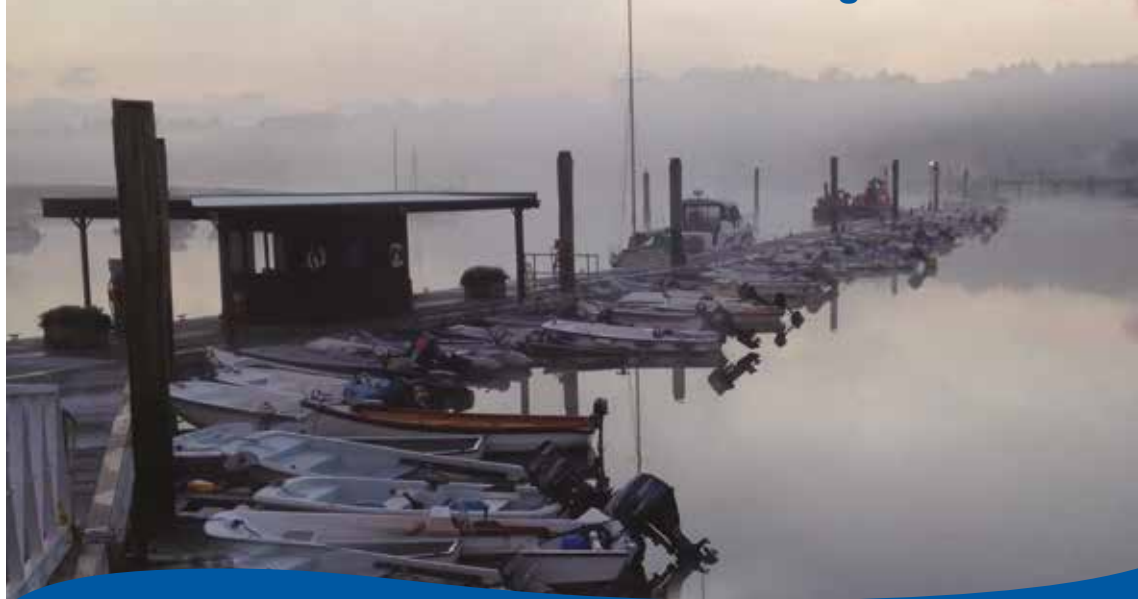
Outboard motor service and repair

Dinghy & Trailer service and repair

New and used engine sales & parts

Collections, delivery and storage available

New and used outboards and dinghies



Service & Repair

Buckler's Hard, Beaulieu, SO42 7XB

info@bhgservice.co.uk

www.bhgservice.co.uk

01590 616479