



BEAULIEU RIVER

BUCKLER'S HARD YACHT HARBOUR

The natural haven where the New Forest meets the Solent



2022 TIDE TIMES & INFORMATION

S.D. ELECTRONICS

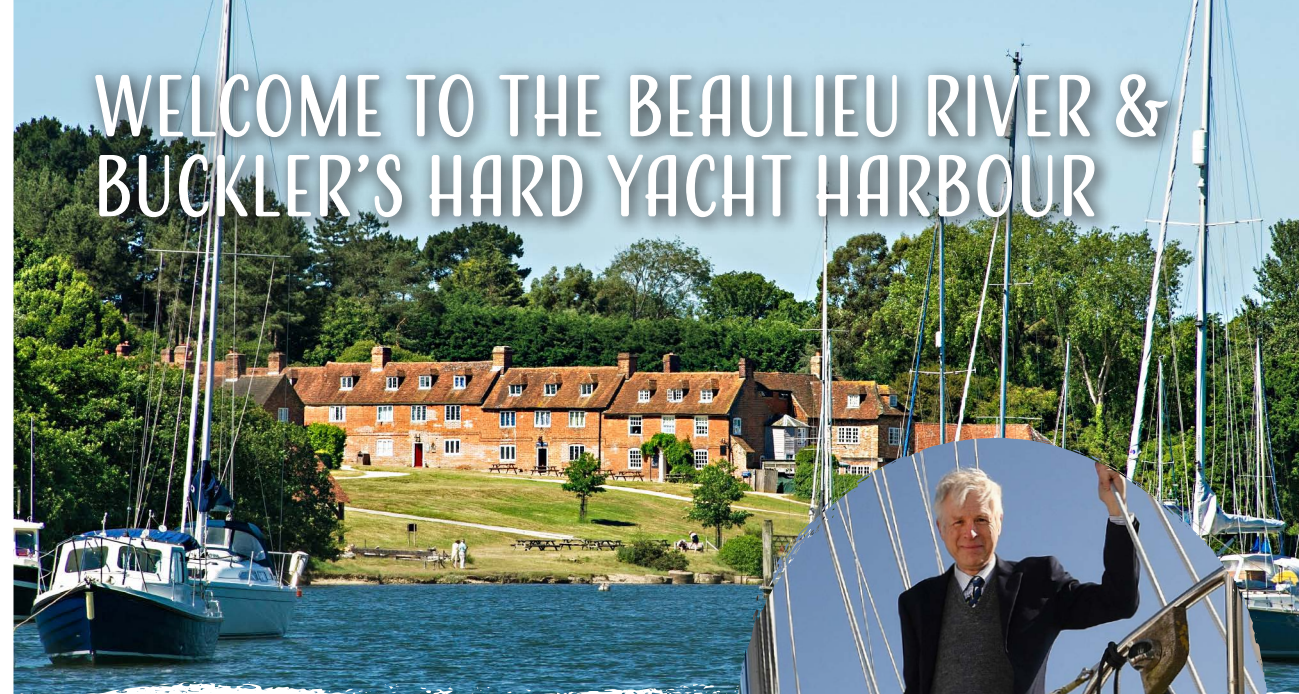
MR STEPHEN EASTAUGH - MARINE ELECTRONICS ENGINEER

07551 949083 • eastaugh.pipistrelle@talktalk.net
7 Park Lane, Alderholt, Fordingbridge, Dorset, SP6 3AJ



INSTALLATION • REPAIR AND SERVICING OF ELECTRICAL SYSTEMS • WINTER REFURBISHMENTS
CHECKING AND CONNECTING ELECTRONICS ON LAUNCH • CHECKING BATTERIES
REPAIR OF ELECTRIC WINCHES AND BOW THRUSTER • SERVICING MASTHEAD UNITS
ALTERNATOR CHECKS AND STARTER MOTOR REPAIRS

WELCOME TO THE BEAULIEU RIVER & BUCKLER'S HARD YACHT HARBOUR



Welcome to the Beaulieu River, which forms the south-eastern edge of the Beaulieu Estate and is one of the few privately-owned estuaries in the world.

It is an ideal place from which to sail in the Solent or visit for a short stay and, if you seek the pleasures of the countryside, the Beaulieu Estate and New Forest National Park are on your doorstep.

The river has been in the custodianship of my family since 1538, when Henry VIII closed Beaulieu Abbey and sold its lands to my ancestor Thomas Wriothesley. The monks had settled at Beaulieu partly because the river ensured easy transit between the Abbey and points further afield, and so it remains today.

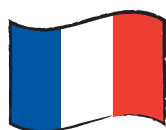
Whilst the river retains many of the qualities it has had for centuries, the facilities continue to change as we seek to meet the expectations of our mooring-holders and visitors. With the marina reconfiguration completed in time for the yacht harbour's 50th anniversary in 2021, we are now turning our attention to improved systems for the launching, lifting, moving and storage of boats. I hope these will meet with your approval.

Finally, my thanks to all those who submitted pictures for the 2021 photographic competition. We received another good raft of entries from which I have selected a number of striking images to feature in this booklet.

Montagu of Beaulieu



BIENVENUE / WELKOM / WILLKOMMEN



Bienvenue au port de plaisance de Buckler's Hard, à Beaulieu River.

N'hésitez pas à nous contacter si vous avez besoin d'aide. Des informations plus détaillées en français vous attendent sur notre site Internet. Nous vous souhaitons un agréable séjour.



Welkom bij de jachthaven van Buckler's Hard in de Beaulieu River.

Neem contact met ons op als u hulp nodig heeft. Er is meer informatie in het Nederlands beschikbaar op onze website. We hopen dat u van uw verblijf bij ons geniet.



Willkommen zu Buckler's Hard Yacht Harbour am Beaulieu River.

Wenn Sie unsere Unterstützung benötigen, helfen wir Ihnen gerne weiter. Weitere Informationen auf Deutsch finden Sie auf unserer Website. Wir hoffen, daß Sie Ihren Aufenthalt bei uns genießen.

MEET THE TEAM

We pride ourselves on providing a professional and friendly service to all visitors, with a personal touch that is sometimes missing from larger marinas. We've worked hard to create a safe environment for everyone in these uncertain times, but even if we need to keep our distance we will always welcome you with a warm hello and a smile. Whether you're here for a few hours, a day or longer, please let us know if we can help with anything.



Wendy Stowe
Harbour Master

Buckler's Hard Yacht Harbour | Beaulieu | Hampshire | SO42 7XB
01590 616200 | harbour.office@beaulieu.co.uk | beaulieuriver.co.uk
VHF Channel 68 "Beaulieu River Radio"



SIR BEN AINSLIE SAILS TO BUCKLER'S HARD YACHT HARBOUR

On Saturday 14th August 2021, Olympic yachtsman Sir Ben Ainslie swapped his race boat for a Scow to sail up the Beaulieu River and commemorate the 50th anniversary of Buckler's Hard Yacht Harbour after its £2m redevelopment.

More than 800 berth and mooring-holders gathered in the sunshine to welcome Sir Ben, who won medals at five consecutive Olympics from 1996, making him the most successful sailor in Olympic history. He was escorted by Hon Mary Montagu-Scott, Commodore of the Beaulieu River Sailing Club. They sailed to the event as part of a flotilla from the Beaulieu River Sailing Club, which was formed 90 years ago under the patronage of Lord Montagu's grandmother Pearl.

While the fleet continued with its race, Sir Ben was cheered on stage where Lord Montagu presented him with a certificate granting him the honorary freedom of the Beaulieu River. They were joined by round-the-world yachtsman Sir Chay Blyth CBE BEM, who was granted the same freedom by Lord Montagu's father at the marina opening in 1971.

With the Tokyo Olympic Games fresh in the minds of many, Lord Montagu expressed his delight in receiving Sir Ben at Buckler's Hard. "A visit by a leading yachtsman really puts the seal of approval on any river offering new services to the sailing fraternity." Mindful that Sir Ben was a resident of the Isle of Wight and sailed in the Solent, Lord Montagu suggested that a safe harbour in the Beaulieu River might occasionally be useful between races, something he could be assured of with his newly-granted freedom.

Sir Ben Ainslie responded: "Sailing here with Mary just reminded me of what a wonderful sport sailing is and how lucky we are to be able to get out on the water in such beautiful surroundings as the Beaulieu River. I am not quite sure how we'd get on coming up the Beaulieu River in an America's Cup 75-footer that does 50 knots of speed but one day we may give it a shout. I enjoyed sailing with Mary, learning more about the Beaulieu River and Buckler's Hard and being back in a small Scow without the pressure of competing at speed. In years to come, I hope to have more time to use the freedom of the river. It is a huge honour to have been given this when the two previous sailors to be granted it were Sir Chay Blyth and Sir Francis Chichester."



When Sir Chay Blyth came to open the Buckler's Hard Yacht Harbour in 1971, he had only recently completed his great voyage in the 59-foot boat British Steel, making him the first person to sail single-handed, non-stop, westwards around the world. "It is hard to believe that I came here 50 years ago as a young boy and have now returned as an old man," Sir Chay reflected. "Nothing has changed really – it is still a fabulous place to come to."

Sir Ben then went on to judge the best dressed boat competition. Resisting offers of champagne from the competitors, he made Kim Flury the winner, whose boat, pictured below, was dressed in a *Pirates of the Caribbean* theme, complete with pirate-attired crew. The day of celebration included traditional regatta fun and games, including a crabbing competition and rowing and swimming challenges for prizes which were awarded later in the day.





The Beaulieu River is just one of the many rivers, estuaries and harbours which form the unique maritime environment of the Solent.

Since 1956, the Solent Protection Society has been campaigning to ensure the ecological and environmental wellbeing and wise management of the wider Solent area, its natural beauty and amenities, so that these may continue to be enjoyed by present and future generations.

Originally formed to fight plans for an oil refinery on the Hamble shore and a nuclear power station on the Newtown River, the Society now focuses on the impacts of pollution and climate change on the Solent, while monitoring the many changes to local and national planning policies and development applications which could damage this unique coastal environment and threaten the livelihoods of its residents, businesses and visitors.

For further information or to join the Society, please visit our website at the address below or contact us via email: secretary@solentprotection.org



Solent Protection Society

www.solentprotection.org

Charitable Incorporated Organisation

Registration number 1154317

The last few years have seen Buckler's Hard Yacht Harbour embark upon a programme of improvements to help the marina keep pace with modern demands. Its top rating of 5 Gold Anchors by the Yacht Harbour Association is testament to this. Building on this success, further upgrades to the infrastructure will be taking place during 2022, aimed at improving the services offered to customers.

The recently acquired Roodberg boat-mover should increase the efficiency of our boat lifting service and allow better use of the space within the boatyard. The narrower, more manoeuvrable boat-mover can operate in more confined areas than the boat hoist and is designed to work with specially-built cradles that are also being phased in. As the Roodberg can lift and move boats in these cradles, it will be much easier to reposition boats within the yard. The new system will increase storage capacity by around 20-25%, which should make it possible to accommodate all vessels at the time of year of their owners' choosing.

A telehandler with a 17-metre reach has also arrived. This will be ideal for stepping and un-stepping masts on yachts and, with a 4-ton lifting capability, will also be suitable for lifting and refitting engines.

Slipway users will benefit from the installation of a launching pontoon alongside the slipway.

Finally, the services we provide are, of course, dependent on suitably experienced staff members. In this respect, we are pleased to welcome Rob Seymour who has joined Paul Bishop and Dave Smith on the boatyard team.

COOKS MARITIME CRAFTSMEN & YACHT SURVEYS

Boat Builder / Surveyor

Fully Qualified and Insured. Boat Builder and Marine Surveyor

Providing High Quality Craftsmanship

A wide range of repairs and re-fits carried out and craft maintained, from internal joinery, GRP, and timber repairs to boat washing, antifouling and painting

Local workshop at Lymington Yacht Haven

07952 955906 / 01590 675521

cooksmcraftsmen@gmail.com

www.cooksmaritimesurveys.com



FINDING US

BY BOAT

The Beaulieu River is centrally located on the Solent. When approaching from the east, keep the lit south cardinal to starboard off Stone Point and steer to the vicinity of a lit, yellow special buoy close to the bearing to run in on. The bearing to run in on is 324° guided by the transit marks, the front mark is port post No. 2 and the back mark is Lepe House.

The Buckler's Hard Yacht Harbour is a pleasant 3.5 nautical mile cruise upstream. Please report to the Harbour Master's Office when the Marina is in sight using VHF channel 68 and call sign *Beaulieu River Radio*.

BY CAR

We are 25 minutes from the M27 with easy access to the main south coast cities, the M3 and London. There is ample parking for customers. Find us via satnav using SO42 7XB and enjoy your journey through the New Forest. Please call the Harbour Office on arrival to receive the access code for the barrier.

BY TRAIN

The closest main line railway station is eight miles away in Brockenhurst, with a regular service running between London Waterloo and Weymouth. A taxi from Brockenhurst to Buckler's Hard Yacht Harbour will take approximately 20 minutes.

SAILING DISTANCES:

Cowes.....	2.6 Nm
Lymington.....	6 Nm
Hamble.....	5.5 Nm
Portsmouth.....	10 Nm
Chichester	18 Nm
Poole.....	25 Nm
Weymouth.....	45 Nm

SCAN THE QR CODE BELOW
TO WATCH A VIDEO ON
NAVIGATING THE RIVER:



Available Courses

Tel: 07834 73 33 23

Visit: www.jollyrogersailing.co.uk

Day Skipper Theory
from £349

A comprehensive introduction to cruising for inexperienced skippers. Equips you with enough knowledge to navigate around familiar waters by day.

Yachtmaster & Coastal Theory
from £379

Advanced training for more experienced skippers building on the Day Skipper course

Essential Navigation & Seamanship
from £149

A great introduction to navigation and safety awareness for new or inexperienced skippers and crew.

Own Boat Tuition
£POA

You may be new to sailing and wish to learn the basics, or you may want to further your knowledge of boat operations bespoke to your vessel.

Short Range radio Course (VHF)
from £99

Enabling you to gain the minimum required legal licence to operate VHF & DSC on any vessel.

First Aid
from £89

A one day course designed to take in many regular first aid topics. This is an essential course for anybody venturing to remote locations on the seas.

MARINA LAYOUT & FACILITIES



I Marina Reception & Chandlery

Open from 8am, 7 days a week. Stock includes a good range of chandlery items, bottled gas and a small selection of groceries including fresh milk, bread, confectionery, ice, alcohol and newspapers at weekends.

01590 616200 | harbour.office@beaulieu.co.uk
chandlery@beaulieu.co.uk

2 Engineering Workshop

On-site marine engineer Alex Cobb offers inboard and outboard engine service and repair.

07717 155871 | info@marine-tec.co.uk

3 Wash Down Area

4 Lavatories, Showers and Launderette

Open at all times* for use by berth-holders and visitors. Includes a fully-equipped coin-operated launderette. Outside shower and sinks available. Facilities for disabled visitors.

*please note that showers are closed at night for cleaning

5 BH Boat Sales

Sole-appointed yacht brokers for the Beaulieu River.
 01590 616316 | sales@bhboatsales.com

6 Rubbish Disposal

Skips and recycling bins are located within the main refuse compound in the boatyard.

7 Event Area

Location for pop-up catering units which will be open every weekend from Easter to September.

8 Pump-out point

Operated by a token which can be collected from the marina reception.

9 Fuel and Water

Fuel and fresh water are available from the fuel pontoon, which is open until 4.30pm (4pm winter). Fresh water is also available in the marina.

10 Master Builder's House Hotel

Enjoy a meal in the Riverside Restaurant. The hotel offers 26 guest rooms, some with river views. Advance booking recommended.

01590 616253 | themasterbuilders.co.uk

11 The Captain's Table

Café serving hot and cold refreshments.
 01590 616293

12 Buckler's Hard Visitor Centre and Museum

Learn about the 18th century village where ships for Nelson's Navy were built. Open daily from 10am.

Visitors with Disabilities

If you need assistance, please do not hesitate to contact one of the river staff. Please note: ramp access to the marina is steep at low tide.



Photo by Abi Kavanagh, shortlisted for the 2021 photographic competition.



ADVICE

SALES

INSTALLATION

SERVICE

Lymington • +44(0) 1590 671144 • lymington@greenham-regis.com Southampton • +44(0) 2380 636555 • sales@greenham-regis.com

Chichester • +44(0) 1243 511070 • sales@greenham-regis.com

Raymarine GARMIN FURUNO ICOM B&G SIMRAD
www.greenham-regis.com

Buckler's Hard Museum

20% off

Museum admission for all
Marina & River visitors*
(*mooring receipt required)



Visit the Buckler's Hard Visitor Centre at the top of the high street to discover the fascinating story of the village, its residents and the ships they built.

Find out more at: www.bucklershard.co.uk

WASTE & RECYCLING

The Beaulieu River is a beautiful place. Please help us keep it this way by following our waste and recycling guidelines.

Waste and recycling facilities can be found adjacent to the chandlery. Please make sure you use the correct bin. Contamination reduces the number of items we can recycle and may cause health and safety problems. If you are in doubt or need assistance, please do not hesitate to ask one of the harbour staff.

Recycling

Bright blue bins with mixed recycling labels should be used for cans, aerosols, plastic bottles, paper and card.

Green bins should be used for glass bottles.

General waste

Non-recyclable waste should go into the bins labelled general refuse. All waste must be compactable and must not be hazardous.

Pump-out service

There is a pump-out facility near the fuel berth. Please ask at the chandlery/marina reception for details before operating.

Oil, paint cans, fuel & oil filters, engine batteries & anti-freeze

Please ask harbour staff for details of how to deal with these.

Flares

Please contact the local Maritime Rescue Coordination Centre on 02392 552100.

International food waste

If arriving from outside the UK, any food waste must be taken home. Alternatively, please speak to a member of staff. Do not dispose of in bins.

Hazardous waste

We are unable to accept hazardous waste including, though not limited to, fuel, liquid chemicals, fuel tanks, any absorbent material used to clear oil, fuel or paint spillages, compressed gasses or gas containers, clinical waste, mattresses, tyres.

The nearest hazardous waste disposal service is in Marchwood.

Please note that the following may not be discharged into the river:

- black water
- oil/oily residue
- waste
- plastics
- food
- other pollutants

Photo by Richard Holgate (above), shortlisted for the 2021 photographic competition.

THE SOLENT CELLAR RETURNS FOR 2022

The Solent Cellar, Lymington's independent wine merchant, will be returning for 2022, hosting a pop-up bar on the water's edge at Buckler's Hard Yacht Harbour throughout the summer.

The team will be showcasing a handpicked selection of reds, whites and rosés. Each week will also feature a different beer from a local brewery as well as a local craft gin, plus plenty of Pimm's. A selection of soft drinks and bar snacks will also be available.

The bar will be open on Fridays and Saturdays throughout the summer, starting from the beginning of the Easter holidays and running until the end of September. The team look forward to welcoming visiting sailors as well as permanent berth-holders.

Opening times:

Fridays: 4pm – sunset

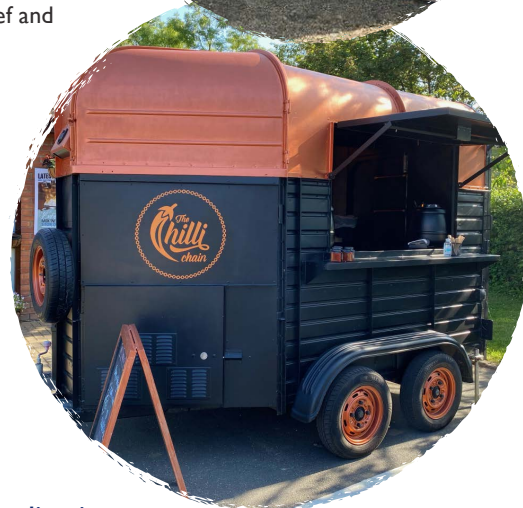
Saturdays: 1pm – sunset

Keep a look-out for the blue beach hut in the boatyard opposite the harbour office. Outdoor seating will be available (no reservations). The bar will only accept card payment.

The Chilli Chain will also be returning, offering freshly homemade chilli and nachos every Friday throughout the summer. Beef and vegan options will also be available.

JB's Fish and Chips will be making appearances on Saturdays. Burgers, battered sausages and homemade sauces are on the menu. Orders must be placed in advance by phoning the harbour office by midday on Friday.

We'll also be looking to host a number of other independent food and drink caterers throughout 2022. Keep an eye out on our website and social media pages for updates and announcements.



The chandlery building is also home to the marina reception, making it the one-stop shop for all your boating supplies and queries. Do pop in and see the team - they're always happy to help.

Product lines include rope, anti-fouling products, stainless steel hardware, Calor and camping gas. Groceries include fresh milk, bread, orange juice, confectionery, wine/beer, basic food and drinks and toiletries. Newspapers are available at weekends during the season and can be enjoyed at the seating area with a hot drink or ice cream. Your four-legged friends will also be wagging their tails with delight at the dog ice cream and other tasty treats, canine life jackets and eco-friendly toys!

If you'd like to order an item not in stock, please speak to one of the team.

Open 7 days a week

chandlery@beaulieu.co.uk | 01590 616200



JOIN US

Experience the beauty and tranquillity of the Beaulieu River and visit us either for a day, overnight or perhaps even longer.

With a five Gold Anchors accreditation, the Buckler's Hard Yacht Harbour offers a sheltered setting for a range of fully-serviced marina berths, while the scenic reaches of the Beaulieu River provide a peaceful setting for river moorings.



Yachts of up to 20m can be comfortably accommodated and the on-site boatyard facilitates repair services, as well as lift-out, washdown and storage services all year round.

As well as a friendly service from experienced staff, **permanent berth and mooring-holders** can enjoy the following benefits:

- ⚓ 30 days' free storage and 10% off lift and launch throughout the year.
- ⚓ 10% off fuel.
- ⚓ Reciprocal berthing arrangements with other marinas through membership of TransEurope.
- ⚓ Free WiFi throughout the marina.
- ⚓ Ample on-site parking.
- ⚓ CCTV and out-of-hours on-site security.
- ⚓ Conveniently located boatyard services.
- ⚓ Special seasonal offers on boatyard services.
- ⚓ Recently refurbished lavatories, showers and a launderette.
- ⚓ Fuel jetty.
- ⚓ Pump-out service.
- ⚓ On-site chandlery/grocery shop, open seven days a week.
- ⚓ Professional on-site yacht broker.
- ⚓ Social events for mooring holders.
- ⚓ Pop-up bars and food vendors every weekend from Easter through to the end of September.
- ⚓ Free entry to Buckler's Hard Maritime Museum for mooring-holders.
- ⚓ Unlimited family tickets to the Beaulieu visitor attraction (family = up to 3 children and 2 adults).
- ⚓ 10% discount on food and drink available at The Master Builder's House Hotel and restaurant with the Beaulieu River Privilege Card.

VISITING

Our new visitor berths on the South Visitor Pontoons offer convenient walk-ashore positions, electricity and water supply. Please report to the Marina Reception upon arrival. The Marina Reception can also be contacted via VHF channel 68 Beaulieu River Radio or via telephone 01590 616200.

To avoid disappointment, we recommend that visitor walk-ashore berths are booked with advance payment by emailing the Harbour Office. River moorings are available on a first come, first served basis; please remember that a dinghy will be required to get ashore.

Rates from 1st April to the end of October 2022 for visiting yachts, per vessel, per night. Subject to availability.

	Overnight	Short Stay*
Walk Ashore (includes electricity)	£4.50 per metre per night	£2.25 per metre
River	£2.50 per metre per night †	£1.50 per metre
Anchorage†	£10.00 per boat	£8.00 per boat

* Short stays are a maximum of 4 hours with the overnight fee applying after 3:30pm. Overnight visitors should vacate their mooring/berth by midday. Additional visitor parking is available at £5 per day.

† To protect the sensitive habitat of the river, anchoring is only permitted between piles 20 and 22. Does not include use of marina facilities.

PLEASE BE AWARE
OF CROSS CURRENTS
WHILST BERTHING.



STAYING SAFE ON THE RIVER

The Beaulieu River team work hard to ensure all visitors and vessels remain safe when using the river. Please help us to achieve this by observing the following safety rules.

Obligations

- wear lifejackets.
- keep your speed below the maximum of 5 knots to ensure minimum wash throughout the river.
- keep to the starboard side of fairway.
- wear kill cords where fitted.
- ensure dogs are kept on leads at all times.

Not permitted

- swimming, jet-skiing, water-skiing or board sailing.
- securing dogs or children to canoes or kayaks.
- mooring onto navigation buoys, beacons or marks.
- underwater diving activities without permission from the Harbour Master.
- operating your vessel whilst intoxicated.
- the flying of drones.

When arriving

- from outside the UK you must call the National Yachtline (0300 123 20212) on arrival.
- you must also complete a passenger locator form at www.gov.uk/provide-journey-contact-details-before-travel-uk.
- If you have animals on board, you must have the correct paperwork from an authorised port of entry before entering the UK.
- all commercial vessels, vessels over 20m, and vessels not under command, restricted in ability to manoeuvre, or towing another vessel or structure, are requested to give notice of their movements by calling Beaulieu River Radio on VHF channel 68.

Man overboard

- in a 'man overboard' situation, call for help and then try to assist but without putting yourself in danger. There are emergency ladders on all marina and river pontoons. Call channel 68.

Slipway

- pre-book your launch using our online booking system at beaulieueriver.co.uk.
- check weather and tidal conditions. We advise against launching and recovering in the hours of darkness unless you are familiar with the slipway.
- the slipway should not be used 2 hours either side of low water due to steep drop-off (other than for SUPs/kayaks).
- do not block access; rig your boat away from the slipway.
- be aware of pedestrians and other users of the slipway.
- attach a safety line to your trailer.
- never stand behind a boat whilst it is being launched or recovered.
- if you are going to leave your car attached to the trailer whilst launching, switch off the engine, leave in gear, and make sure the handbrake is fully applied.
- when parking a boat and trailer in the dinghy park, check that both are secure.
- pontoons are only to be used for the launching and recovery of vessels.

Pontoon

- take care on the pontoons when it is wet, frosty or icy.

The marina is manned from 08:00–20:30 in summer and 08:00–16:30 in winter, with security outside of these hours.

Please report any incidents or concerns to the Harbour Master's Office via VHF channel 68 *Beaulieu River Radio* or by calling 01590 616200. Out of hours call 999.



UK

1. Bangor Marina
2. Rhu Marina
3. Troon Yacht Haven
4. Royal Quays Marina
5. Whitehaven Marina
6. Fleetwood Haven Marina
7. Conwy Quays Marina
8. Neyland Yacht Haven
9. Penarth Quays Marina
10. Upton Marina
11. Portishead Quays Marina
12. Mylor Yacht Harbour
13. Mayflower Marina
14. Poole Quay Boat Haven
15. Buckler's Hard Yacht Harbour
16. Town Quay Marina
17. Cowes Yacht Haven
18. Royal Clarence Marina
19. Emsworth Yacht Harbour
20. Birdham Pool Marina
21. Dover Marina
22. Gillingham Marina
23. Fambridge Yacht Haven
24. Tollesbury Marina
25. Fox's Marina and Boatyard
26. Brundall Bay Marina
27. Beaucette Marina

France

1. Dunkerque Grand Large
2. Calais
3. Boulogne-sur-mer
4. Saint-Valéry Sur Somme
5. Dieppe
6. Saint-Valéry en Caux
7. Fécamp
8. Le Havre Plaisance
9. Port-Deauville
10. Dives-Cabourg-Houlgate
11. Ouistreham/Caen
12. Granville
13. Saint-Quay Port d'Armor
14. Perros-Guirec
15. Roscoff
16. Marinas de Brest
17. Douarnenez-Tréboul
18. Locudy
19. Port la Forêt
20. Concarneau
21. Ports de Nantes

Germany

22. Sonwik Marina
23. Ancora Marina
24. Marina Boltenhagen
25. Marina Wiek auf Rügen
26. Baltic Sea Resort
27. Naturhafen Krummin
28. Lagunenstadt Ueckermünde

Republic of Ireland

1. Malahide Marina

Netherlands

2. Marina Den Oever
3. Jachthaven Waterland
4. Jachthaven Wetterwille
5. Marina Port Zélande
6. Jachthaven Biesbosch
7. Delta Marina Kortgene

Belgium

1. VNZ Blankenberge
2. VY Nieuwpoort

Spain

1. Puerto Deportivo Gijón
2. Marina Combarro
3. Nauta Sanxenxo
4. Marina La Palma
5. Puerto Calero
6. Alcaidesa Marina
7. Pobra Marina

Portugal

1. Douro Marina
2. Marina de Portimão
3. Quinta do Lorde Marina

Italy

1. Porto Romano
2. Venezia Certosa Marina
3. Marina del Cavallino

Croatia

1. Marina Punat

Greece

1. Linariá Marnia
2. Kos Marina

TransEurope Marinas offer reciprocal berthing arrangements for Beaulieu River mooring holders. For details, please see transeuropemarinas.com

OUR BOATYARD



Buckler's Hard Yacht Harbour is pleased to offer a competitive range of boatyard services all year round.

The boatyard operates a 40-ton hoist which can lift vessels of up to 18m in length. The boatyard team can lift, pressure wash and block ashore vessels in the boatyard. On-site facilities include electricity and a chandlery, and new for this year a telehandler, pictured right, for the stepping and unstepping of masts.

Competitively priced undercover storage is available for when a more specialised service is required.

A list of approved suppliers can be instructed to work in the boatyard (see opposite page), or alternatively an open yard policy allows customers to bring in their own contractors for a small charge.

Please refer to www.beaulieuriver.co.uk/boatyard for a list of prices.



DID YOU KNOW...?

Resident berth and mooring-holders benefit from 10% off all boat lifts and launches as well as 30 days' free storage any time of year*.

*Excludes undercover storage and survey lift.

Please check www.beaulieuriver.co.uk/boatyard for a list of terms and conditions.

BOAT REPAIR & MAINTENANCE SERVICES

The Buckler's Hard boatyard is operated on an open policy basis.

For a small charge, boat owners are welcome to use suppliers of their choice, provided they comply with our guidelines and register with the Marina Reception. Alternatively, we have selected a number of approved suppliers who are known for their high standards of service and are pre-registered to deliver services at Beaulieu River and the boatyard. The listings below are their advertisements. If you can't find the service you are looking for here, we will be happy to help you find the right specialist for your needs; please ask.

Boat Builders & Boat Maintenance

Cooks Maritime Craftsmen & Yacht Surveys

Fully qualified and insured. Pre-purchase, insurance surveys. A wide range of repairs and refits carried out and craft maintained, from internal joinery, GRP, and timber repairs to boat-washing, antifouling and painting.

07952 955906 / 01590 675521

www.cooksmaritivesurveys.com

cooksmcraftsmen@gmail.com

Brokerage & Yacht Sales

BH Boat Sales

Sole appointed yacht brokers for Beaulieu River.

01590 616316 | sales@bhboatsales.com

www.bhyachtbrokers.com

Rigging Services

Ocean Rigging

All-round ocean rigging service.

01590 676292 | info@oceanrigging.co.uk

www.oceanrigging.co.uk

Marine Electronics

Greenham Regis

Sales, service and installation of all aspects of marine electronics.

01590 671144 | Lymington@greenham-regis.com

www.greenham-regis.com

S.D. Electronics

Marine electronics and electrical engineer. System install, repair electrical and electronic systems. Mast wiring, connections and servicing masthead units, checking batteries, repair of electric winches and bow thruster. Alternator and starter motor repairs.

07551 949083 | Eastough.pipistrelle@talktalk.net

Marine Engineers

Marine Tec Ltd

Inboard and outboard engine service and repair.

07717 155871

info@marine-tec.co.uk

www.marine-tec.co.uk

Valeting Services

Solent Yacht Care Limited

Specialist valeting services including polishing and waxing, teak renovation, antifouling, anode replacement, for sale preparation, regular exterior wash programme and general maintenance.

Approved AGlaze applicators. Boracol stockist.

Fully insured.

07917 543877 / 01590 719587

enquiries@solentyachtcare.co.uk

www.solentyachtcare.co.uk

IboatValet

Boat valeting and management services.

07881 107560 | matt@iboatvalet.co.uk

www.iboatvalet.co.uk



USEFUL CONTACT NUMBERS

Harbour Master's Office	01590 616200 / harbour.office@beaulieu.co.uk
Buckler's Hard Village Manager & Maritime Museum	01590 616203
Car Hire – SHB Hire Ltd (Romsey)	01794 511458
Casualty – Lymington Hospital	01590 663000
Customs – National Yacht Line	0300 123 2012
RS Divers	023 9319 0409
Doctors – Waterfront & Solent Surgery	023 8084 1841
Trafalgar Dental Practice	023 8089 1936
National Motor Museum visitor enquiries	01590 612345
Police (non-emergency)	101
Royal Southampton Yacht Club, Gins Clubhouse	02380 223352 (option 1)
Seadown Veterinary Group (Hythe branch)	02380 842237
Tourist Information	thenewforest.co.uk

SOLENT HARBOUR OFFICES

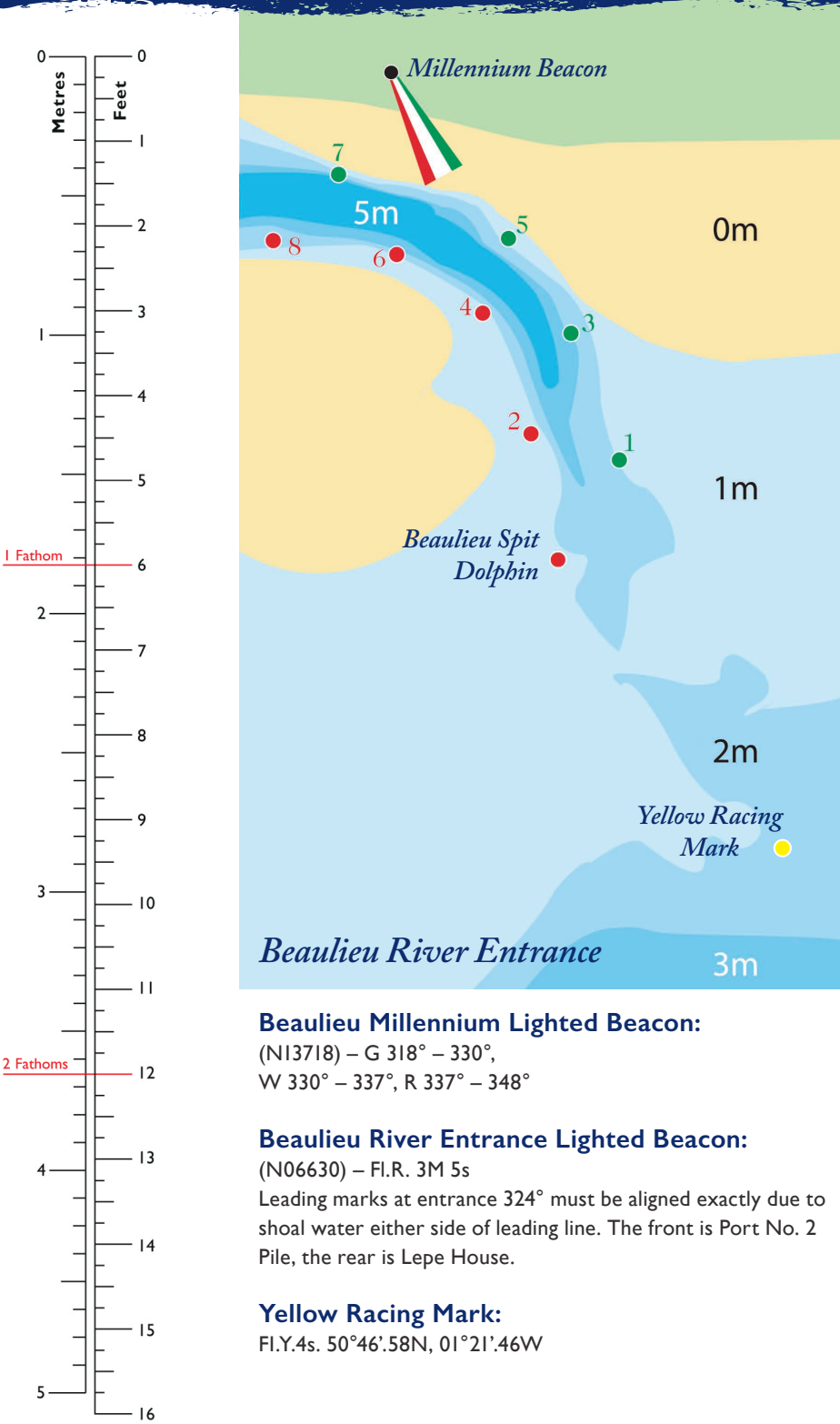
Lymington	01590 672014
Cowes	01983 293952
Hamble	01489 576387
Yarmouth	01983 760321

LOCAL TAXI SERVICES

Lyndhurst Taxis	07708 866844
Marchwood Motorways	02380 842929
Harvey's Taxi	07770 722522
OC Cars (7 Seaters available)	07789 121749

For a more comprehensive list please see our notice board.

NAVIGATION & TIDE TIMES 2022



JANUARY				FEBRUARY				MARCH				APRIL			
<div>1</div> <div>Time 0248 0.9</div> <div>m 0915 3.7</div> <div>SA 1520 0.7</div> <div>2141 3.6</div>	<div>16</div> <div>Time 0336 1.4</div> <div>m 1003 3.4</div> <div>SU 1603 1.1</div> <div>2232 3.4</div>	<div>1</div> <div>Time 0432 0.7</div> <div>m 1036 3.7</div> <div>TU 1658 0.3</div> <div>2311 3.7</div>	<div>16</div> <div>Time 0443 1.0</div> <div>m 1052 3.5</div> <div>W 1701 0.6</div> <div>2317 3.5</div>	<div>1</div> <div>Time 0335 0.9</div> <div>m 0944 3.5</div> <div>TU 1558 0.5</div> <div>2218 3.6</div>	<div>16</div> <div>Time 0338 1.2</div> <div>m 0955 3.3</div> <div>W 1654 0.8</div> <div>2218 3.5</div>	<div>1</div> <div>Time 0444 0.4</div> <div>m 1045 3.6</div> <div>F 1703 0.3</div> <div>2316 3.7</div>	<div>16</div> <div>Time 0420 0.5</div> <div>m 1026 3.6</div> <div>SA 1638 0.3</div> <div>2247 3.7</div>								
<div>2</div> <div>Time 0343 0.7</div> <div>m 1001 3.8</div> <div>SU 1614 0.5</div> <div>2229 3.7</div>	<div>17</div> <div>Time 0420 1.2</div> <div>m 1039 3.5</div> <div>M 1644 0.9</div> <div>2307 3.5</div>	<div>2</div> <div>Time 0520 0.5</div> <div>m 1118 3.7</div> <div>W 1741 0.2</div> <div>2351 3.6</div>	<div>17</div> <div>Time 0518 0.8</div> <div>m 1123 3.5</div> <div>TH 1735 0.5</div> <div>2351 3.6</div>	<div>2</div> <div>Time 0422 0.6</div> <div>m 1024 3.6</div> <div>W 1643 0.3</div> <div>2258 3.7</div>	<div>17</div> <div>Time 0416 0.8</div> <div>m 1026 3.4</div> <div>TH 1633 0.5</div> <div>2248 3.6</div>	<div>2</div> <div>Time 0524 0.3</div> <div>m 1123 3.6</div> <div>SA 1740 0.3</div> <div>2355 3.7</div>	<div>17</div> <div>Time 0459 0.3</div> <div>m 1059 3.7</div> <div>SU 1717 0.2</div> <div>2321 3.8</div>								
<div>3</div> <div>Time 0437 0.6</div> <div>m 1045 3.8</div> <div>M 1705 0.4</div> <div>2317 3.8</div>	<div>18</div> <div>Time 0501 1.1</div> <div>m 1112 3.5</div> <div>TU 1721 0.8</div> <div>2342 3.5</div>	<div>3</div> <div>Time 0003 3.7</div> <div>m 0601 0.4</div> <div>TH 1206 3.7</div> <div>1822 0.2</div>	<div>18</div> <div>Time 0551 0.6</div> <div>m 1156 3.5</div> <div>F 1807 0.4</div> <div>1838 0.3</div>	<div>3</div> <div>Time 0506 0.4</div> <div>m 1103 3.6</div> <div>TH 1726 0.1</div> <div>2341 3.7</div>	<div>18</div> <div>Time 0453 0.6</div> <div>m 1056 3.5</div> <div>F 1710 0.3</div> <div>2319 3.6</div>	<div>3</div> <div>Time 0559 0.4</div> <div>m 1207 3.6</div> <div>SU 1814 0.4</div> <div>1844 0.6</div>	<div>18</div> <div>Time 0536 0.2</div> <div>m 1137 3.7</div> <div>M 1753 0.2</div> <div>1830 0.3</div>								
<div>4</div> <div>Time 0527 0.6</div> <div>m 1130 3.8</div> <div>TU 1751 0.3</div> <div>1847 1.0</div>	<div>19</div> <div>Time 0536 1.0</div> <div>m 1147 3.5</div> <div>W 1753 0.7</div> <div>1857 0.6</div>	<div>4</div> <div>Time 0059 3.7</div> <div>m 0642 0.5</div> <div>F 1257 3.6</div> <div>1901 0.3</div>	<div>19</div> <div>Time 0028 3.6</div> <div>m 0622 0.5</div> <div>SA 1232 3.5</div> <div>1838 0.3</div>	<div>4</div> <div>Time 0545 0.3</div> <div>m 1146 3.6</div> <div>F 1803 0.1</div> <div>2355 3.7</div>	<div>19</div> <div>Time 0527 0.4</div> <div>m 1128 3.6</div> <div>SA 1743 0.2</div> <div>2355 3.7</div>	<div>4</div> <div>Time 0035 3.6</div> <div>m 0631 0.5</div> <div>M 1249 3.5</div> <div>1844 0.6</div>	<div>19</div> <div>Time 0002 3.8</div> <div>m 0612 0.2</div> <div>TU 1222 3.7</div> <div>1830 0.3</div>								
<div>5</div> <div>Time 0015 3.8</div> <div>m 0613 0.6</div> <div>W 1222 3.7</div> <div>1835 0.4</div>	<div>20</div> <div>Time 0018 3.5</div> <div>m 0608 0.9</div> <div>TH 1220 3.5</div> <div>1825 0.7</div>	<div>5</div> <div>Time 0158 3.7</div> <div>m 0721 0.6</div> <div>SA 1350 3.5</div> <div>1940 0.5</div>	<div>20</div> <div>Time 0105 3.6</div> <div>m 0654 0.5</div> <div>SU 1309 3.5</div> <div>1910 0.3</div>	<div>5</div> <div>Time 0029 3.7</div> <div>m 0622 0.3</div> <div>SA 1233 3.6</div> <div>1838 0.3</div>	<div>20</div> <div>Time 0600 0.3</div> <div>m 1204 3.6</div> <div>SU 1817 0.1</div> <div>1844 0.6</div>	<div>5</div> <div>Time 0112 3.6</div> <div>m 0658 0.7</div> <div>TU 1330 3.5</div> <div>1911 0.9</div>	<div>20</div> <div>Time 0046 3.7</div> <div>m 1312 3.7</div> <div>W 1908 0.5</div> <div>1908 0.5</div>								
<div>6</div> <div>Time 0119 3.7</div> <div>m 0657 0.7</div> <div>TH 1318 3.6</div> <div>1920 0.5</div>	<div>21</div> <div>Time 0054 3.5</div> <div>m 0639 0.9</div> <div>F 1255 3.5</div> <div>1856 0.7</div>	<div>6</div> <div>Time 0243 3.6</div> <div>m 0800 0.9</div> <div>SU 1441 3.4</div> <div>2017 0.8</div>	<div>21</div> <div>Time 0144 3.6</div> <div>m 0727 0.5</div> <div>M 1350 3.5</div> <div>1945 0.4</div>	<div>6</div> <div>Time 0115 3.7</div> <div>m 0656 0.5</div> <div>SU 1320 3.5</div> <div>1912 0.5</div>	<div>21</div> <div>Time 0032 3.7</div> <div>m 0633 0.2</div> <div>M 1244 3.7</div> <div>1850 0.2</div>	<div>6</div> <div>Time 0146 3.5</div> <div>m 0725 0.9</div> <div>W 1405 3.4</div> <div>1940 1.1</div>	<div>21</div> <div>Time 0136 3.6</div> <div>m 0730 0.5</div> <div>TH 1413 3.5</div> <div>1952 0.9</div>								
<div>7</div> <div>Time 0228 3.6</div> <div>m 0742 0.9</div> <div>F 1417 3.5</div> <div>2004 0.8</div>	<div>22</div> <div>Time 0133 3.5</div> <div>m 0712 0.9</div> <div>SA 1333 3.4</div> <div>1929 0.7</div>	<div>7</div> <div>Time 0324 3.5</div> <div>m 0839 1.1</div> <div>M 1530 3.3</div> <div>2056 1.1</div>	<div>22</div> <div>Time 0227 3.5</div> <div>m 0805 0.6</div> <div>TU 1438 3.4</div> <div>2024 0.7</div>	<div>7</div> <div>Time 0156 3.6</div> <div>m 0728 0.7</div> <div>M 1403 3.4</div> <div>1942 0.8</div>	<div>22</div> <div>Time 0112 3.7</div> <div>m 0708 0.3</div> <div>TU 1328 3.6</div> <div>1925 0.4</div>	<div>7</div> <div>Time 0219 3.3</div> <div>m 0755 1.1</div> <div>TH 1444 3.2</div> <div>2013 1.4</div>	<div>22</div> <div>Time 0236 3.5</div> <div>m 0817 0.9</div> <div>F 1528 3.4</div> <div>2046 1.3</div>								
<div>8</div> <div>Time 0323 0.8</div> <div>m 0831 1.2</div> <div>SA 1517 3.4</div> <div>2052 1.0</div>	<div>23</div> <div>Time 0214 3.5</div> <div>m 0748 0.9</div> <div>SU 1415 3.4</div> <div>2006 0.7</div>	<div>8</div> <div>Time 0404 3.3</div> <div>m 0923 1.4</div> <div>TU 1619 3.1</div> <div>2142 1.5</div>	<div>23</div> <div>Time 0318 3.4</div> <div>m 0849 0.9</div> <div>W 1538 3.3</div> <div>2110 1.0</div>	<div>8</div> <div>Time 0231 3.5</div> <div>m 0759 1.0</div> <div>TU 1443 3.3</div> <div>2013 1.1</div>	<div>23</div> <div>Time 0158 3.6</div> <div>m 0744 0.5</div> <div>W 1420 3.5</div> <div>2004 0.7</div>	<div>8</div> <div>Time 0301 3.2</div> <div>m 0832 1.4</div> <div>F 1531 3.1</div> <div>2055 1.8</div>	<div>23</div> <div>Time 0348 3.2</div> <div>m 0823 1.3</div> <div>SA 1649 3.2</div> <div>2219 1.7</div>								
<div>9</div> <div>Time 0411 3.5</div> <div>m 0923 1.4</div> <div>SU 1615 3.2</div> <div>2147 1.3</div>	<div>24</div> <div>Time 0301 3.4</div> <div>m 0829 1.0</div> <div>M 1506 3.3</div> <div>2049 0.9</div>	<div>9</div> <div>Time 0450 3.2</div> <div>m 1019 1.7</div> <div>W 1716 2.9</div> <div>2249 1.8</div>	<div>24</div> <div>Time 0422 3.3</div> <div>m 0942 1.2</div> <div>TH 1655 3.1</div> <div>2211 1.4</div>	<div>9</div> <div>Time 0306 3.3</div> <div>m 0830 1.2</div> <div>W 1522 3.2</div> <div>2048 1.4</div>	<div>24</div> <div>Time 0252 3.4</div> <div>m 0828 0.9</div> <div>TH 1525 3.3</div> <div>2051 1.1</div>	<div>9</div> <div>Time 0351 3.0</div> <div>m 0922 1.8</div> <div>SA 1630 2.9</div> <div>2202 2.1</div>	<div>24</div> <div>Time 0512 3.1</div> <div>m 1104 1.5</div> <div>SU 1811 3.2</div> <div>2351 1.7</div>								
<div>10</div> <div>Time 0502 3.3</div> <div>m 1022 1.6</div> <div>M 1716 3.1</div> <div>2247 1.5</div>	<div>25</div> <div>Time 0356 3.4</div> <div>m 0916 1.2</div> <div>TU 1609 3.2</div> <div>2140 1.1</div>	<div>10</div> <div>Time 0550 3.0</div> <div>m 1145 1.8</div> <div>TH 1832 2.8</div> <div>2249 1.8</div>	<div>25</div> <div>Time 0539 3.1</div> <div>m 1106 1.5</div> <div>F 1822 3.0</div> <div>2211 1.4</div>	<div>10</div> <div>Time 0345 3.1</div> <div>m 0909 1.5</div> <div>TH 1609 3.0</div> <div>2133 1.8</div>	<div>25</div> <div>Time 0359 3.2</div> <div>m 0924 1.3</div> <div>F 1649 3.1</div> <div>2201 1.6</div>	<div>10</div> <div>Time 0455 2.8</div> <div>m 1132 2.0</div> <div>SU 1806 2.8</div> <div>2202 2.1</div>	<div>25</div> <div>Time 0634 3.0</div> <div>m 1222 1.4</div> <div>M 1923 3.2</div> <div>2351 1.7</div>								
<div>11</div> <div>Time 0557 3.2</div> <div>m 1130 1.7</div> <div>TU 1816 3.0</div> <div>2353 1.7</div>	<div>26</div> <div>Time 0459 3.3</div> <div>m 1016 1.3</div> <div>W 1724 3.1</div> <div>2244 1.3</div>	<div>11</div> <div>Time 0014 1.9</div> <div>m 0705 2.9</div> <div>F 1305 1.8</div> <div>1948 2.8</div>	<div>26</div> <div>Time 0002 1.6</div> <div>m 0656 3.1</div> <div>SA 1256 1.5</div> <div>1939 3.1</div>	<div>11</div> <div>Time 0435 2.9</div> <div>m 1007 1.9</div> <div>F 1712 2.8</div> <div>2324 2.1</div>	<div>26</div> <div>Time 0522 3.0</div> <div>m 1112 1.6</div> <div>SA 1818 3.0</div> <div>2324 2.1</div>	<div>11</div> <div>Time 0027 2.1</div> <div>m 0658 2.7</div> <div>M 1254 1.8</div> <div>1950 2.9</div>	<div>26</div> <div>Time 0103 1.5</div> <div>m 0742 3.1</div> <div>TU 1327 1.3</div> <div>2028 3.4</div>								
<div>12</div> <div>Time 0651 3.2</div> <div>m 1236 1.7</div> <div>W 1917 3.0</div> <div>2353 1.7</div>	<div>27</div> <div>Time 0606 3.2</div> <div>m 1136 1.4</div> <div>TH 1835 3.1</div> <div>2347 3.0</div>	<div>12</div> <div>Time 0129 1.9</div> <div>m 0812 3.0</div> <div>SA 1411 1.6</div> <div>2047 3.0</div>	<div>27</div> <div>Time 0134 1.5</div> <div>m 0805 3.2</div> <div>SU 1410 1.2</div> <div>2043 3.2</div>	<div>12</div> <div>Time 0545 2.8</div> <div>m 1228 1.9</div> <div>SA 1917 2.8</div> <div>2347 3.0</div>	<div>27</div> <div>Time 0011 1.7</div> <div>m 0648 3.0</div> <div>SU 1249 1.5</div> <div>1934 3.1</div>	<div>12</div> <div>Time 0133 1.8</div> <div>m 0807 2.9</div> <div>TU 1349 1.5</div> <div>2038 3.1</div>	<div>27</div> <div>Time 0202 1.3</div> <div>m 0837 3.3</div> <div>W 1422 1.0</div> <div>2118 3.5</div>								
<div>13</div> <div>Time 0055 1.7</div> <div>m 0747 3.2</div> <div>TH 1336 1.6</div> <div>2015 3.0</div>	<div>28</div> <div>Time 0013 1.4</div> <div>m 0710 3.3</div> <div>F 1300 1.3</div> <div>1943 3.2</div>	<div>13</div> <div>Time 0232 1.7</div> <div>m 0903 3.1</div> <div>SU 1503 1.4</div> <div>2134 3.2</div>	<div>28</div> <div>Time 0241 1.2</div> <div>m 0859 3.3</div> <div>M 1508 0.9</div> <div>2134 3.4</div>	<div>13</div> <div>Time 0107 2.0</div> <div>m 0743 2.8</div> <div>SU 1344 1.8</div> <div>2023 2.9</div>	<div>28</div> <div>Time 0129 1.6</div> <div>m 0756 3.1</div> <div>M 1356 1.2</div> <div>2036 3.3</div>	<div>13</div> <div>Time 0220 1.5</div> <div>m 0850 3.1</div> <div>W 1434 1.2</div> <div>2115 3.4</div>	<div>28</div> <div>Time 0251 1.0</div> <div>m 0917 3.4</div> <div>TH 1509 0.8</div> <div>2153 3.6</div>								
<div>14</div> <div>Time 0153 1.6</div> <div>m 0838 3.2</div> <div>F 1430 1.5</div> <div>2108 3.1</div>	<div>29</div> <div>Time 0132 1.3</div> <div>m 0813 3.4</div> <div>SA 1411 1.1</div> <div>2045 3.3</div>	<div>14</div> <div>Time 0322 1.5</div> <div>m 0944 3.3</div> <div>M 1545 1.1</div> <div>2212 3.3</div>	<div>29</div> <div>Time 0229 1.2</div> <div>m 0849 3.3</div> <div>TU 1450 0.9</div> <div>2126 3.5</div>	<div>14</div> <div>Time 0215 1.8</div> <div>m 0839 3.0</div> <div>M 1434 1.5</div> <div>2110 3.1</div>	<div>29</div> <div>Time 0229 1.2</div> <div>m 0849 3.3</div> <div>TU 1450 0.9</div> <div>2126 3.5</div>	<div>14</div> <div>Time 0301 1.1</div> <div>m 0924 3.3</div> <div>TH 1517 0.8</div> <div>2146 3.5</div>	<div>29</div> <div>Time 0336 0.7</div> <div>m 0950 3.5</div> <div>F 1554 0.6</div> <div>2219 3.6</div>								
<div>15</div> <div>Time 0246 1.5</div> <div>m 0923 3.3</div> <div>SA 1519 1.3</div> <div>2152 3.3</div>	<div>30</div> <div>Time 0240 1.1</div> <div>m 0907 3.5</div> <div>SU 1512 0.8</div> <div>2139 3.5</div>	<div>15</div> <div>Time 0404 1.2</div> <div>m 1020 3.4</div> <div>TU 1624 0.9</div> <div>2246 3.5</div>	<div>30</div> <div>Time 0318 0.9</div> <div>m 0930 3.4</div> <div>W 1538 0.6</div> <div>2206 3.6</div>	<div>15</div> <div>Time 0300 1.5</div> <div>m 0921 3.2</div> <div>TU 1516 1.1</div> <div>2147 3.3</div>	<div>30</div> <div>Time 0318 0.9</div> <div>m 0930 3.4</div> <div>W 1538 0.6</div> <div>2206 3.6</div>	<div>15</div> <div>Time 0340 0.8</div> <div>m 0954 3.5</div> <div>F 1558 0.5</div> <div>2216 3.6</div>	<div>30</div> <div>Time 0418 0.6</div> <div>m 1025 3.5</div> <div>SA 1635 0.6</div> <div>2249 3.6</div>								
<div>31</div> <div>Time 0339 0.9</div> <div>m 0953 3.6</div> <div>M 1607 0.5</div> <div>2226 3.6</div>	<div>31</div> <div>Time 0402 0.6</div> <div>m 1008 3.5</div> <div>TH 1621 0.4</div> <div>2241 3.7</div>														

In the approaches to and within the Western Solent double high waters occur at or near springs; on other occasions there is a stand which lasts about 2 hours. The predictions refer to the first high water when there are two and are approximate.

For Summer Time add one hour in yellow areas. Tide differences: Portsmouth +27 mins (approx.) Dover +4 mins (approx.)

MAY				JUNE				JULY				AUGUST			
<div>1</div> <div>Time 0458 0.5</div> <div>m 1102 3.5</div> <div>SU 1713 0.6</div> <div>2322 3.6</div>	<div>16</div> <div>Time 0428 0.3</div> <div>m 1034 3.7</div> <div>M 1648 0.3</div> <div>2254 3.8</div>	<div>1</div> <div>Time 0543 0.8</div> <div>m 1207 3.5</div> <div>W 1758 1.1</div> <div>1829 1.2</div>	<div>16</div> <div>Time 0540 0.3</div> <div>m 1157 3.7</div> <div>TH 1802 0.5</div> <div>1850 0.7</div>	<div>1</div> <div>Time 0600 0.9</div> <div>m 1231 3.5</div> <div>F 1817 1.1</div> <div>1920 1.2</div>	<div>16</div> <div>Time 0617 0.3</div> <div>m 1252 3.8</div> <div>SA 1839 0.5</div> <div>1924 0.7</div>	<div>1</div> <div>Time 0043 3.4</div> <div>m 0645 0.7</div> <div>M 1321 3.5</div> <div>1901 0.9</div>	<div>16</div> <div>Time 0125 3.6</div> <div>m 0721 0.4</div> <div>TU 1430 3.7</div> <div>1942 0.7</div>								
<div>2</div> <div>Time 0533 0.6</div> <div>m 1142 3.5</div> <div>M 1747 0.7</div> <div>1847 1.0</div>	<div>17</div> <div>Time 0512 0.2</div> <div>m 1115 3.8</div> <div>TU 1731 0.3</div> <div>2336 3.8</div>	<div>2</div> <div>Time 0013 3.5</div> <div>m 0614 0.9</div> <div>TH 1247 3.5</div> <div>1829 1.2</div>	<div>17</div> <div>Time 0012 3.8</div> <div>m 0626 0.4</div> <div>F 1301 3.7</div> <div>1850 0.7</div>	<div>2</div> <div>Time 0031 3.4</div> <div>m 0632 0.9</div> <div>SA 1309 3.5</div> <div>1849 1.2</div>	<div>17</div> <div>Time 0053 3.7</div> <div>m 0700 0.3</div> <div>SU 1406 3.7</div> <div>1924 0.7</div>	<div>2</div> <div>Time 0118 3.4</div> <div>m 0715 0.7</div> <div>TU 1358 3.5</div> <div>1933 0.9</div>	<div>17</div> <div>Time 0220 3.5</div> <div>m 0800 0.7</div> <div>W 1510 3.6</div> <div>2023 1.0</div>								
<div>3</div> <div>Time 0001 3.6</div> <div>m 0604 0.7</div> <div>TU 1225 3.5</div> <div>1817 0.9</div>	<div>18</div> <div>Time 0553 0.2</div> <div>m 1205 3.8</div> <div>W 1814 0.4</div> <div>1857 0.6</div>	<div>3</div> <div>Time 0048 3.4</div> <div>m 0643 1.0</div> <div>F 1325 3.4</div> <div>1900 1.3</div>	<div>18</div> <div>Time 0109 3.7</div> <div>m 0713 0.5</div> <div>SA 1417 3.7</div> <div>1939 0.9</div>	<div>3</div> <div>Time 0107 3.4</div> <div>m 0703 1.0</div> <div>SU 1347 3.4</div> <div>1920 1.2</div>	<div>18</div> <div>Time 0152 3.6</div> <div>m 0744 0.5</div> <div>M 1508 3.7</div> <div>2009 0.9</div>	<div>3</div> <div>Time 0154 3.4</div> <div>m 0748 0.8</div> <div>W 1438 3.5</div> <div>2009 1.0</div>	<div>18</div> <div>Time 0314 3.4</div> <div>m 0841 1.1</div> <div>TH 1550 3.5</div> <div>2108 1.3</div>								
<div>4</div> <div>Time 0038 3.5</div> <div>m 0633 0.8</div> <div>W 1304 3.5</div> <div>1847 1.0</div>	<div>19</div> <div>Time 0026 3.8</div> <div>m 0635 0.3</div> <div>TH 1305 3.7</div> <div>1857 0.6</div>	<div>4</div> <div>Time 0124 3.4</div> <div>m 0715 1.1</div> <div>SA 1404 3.4</div> <div>1935 1.4</div>	<div>19</div> <div>Time 0213 3.5</div> <div>m 0803 0.7</div> <div>SU 1525 3.6</div> <div>2032 1.1</div>	<div>4</div> <div>Time 0144 3.3</div> <div>m 0736 1.0</div> <div>M 1428 3.4</div> <div>1956 1.2</div>	<div>19</div> <div>Time 0255 3.5</div> <div>m 0831 0.8</div> <div>TU 1554 3.6</div> <div>2057 1.1</div>	<div>4</div> <div>Time 0239 3.3</div> <div>m 0826 0.9</div> <div>TH 1524 3.4</div> <div>2051 1.1</div>	<div>19</div> <div>Time 0404 3.2</div> <div>m 0928 1.4</div> <div>F 1634 3.3</div> <div>2202 1.6</div>								
<div>5</div> <div>Time 0111 3.5</div> <div>m 0700 1.0</div> <div>TH 1340 3.4</div> <div>1916 1.2</div>	<div>20</div> <div>Time 0122 3.7</div> <div>m 0721 0.6</div> <div>F 1415 3.6</div> <div>1946 1.0</div>	<div>5</div> <div>Time 0206 3.3</div> <div>m 0751 1.2</div> <div>SU 1450 3.3</div> <div>2015 1.5</div>	<div>20</div> <div>Time 0320 3.4</div> <div>m 0858 1.0</div> <div>M 1624 3.5</div> <div>2130 1.3</div>	<div>5</div> <div>Time 0227 3.3</div> <div>m 0813 1.1</div> <div>TU 1514 3.3</div> <div>2036 1.3</div>	<div>20</div> <div>Time 0354 3.4</div> <div>m 0921 1.1</div> <div>W 1639 3.5</div> <div>2151 1.3</div>	<div>5</div> <div>Time 0333 3.3</div> <div>m 0910 1.1</div> <div>F 1619 3.3</div> <div>2142 1.2</div>	<div>20</div> <div>Time 0500 3.0</div> <div>m 1033 1.8</div> <div>SA 1727 3.1</div> <div>2317 1.8</div>								
<div>6</div> <div>Time 0147 3.3</div> <div>m 0730 1.1</div> <div>F 1420 3.3</div> <div>1950 1.5</div>	<div>21</div> <div>Time 0226 3.5</div> <div>m 0813 0.9</div> <div>SA 1531 3.5</div> <div>2046 1.3</div>	<div>6</div> <div>Time 0255 3.1</div> <div>m 0835 1.4</div> <div>M 1542 3.2</div> <div>2105 1.7</div>	<div>21</div> <div>Time 0427 3.3</div> <div>m 0958 1.2</div> <div>TU 1722 3.4</div> <div>2231 1.5</div>	<div>6</div> <div>Time 0318 3.2</div> <div>m 0856 1.1</div> <div>W 1604 3.3</div> <div>2125 1.4</div>	<div>21</div> <div>Time 0451 3.2</div> <div>m 1016 1.3</div> <div>TH 1730 3.3</div> <div>2250 1.5</div>	<div>6</div> <div>Time 0440 3.2</div> <div>m 1007 1.3</div> <div>SA 1724 3.2</div> <div>2247 1.4</div>	<div>21</div> <div>Time 0612 2.9</div> <div>m 1152 2.0</div> <div>SU 1838 3.0</div> <div>2247 1.4</div>								
<div>7</div> <div>Time 0229 3.2</div> <div>m 0807 1.4</div> <div>SA 1508 3.2</div> <div>2032 1.7</div>	<div>22</div> <div>Time 0337 3.3</div> <div>m 0919 1.2</div> <td><div>7</div><div>Time 0353 3.0</div><div>m 0930 1.5</div><div>TU 1641 3.4</div><div>2201 1.5</div></td> <td><div>22</div><div>Time 0533 3.2</div><div>m 1059 1.3</div><div>W 1818 3.4</div><div>2336 1.5</div></td> <td><div>7</div><div>Time 0416 3.1</div><div>m 0948 </div></td>	<div>7</div> <div>Time 0353 3.0</div> <div>m 0930 1.5</div> <div>TU 1641 3.4</div> <div>2201 1.5</div>	<div>22</div> <div>Time 0533 3.2</div> <div>m 1059 1.3</div> <div>W 1818 3.4</div> <div>2336 1.5</div>	<div>7</div> <div>Time 0416 3.1</div> <div>m 0948 </div>											

SEPTEMBER

OCTOBER

NOVEMBER

DECEMBER

1 TH 0122 3.5 0723 0.6 1358 3.6 1942 0.8	16 F 0227 3.4 0800 1.2 1453 3.4 2020 1.3	1 SA 0143 3.6 0737 0.9 1412 3.5 2000 1.0	16 SU 0229 3.3 0800 1.6 1445 3.3 2019 1.7	2 F 0205 3.5 0759 0.8 1442 3.5 2021 1.0	17 SA 0311 3.2 0836 1.6 1532 3.2 2101 1.7	3 SA 0258 3.3 0840 1.1 1540 3.3 2109 1.3	18 SU 0359 3.1 0927 2.0 1620 3.0 2228 2.0	4 SU 0411 3.2 0934 1.5 1652 3.2 2218 1.6	19 M 0506 2.9 1129 2.2 1729 2.8	5 M 0543 3.0 1112 1.8 1818 3.1	20 TU 0008 2.0 0659 2.8 1246 2.2 1922 2.8	6 TU 0014 1.6 0710 3.1 1301 1.7 1937 3.2	21 W 0119 1.9 0811 3.0 1353 2.0 2024 3.0	7 W 0137 1.4 0821 3.3 1412 1.5 2035 3.4	22 TH 0216 1.6 0859 3.2 1443 1.7 2107 3.2	8 TH 0240 1.1 0913 3.5 1509 1.1 2121 3.5	23 F 0259 1.3 0935 3.4 1523 1.3 2141 3.4	9 F 0331 0.7 0956 3.7 1558 0.7 2202 3.7	24 SA 0338 1.0 1006 3.6 1600 1.0 2212 3.5	10 SA 0419 0.4 1036 3.8 1643 0.5 2240 3.7	25 SU 0415 0.7 1036 3.6 1636 0.8 2242 3.6	11 SU 0503 0.2 1116 3.8 1725 0.3 2320 3.7	26 M 0451 0.6 1105 3.7 1710 0.6 2310 3.6	12 M 0542 0.2 1204 3.8 1802 0.4	27 TU 0525 0.5 1137 3.7 1742 0.5 2341 3.7	13 TU 0006 3.7 0619 0.3 1252 3.8 1839 0.5	28 W 0557 0.4 1210 3.7 1813 0.5	14 W 0054 3.6 0654 0.5 1337 3.7 1914 0.7	29 TH 0017 3.7 0627 0.5 1245 3.7 1845 0.5	15 TH 0141 3.5 0727 0.8 1416 3.6 1947 1.0	30 F 0057 3.7 0700 0.6 1324 3.6 1920 0.7	15 SA 0148 3.5 0727 1.3 1405 3.4 1944 1.3	30 SU 0134 3.6 0724 1.0 1358 3.5 1948 1.0	31 M 0244 3.5 0814 1.4 1507 3.3 2046 1.4
1 TH 0411 3.3 0934 1.8 1632 3.2 2233 1.7	16 W 0347 3.1 0920 2.2 1601 3.0 2206 2.0	1 TH 0519 3.4 1045 1.7 1734 3.2 2314 1.4	16 F 0414 3.2 0937 1.9 1627 3.0 2203 1.7	2 W 0538 3.2 1124 1.9 1801 3.1 2353 1.6	17 TH 0456 3.0 1124 2.2 1716 2.9 2342 1.9	3 TH 0656 3.3 1234 1.7 1913 3.2	18 F 0630 3.0 1225 2.0 1854 2.9	4 F 0058 1.4 0803 3.5 1333 1.4 2012 3.4	19 SA 0038 1.7 0740 3.2 1313 1.8 2029 3.3	5 SA 0153 1.2 0856 3.6 1424 1.2 2055 3.5	20 SU 0127 1.5 0822 3.4 1356 1.4 2031 3.3	6 SU 0243 0.9 0935 3.7 1509 0.9 2129 3.6	21 M 0211 1.2 0855 3.5 1439 1.1 2104 3.4	7 M 0327 0.8 1003 3.8 1552 0.7 2203 3.6	22 TU 0255 0.9 0926 3.7 1521 0.8 2139 3.6	8 TU 0410 0.7 1032 3.8 1635 0.6 2240 3.6	23 W 0339 0.7 1000 3.8 1604 0.6 2214 3.7	9 W 0452 0.7 1103 3.7 1714 0.7 2318 3.6	24 TH 0423 0.6 1036 3.8 1648 0.5 2254 3.8	10 TH 0528 0.8 1140 3.7 1748 0.8	25 F 0507 0.5 1112 3.9 1730 0.4 2337 3.8	11 F 0002 3.6 0602 1.0 1218 3.6 1820 0.9	26 SA 0549 0.6 1157 3.8 1812 0.5	12 SA 0044 3.6 0634 1.2 1255 3.5 1850 1.1	27 SU 0031 3.8 0633 0.8 1249 3.7 1856 0.7	13 SU 0123 3.5 0705 1.4 1331 3.4 1920 1.3	28 M 0134 3.7 0719 1.0 1349 3.6 1944 0.9	14 M 0204 3.4 0737 1.6 1412 3.3 1955 1.6	29 TU 0250 3.6 0813 1.4 1459 3.4 2044 1.2	15 TU 0251 3.2 0817 1.9 1502 3.1 2041 1.8	30 W 0406 3.5 0925 1.6 1616 3.3 2200 1.4	15 TH 0318 3.3 0842 1.8 1525 3.1 2104 1.6	30 F 0448 3.5 0959 1.4 1658 3.3 2227 1.3	31 SA 0547 3.4 1106 1.5 1801 3.2 2334 1.4

COMMON BURGEES ON THE SOLENT

A selection of yacht club burgees which may be seen on the Beaulieu River. If you would like to see your club burgee in a future edition of this book, please contact the Harbour Master.



Beaulieu River and Buckler's Hard Yacht Harbour



Beaulieu River Sailing Club



Bembridge Sailing Club



Eling Sailing Club



Emsworth Sailing Club



Emsworth Slipper Sailing Club



Hornet Sailing Club



Hythe Sailing Club



Island Sailing Club



Keyhaven Yacht Club



Little Ship Club



Lymington Town Sailing Club



Nelson Owners Club



Nimbus Owners Club



Ocean Cruising Club



Old Carthusian Yacht Club



Royal Air Force Yacht Club



Royal Albert Yacht Club



Royal Artillery Yacht Club



Royal Channel Islands Yacht Club



Royal London Yacht Club



Royal Lymington Yacht Club



Royal Motor Yacht Club



Royal Naval Sailing Association



Royal Solent Yacht Club



Royal Southampton Yacht Club



Royal Southern Yacht Club



Royal Victoria Yacht Club



Royal Yacht Squadron

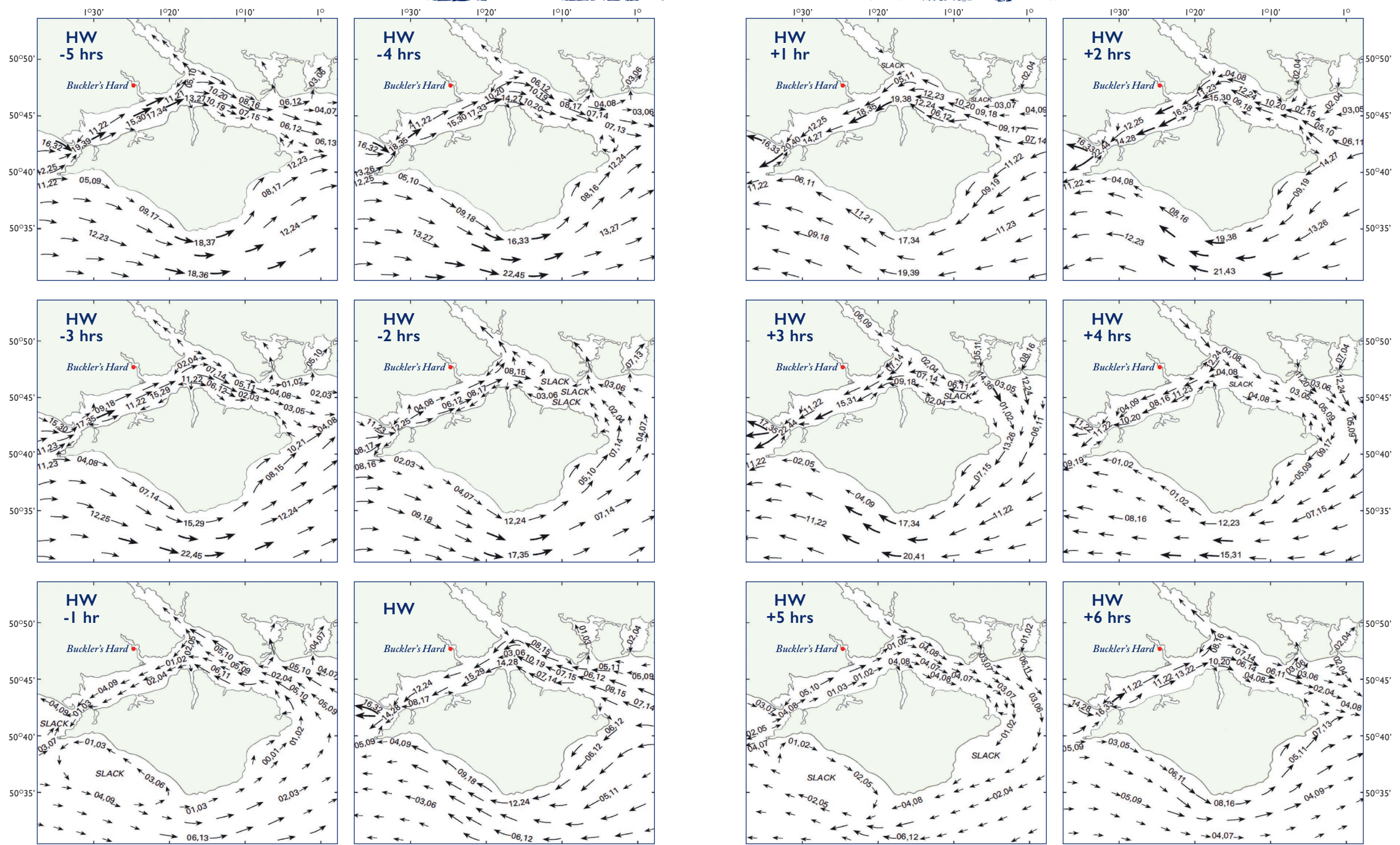


Warsash Sailing Club

In the approaches to and within the Western Solent double high waters occur at or near springs; on other occasions there is a stand which lasts about 2 hours. The predictions refer to the first high water when there are two and are approximate.

For Summer Time add one hour in yellow areas. Tide differences: Portsmouth +27 mins (approx.) Dover +4 mins (approx.)

SOLENT & ISLE OF WIGHT TIDAL STREAMS



High Water (HW) times refer to Portsmouth.

SIR CHAY REMEMBERS

*Edward, Lord Montagu and Sir Chay Blyth
preparing to cut the ribbon to open the
Bucklers Hard Yacht Harbour, 3rd October 1971*



Fresh from completing his round the world challenge, yachtsman Sir Chay Blyth came to open the Buckler's Hard Yacht Harbour in 1971. Here, he recalls the landmark opening and memorable sails with friends and fellow yachtsmen along the Beaulieu River.

When New Forest MP Sir Patrick McNair-Wilson introduced me to Edward, Lord Montagu, I was proud to be invited to perform the opening of Buckler's Hard Yacht Harbour. Up until then, I had never been to Beaulieu because I sailed large multihulls which were too big at that time but once I was there, I was taken aback by the beauty of Beaulieu and the amazing history of the place. You can't fail to be impressed by Palace House and the National Motor Museum, as well as how ships for Nelson's fleet at Trafalgar were built at Buckler's Hard... the whole place is steeped in history.

I had stayed at the Royal Southern Yacht Club the night before the opening and arrived fresh from there for the ceremony. We took a wander to meet the guests, onlookers and press who had gathered, then performed the ribbon cutting accompanied by a rousing 'three cheers'. Lord Montagu took us back to Palace House for lunch, then

we went for a drive around the estate in one of his favourite cars. The day was perfect.

When I came to the opening in October, I had recently returned from completing the first single-handed, non-stop westwards sail around the world aboard the yacht British Steel. It was previously thought of as "the impossible voyage" and took me 292 days. On my homecoming I was awarded the CBE and voted Man of the Year, followed by being named as the Yachtsman of the Year in 1972. We then went on to build Great Britain II, in which I skippered a crew of paratroopers, taking line honours in the first Whitbread Round the World Yacht Race. In the years to come, I co-skippered Virgin Atlantic and Virgin Atlantic II with Richard Branson.

If we were training, then once we had finished we would come to the Beaulieu River for a splendid time to round it off. We would come into this wonderful place with such a warm welcome, talk to other sailors and then go for drinks and supper at The Master Builder's Hotel – it was Grand with a capital 'G'!

By 1971, marinas were springing up everywhere but the Beaulieu River marina stood out as being very unusual because of its unique history and setting. Beaulieu is a destination to sail to and when you get there, it is like going back in time. You are bowled over by it.

We have taken friends along the river and always had a fantastic time. The length of the river has limited the number of boats which can moor there and even with the redevelopment, it hasn't been spoilt with endless pontoons like so many clinical-looking marinas. Beaulieu has kept its character and the essence of the place, which hasn't changed. It's also a great base for sails to explore along the Solent.

It was a privilege to be asked to perform the original opening and to return in 2021 to celebrate the yacht harbour's 50th anniversary after its £2m redevelopment. Nothing has changed really – it is still a fabulous place to come. I am glad that in my lifetime, the Beaulieu River has kept its charm and is as special today as it was during my first visit. I have been proud to be a part of these celebrations to mark such major milestones."

Sir Chay Blyth CBE BEM

*Below: Lord Montagu with Sir Chay Blyth
at the Golden Anniversary celebrations*





THE MASTER BUILDER'S

at Buckler's Hard



A historic hotel & restaurant overlooking the Beaulieu River.
We offer the ultimate haven for the tired and hungry.



Booking is essential. To reserve a room or table and view our menu, please visit our website:

themasterbuilders.co.uk



enquiries@themasterbuilders.co.uk

The Master Builder's House Hotel
Buckler's Hard, Beaulieu Estate,
Hampshire SO42 7XB.
01590 616 253



Staying on the Beaulieu River provides the perfect opportunity to hop ashore and explore the New Forest. Here are some suggestions as to how you could spend a couple of hours or days.

PLACES TO VISIT

Explore the historic village of Buckler's Hard, just a short stroll from the marina. The Buckler's Hard Visitor Centre and Museum tell the story of the village and its role in 18th century shipbuilding. Just over two miles upstream is the village of Beaulieu and the Beaulieu visitor attraction incorporating the National Motor Museum, Palace House, Beaulieu Abbey and World of Top Gear. Beaulieu River visitors receive 20% off admission to both attractions—see overleaf for further details.

7 miles to the south-west of the Beaulieu River is the Lymington River and the town of the same name. Browse the boutique shops or explore the street market held every Saturday.

The villages of Brockenhurst, Lyndhurst and Burley are within a 30-minute drive of Buckler's Hard, providing the opportunity to explore shops, cafés and restaurants.

WALKING

The New Forest is popular with walkers and has a variety of footpaths and routes to suit all abilities. For further information visit thenewforest.co.uk.

CYCLING

Off-road cycling in the New Forest is permitted on a waymarked network of Forestry Commission tracks. Bikes can be hired from New Forest Activities booking centre in Beaulieu. A map of authorised routes can be downloaded from newforestnpa.gov.uk

BEACH DAYS

Lepe Country Park and Calshot are good spots to sit on the beach and watch the busy Solent, or within 45 minutes by car you can be sitting on the sandy beach at Mudeford.

EAT & DRINK

The Captain's Table at the top of Buckler's Hard High Street serves hot and cold refreshments. The Master Builder's House Hotel offers casual and fine dining options and is situated within a five-minute walk of the marina. Pop-up bars and food vendors will be operating from the boatyard every weekend from Easter through to the end of September. Alternatively, there is a variety of places to eat in Beaulieu village.

EVENTS

For local events information, visit our website beaulieuriver.co.uk/things-to-do

BUCKLER'S HARD VILLAGE



VISIT BEAULIEU

Take a short stroll from the marina into the historic riverside village of Buckler's Hard.

The village is steeped in history, dating back to the 18th century. Originally named 'Montagu Town' by John, 2nd Duke of Montagu, Buckler's Hard developed into a hive of shipbuilding activity in the late 1700s, including the building of Nelson's favourite warship HMS Agamemnon. The cottages that line the unusually wide street – where logs and planks were once piled – housed tradesmen and labourers. Shipbuilding here went into decline shortly after the Napoleonic wars, but the village has remained unspoiled by the passage of time.

Discover more about the fascinating history of the village, its residents and the ships they built by visiting the **Buckler's Hard Visitor Centre and Museum** at the top of the village. Listen in on conversations between villagers of the past in the 18th century New Inn, and follow the stories of 19th and 20th century residents in an exhibition on village life. Marina and river visitors can claim a **20% discount on admission to the Museum***.

In the village, visitors can also step through the doors of a worker's cottage and go back in time to the 18th century to find out about the home life of the villagers and their families. One building, once the village school, is now a chapel that still holds regular services. Recent excavations of its cellar suggest that the building may have been used by smugglers.

Open daily from 10am
Find out more at
bucklershard.co.uk

*Bucklers Hard Museum Special Offer

The 20% discount applies to on-the-day admission prices to the Buckler's Hard Museum only. Discount is on presentation of a Beaulieu River mooring receipt. The mooring receipt must be presented within one month of issue date.



Treat yourself to a warming coffee, a cream tea or tuck into a light lunch at the recently refurbished Captain's Table at the top of the village.



Just two miles upstream from Buckler's Hard is the Beaulieu visitor attraction incorporating the National Motor Museum, Palace House, Beaulieu Abbey, World of Top Gear, Little Beaulieu and much more.

The National Motor Museum, home to a world-famous collection of over 280 vehicles, celebrates 140 years of ingenuity, imagination and engineering genius. Marvel at cars that broke World Land Speed Records, be star-struck by Chitty Chitty Bang Bang and relive favourite TV moments in World of Top Gear. For a bird's eye view, a monorail ride through the roof of the museum is a must!

New for 2022 is *Bond in Motion – No Time To Die*. This exhibition offers the opportunity to see many of the original vehicles, gadgets and costumes from the latest 007 film *No Time To Die*, with a large screen showing action shots from the box office hit.

The historic home of the Montagu family since 1538, Palace House is filled with family treasures and stories.

From the Mill Pond walk, the Victorian Flower and Kitchen Gardens to the Wilderness Garden and Alice's Topiary Wonderland, Beaulieu's beautiful outdoor spaces are waiting to be discovered.

The adventure play area, Little Beaulieu, is the perfect place for children to explore, with adventure round every corner. Clamber around a wooden replica of Palace House, uncover secret passageways and ride the zip wire. And while the children wear themselves out, parents can enjoy tea or coffee with a slice of cake at the perfectly placed café!

Experience the serenity of Beaulieu Abbey and learn what life was like for the monks who lived there over 800 years ago. Then, in the Secret Army Exhibition, discover Beaulieu's wartime secrets as the 'Finishing School' for the Special Operations Executive. Learn about the remarkable agents who trained on the Beaulieu Estate before risking their lives on dangerous covert missions during the Second World War.

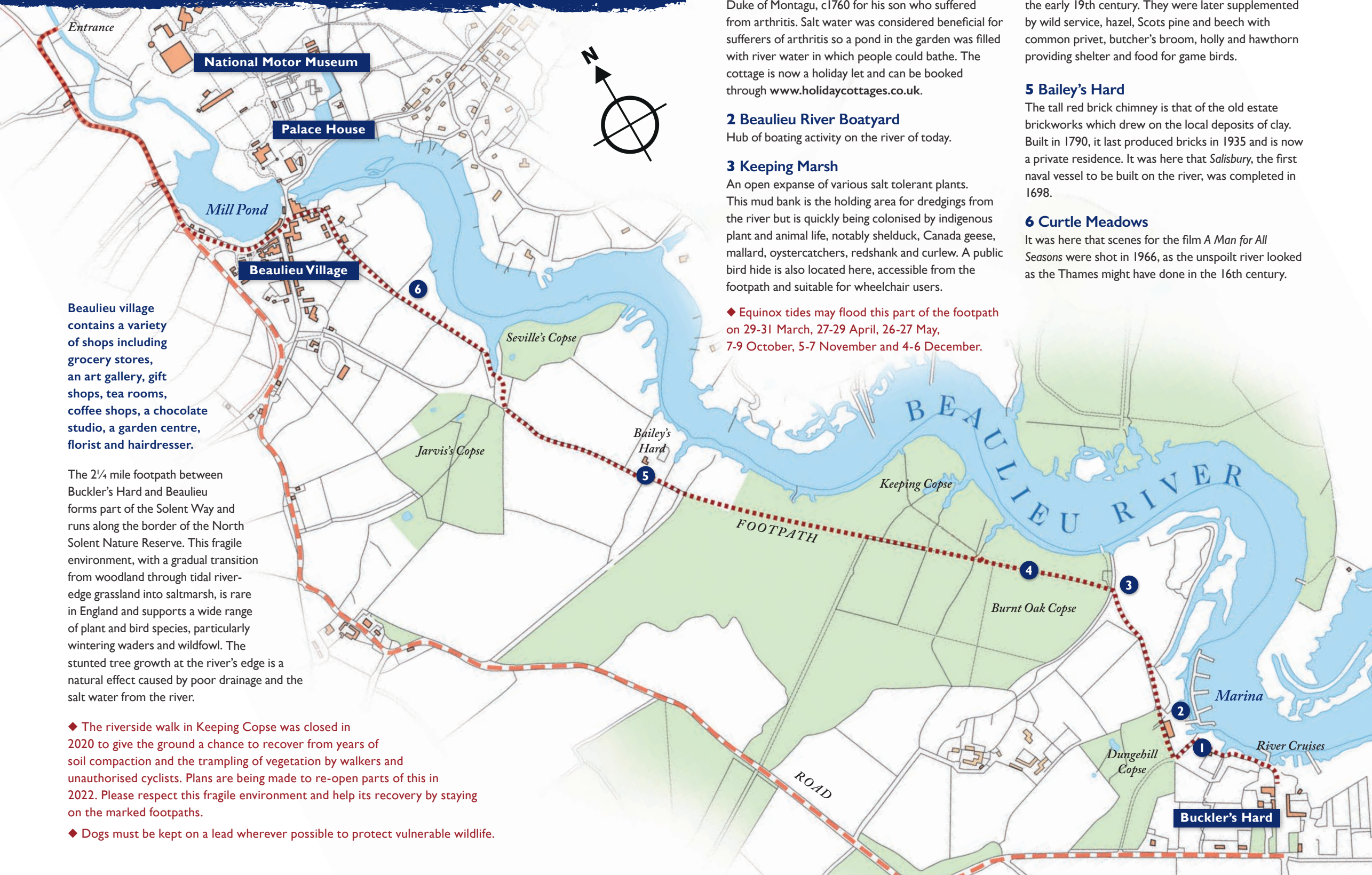
A ticket to Beaulieu includes entry to everything the attraction has to offer. What unforgettable memories will you make during your visit?

01590 612345 | beaulieu.co.uk

Beaulieu also hosts a number of events throughout the year.
Find out more at: beaulieuevents.co.uk.



WALKING FROM BUCKLER'S HARD TO BEAULIEU



Beaulieu village contains a variety of shops including grocery stores, an art gallery, gift shops, tea rooms, coffee shops, a chocolate studio, a garden centre, florist and hairdresser.

The 2¼ mile footpath between Buckler's Hard and Beaulieu forms part of the Solent Way and runs along the border of the North Solent Nature Reserve. This fragile environment, with a gradual transition from woodland through tidal river-edge grassland into saltmarsh, is rare in England and supports a wide range of plant and bird species, particularly wintering waders and wildfowl. The stunted tree growth at the river's edge is a natural effect caused by poor drainage and the salt water from the river.

- ◆ The riverside walk in Keeping Copse was closed in 2020 to give the ground a chance to recover from years of soil compaction and the trampling of vegetation by walkers and unauthorised cyclists. Plans are being made to re-open parts of this in 2022. Please respect this fragile environment and help its recovery by staying on the marked footpaths.
- ◆ Dogs must be kept on a lead wherever possible to protect vulnerable wildlife.

1 Duke's Bath House

This small thatched cottage was built by George, Duke of Montagu, c1760 for his son who suffered from arthritis. Salt water was considered beneficial for sufferers of arthritis so a pond in the garden was filled with river water in which people could bathe. The cottage is now a holiday let and can be booked through www.holidaycottages.co.uk.

2 Beaulieu River Boatyard

Hub of boating activity on the river of today.

3 Keeping Marsh

An open expanse of various salt tolerant plants. This mud bank is the holding area for dredgings from the river but is quickly being colonised by indigenous plant and animal life, notably shelduck, Canada geese, mallard, oystercatchers, redshank and curlew. A public bird hide is also located here, accessible from the footpath and suitable for wheelchair users.

◆ Equinox tides may flood this part of the footpath on 29-31 March, 27-29 April, 26-27 May, 7-9 October, 5-7 November and 4-6 December.

4 Burnt Oak Copse

The trees here are predominantly oak dating from the early 19th century. They were later supplemented by wild service, hazel, Scots pine and beech with common privet, butcher's broom, holly and hawthorn providing shelter and food for game birds.

5 Bailey's Hard

The tall red brick chimney is that of the old estate brickworks which drew on the local deposits of clay. Built in 1790, it last produced bricks in 1935 and is now a private residence. It was here that *Salisbury*, the first naval vessel to be built on the river, was completed in 1698.

6 Curtle Meadows

It was here that scenes for the film *A Man for All Seasons* were shot in 1966, as the unspoilt river looked as the Thames might have done in the 16th century.

BUCKLER'S HARD TO LEPE FROM THE WATER

The lower reaches of the Beaulieu River are best seen from the water as they are not served by a footpath.

1 Gilbury Pier no public access to the Exbury Estate.

2 Mulberry Dock

This is the site of the old oyster beds created in the 1870s. During the Second World War, an experimental floating dock was built here, together with components for the Mulberry Harbour, used in the D-Day landings. Today, oysters are again being bred on the river, where the water is pure enough for a licence to be granted. No public access.

3 Fiddler's Reach

In the 18th century, this was an anchoring point for the hulls of newly launched ships en route for Portsmouth. The grass that covers the mudflats along the river is called *Spartina Townsendii*. It first appeared on the river in the 1870s to help bind the mud flats, thus reducing erosion. A second variety, *Spartina Anglica*, was introduced in 1898.

4 Gins

This was where the monks of Beaulieu Abbey kept their fishing boats and trading ships. It was a convenient place to load and unload without having to navigate the narrower channel upstream. The name 'Gins' is thought to derive from 'ingenium', a lifting or winding mechanism used to move the load. Today, Gins is home to the Royal Southampton Yacht Club. An oil pipeline from Wytch Farm near Poole to Fawley Oil Refinery passes under the river at this point.

5 Sea Banks

The land behind these banks was reclaimed in the 18th century and used for salt production. Salt was a highly prized commodity and Salt Officers were based in Buckler's Hard to check that the quantity of salt produced tallied with the amount of tax paid. Two hundred years later, the banks remain intact, but they do not hold out the highest tides, and the meadows behind are periodically flooded. This provides waterfowl, particularly Brent geese and wigeon, with feeding areas in autumn and winter.

6 Needs Ore Coastguard Cottages

Built in the 1860s for the Coastguard, who were at the forefront of the fight against smuggling, as well as defence and rescue. Officers were moved around from station to station to prevent them becoming established in the local community and susceptible to bribery and collusion. The Needs Ore Station closed in 1922 but the cottages continue to be occupied by tenants of the estate.

7 Needs Ore Point

This was where Charles Bull created his 'Bull's Run' in 1726–27 as a shortcut into the river from the Solent. It was closed by a Special Act of Parliament in 1986 to protect Gull Island from erosion. Needs Ore is the base of the Beaulieu River Sailing Club whose dinghy races take place in this part of the river. Please note that the Beaulieu River Sailing Club jetty is private and landing is not permitted anywhere at Needs Ore.

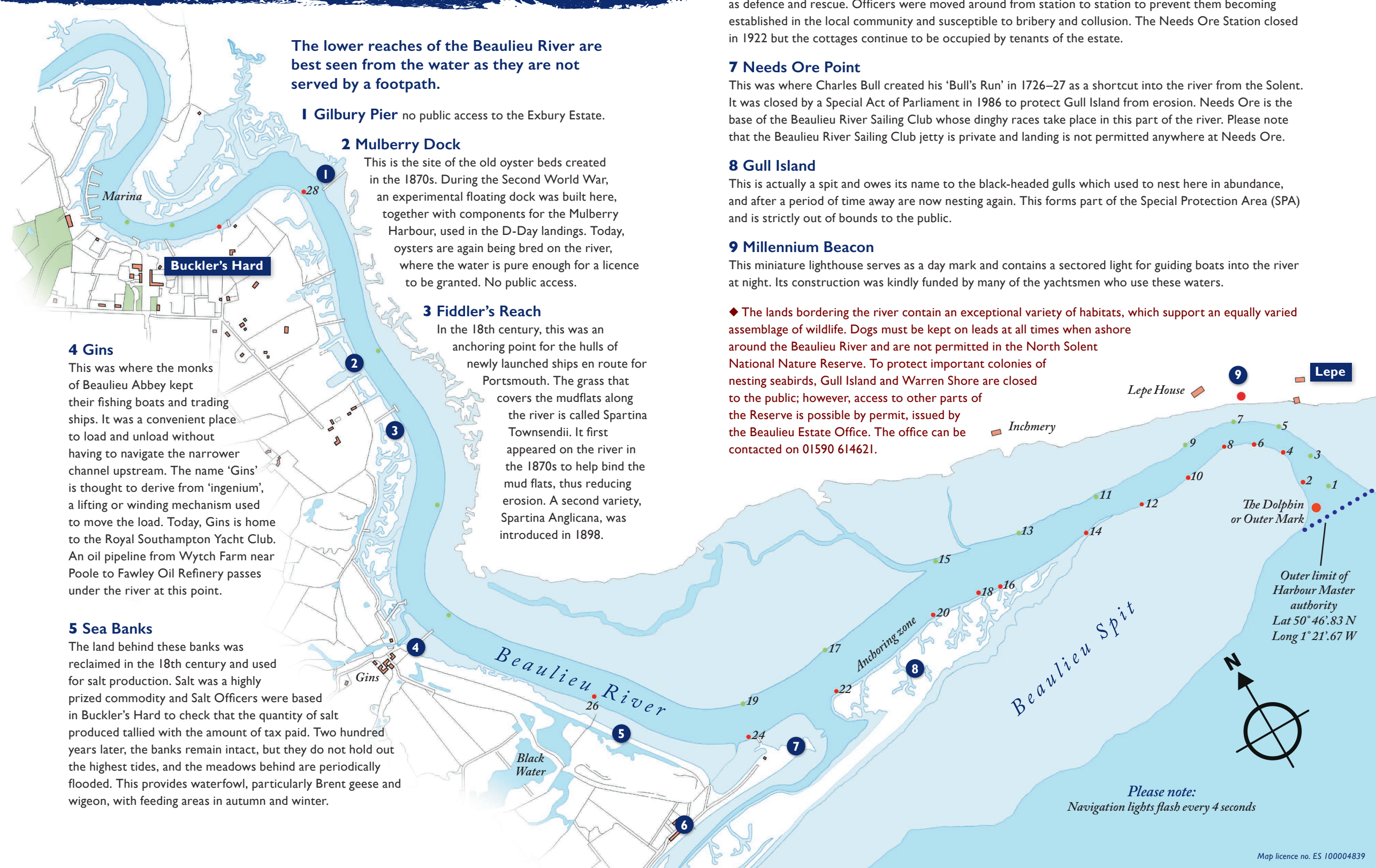
8 Gull Island

This is actually a spit and owes its name to the black-headed gulls which used to nest here in abundance, and after a period of time away are now nesting again. This forms part of the Special Protection Area (SPA) and is strictly out of bounds to the public.

9 Millennium Beacon

This miniature lighthouse serves as a day mark and contains a sectored light for guiding boats into the river at night. Its construction was kindly funded by many of the yachtsmen who use these waters.

◆ The lands bordering the river contain an exceptional variety of habitats, which support an equally varied assemblage of wildlife. Dogs must be kept on leads at all times when ashore around the Beaulieu River and are not permitted in the North Solent National Nature Reserve. To protect important colonies of nesting seabirds, Gull Island and Warren Shore are closed to the public; however, access to other parts of the Reserve is possible by permit, issued by the Beaulieu Estate Office. The office can be contacted on 01590 614621.





Sole appointed Yacht Brokers to the Beaulieu River

Thinking of selling your boat? Please pop in to the BH Boat Sales cabin to discuss. A friendly and professional service awaits.



Buckler's Hard Yacht Harbour,
Beaulieu, Hampshire SO42 7XB

01590 616316

sales@bhboatsales.com



Boat Valeting Services & Management

HULL & SUPERSTRUCTURE
POLISHING
GRP REPAIRS
TEAK RENOVATION
REGULAR WASH DOWN

ANTIFOULING
COPPER COAT APPLICATION
FULL VINYL WRAPS
INTERIOR VALET
COVER CLEAN/REPAIR



078811 07560 | 07780 705289
matt@iboatvalet.co.uk
www.iboatvalet.co.uk



PADDLE SPORTS

The Beaulieu River is a Site of Special Scientific Interest and home to a remarkable variety of wildlife. Due to the protected status of the riverbanks, the slipway at Buckler's Hard is the only place you are permitted to launch or recover canoes, kayaks and paddleboards on the river. Please help us maintain the natural beauty of the river by proceeding with caution and consideration.

For the safety of all our users, we do not permit launching or landing after dark.

Launch & Recover Service Fees

Less than 4 metres	£10 per vessel (includes parking for 1 car)
More than 4 metres	£25 per vessel (includes parking for 1 car)

To book and pay for your launch and car parking, please use the pre-booking system on our website:
beaulieuriver.co.uk/visiting/slipways-launch-fees/

Paddle safely and responsibly by observing these rules

- ⚓ If you are new to paddle sports, we encourage you to take lessons first.
- ⚓ Label your canoe, kayak or paddleboard so if you get separated, rescue teams can reunite you.
- ⚓ Observe navigational rules – keep right and give other users space.
- ⚓ Respect other river users and remember you are not always visible to other vessels.
- ⚓ Keep to the main channel (marked with red and green posts). Do not enter the creeks.
- ⚓ Check local weather forecasts and tidal predictions; tidal currents can be hazardous and the wind can easily blow paddleboards off course. Remember that the upper reaches of the river do dry out and that the ebb tide is stronger.
- ⚓ Wear a correctly-sized buoyancy aid.
- ⚓ Ensure you have a mobile phone or VHF radio.
- ⚓ Bring a whistle in case of emergency.
- ⚓ Do not secure children or dogs to your canoe, kayak or paddleboard.
- ⚓ Only use one paddleboard per person. Don't be tempted to share, particularly with children.
- ⚓ Do not allow dogs to run free along the river bank or foreshore.
- ⚓ Keep your distance from wildlife and keep noise to a minimum.
- ⚓ Do not drink alcohol and paddle.
- ⚓ Take all litter home.
- ⚓ You may off load your car at the slipway, but you must return it to the car park before going afloat.
- ⚓ Do not land on private jetties or along the riverbank.
- ⚓ Landing is strictly prohibited on Gull Island.
- ⚓ A full paddle sports guide is available online.
- ⚓ Parking is available in the Marina only.



2022 PHOTO COMPETITION

Congratulations to Maggie White, the winner for 2021, for this photograph.

We now invite entries for the 2022 competition. This year, we'd like entrants to capture what makes the Beaulieu River special to you. The winning photographer will win a cash prize of £200.

For more information, visit beaulieuriver.co.uk/photo-competition

It's all about belonging.



You're always guaranteed a warm welcome at the Royal Southampton Yacht Club on the Beaulieu River, and becoming a Member couldn't be simpler! If you'd like to know more, pop in for a chat with Lauren and enjoy a drink on us!

**With membership packages available immediately,
a sense of belonging starts here.**

023 8022 3352 • gins@rsyc.org.uk • www.rsyc.org.uk

Gins Clubhouse, St. Leonards, Beaulieu, Hampshire. SO42 7XG



HELP PROTECT OUR WILDLIFE

The Beaulieu River is an important feeding ground and lifeline for birds, with up to 125,000 wildfowl and wading birds visiting the Solent each winter, which is home to 10% of the world's population of dark-bellied Brent geese. When they're disturbed, birds waste energy escaping from the perceived threat and lose valuable feeding or resting time, which may mean they don't survive to migration.

Disturbance often happens accidentally because the birds are so well camouflaged, so please help protect them by being aware of your surroundings. Follow all signs and remember that dogs are not permitted access to the North Solent National Nature Reserve under any circumstances. Landing is only permitted at designated points.

Picture (above) by Richard Holgate, shortlisted for the 2021 photographic competition



Sailing for a wilder Solent

Anchoring

Being out on the water is a great way to connect with nature. But it's important to avoid anchoring in seagrass beds, as these valuable carbon-storing habitats are easily damaged and take a long time to recover.

For more tips on sustainable boating visit:
hiwwt.org.uk/WilderSolent





Run by Yachtsmen for Yachtsmen



ONE STOP SHOP FOR YOUR RIGGING NEEDS
Marine, Industrial, & Architectural

Suppliers of:-

- Standing Rigging – Wire & Rod
- Sheets, Halyards & all Running Rigging
- Dock Lines, Mooring Warps & Anchor Chain
- Shackles, Blocks & Running Hardware
- Winches & Deck Hardware
- Furling & Reefing Systems
- Masts, Booms & Poles in Aluminum & Carbon
- Gas systems & cookers



oceanrigging.co.uk

Lymington Yacht Haven,
King's Saltern Road,
Lymington SO41 3QD

Tel: (01590) 676292

info@oceanrigging.co.uk

 [oceanrigginguk](https://www.facebook.com/oceanrigginguk)

Services:-

- Rig Servicing & Replacement
- Rig Checks & Reports
- Splicing & Rope Work
- Swaging
- Winch & Deck Gear Servicing
- Gas Reports
- Gas Servicing & Repair



MOBILE MARINE ENGINEER

Whether you own a 6ft tender or a 60ft luxury craft, Power or sail,
we can cover most of your mechanical needs.

All makes and models of inboard
and outboard engines

Stern drives

Basic Marine Plumbing

Basic servicing to full rebuilds

Stern gear; propellers, prop
shafts, cutlass bearings.

Replacing skin fittings and
seacocks

Re-powering and maintenance
packages

Installations and Servicing of
marine generators.

Installation of holding tanks and
toilet systems.

If you would just like to discuss the options that are available to you,
Please do not hesitate to contact us.

Call Colin Diffey on **07738 915012**

info@riverbankmarineservices.co.uk

www.riverbankmarineservices.co.uk



Riverbank
Marine Services



NEW FOREST ACTIVITIES

Offering guided canoeing and kayaking tours on the Beaulieu River since 2003,
New Forest Activities is now the largest provider of outdoor activities within the
New Forest National Park.

Having exclusive access to the only privately-owned river in the UK makes their guided paddling
tours truly unrivalled. As well as providing a little fun and adventure, New Forest Activities aim
to educate their customers about the wonders that the Beaulieu River has to offer, including the
varied flora, fauna and wildlife that calls the river home.

“Our aim is, and always has been, to make the outdoors as accessible as possible to people,
particularly when it comes to paddling”, says Sam Sutton, Director at New Forest Activities.
“We started New Forest Activities with that ethos in mind and it still runs true to this day.”

Couples, groups, and families with children as little as 18 months can choose from a range of
canoeing and kayaking tours, or hire a kayak and head out and explore on your own.

“Much like when you visit a city abroad, it’s always a bonus when you know someone with some
local knowledge, and when it comes to the Beaulieu River, it’s no different”, says Sam. “Our
instructors will take you to the very best beauty spots the river has to offer whilst educating you
all about the river’s rich and vibrant history along the way.”

So, if you’re visiting Beaulieu for the day, or you’re looking to drop
anchor at Buckler’s Hard and get a little closer to the water for
an afternoon, a guided canoeing and kayaking tour with New
Forest Activities is a great place to start.

Book a wide range of land and water-based activities suitable
for all ages at newforestactivities.co.uk or call the team on
01590 612377 to find out more. Open all year round.





Your Yacht...Our Care...



OUR PRODUCTS AND SERVICES

- Yacht Management • Polishing and Waxing • Antifouling
- Regular Exterior Cleaning • Stern Gear Refurbishment
- Teak Restoration • Teak Renovation
- Acid Clean of Waterline • Anode Replacement
- For Sale Preparation • Dehumidifier and Heater Loan
- General Maintenance



AGlaze Approved Applicators



enquiries@solentyachtcare.co.uk • solentyachtcare.co.uk
T: 01590 719587 • M: 07917 543877



LYMINGTON
HARBOUR

ONLY A STEP AWAY...

Beautiful Georgian Town
New Forest Activities
Fantastic Dining Experiences
Things To See & Do



CHARMING HARBOUR WITH FIRST CLASS MOORING FACILITIES

"We spent a few very pleasant days moored at the Town Quay which has an excellent ambiance... we like the new berthing arrangements; with finger berths, power and water all close to the Town Centre it makes Lymington a very nice place to visit."

LET'S GET SOCIAL



Find out more:
WWW.LYMINGTONHARBOUR.CO.UK
INFO@LYMINGTONHARBOUR.CO.UK
01590 672014



MARINETEC Ltd

**Professional and Quality Marine
Engineering Services based at
Bucklers Hard Yacht Harbour**



**Inboard & Outboard Engine
Service & Repair**

Engine Diagnostics

New Engines Supplied & Fitted

General Boat Systems

**Authorised Dealer for
Sole Diesel & Hyundai Seasall**

07717 155871

info@marine-tec.co.uk

www.marine-tec.co.uk

**Bucklers Hard Yacht Harbour,
Beaulieu, Hampshire, SO42 7XB**

